

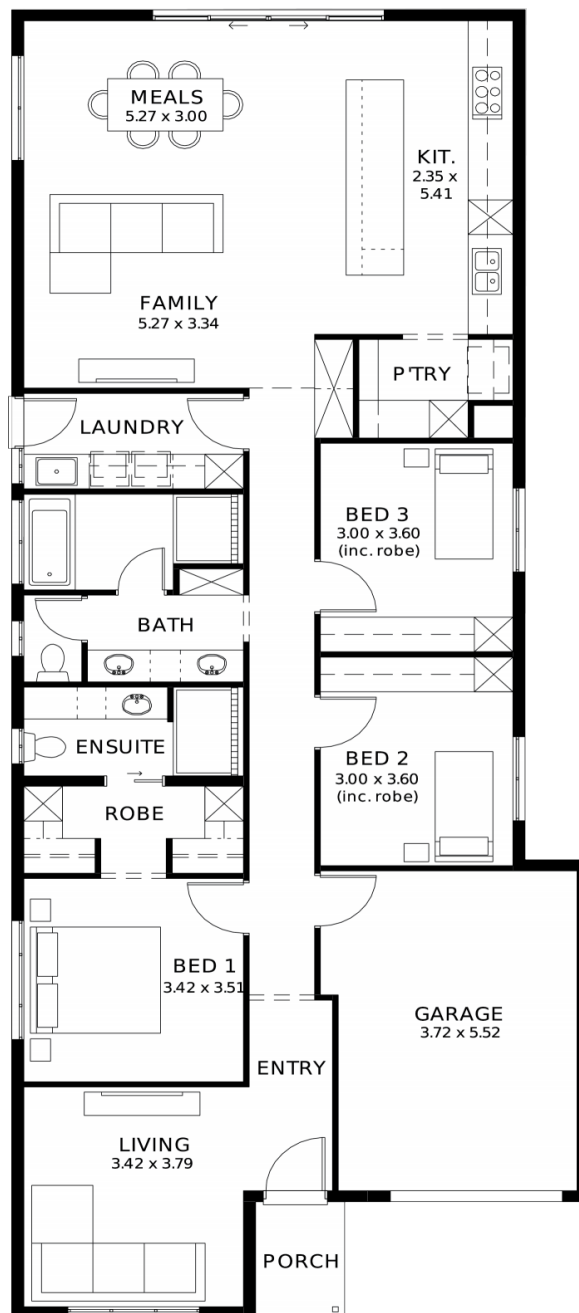
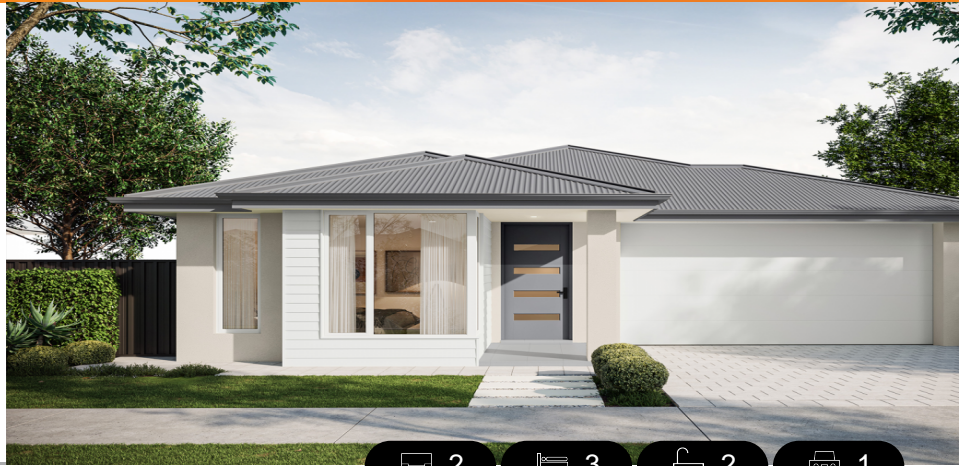
Gossamer 3.5 (V1.2)

House and Land from

\$689,800*

LOT 8056
CASSOWARY WAY,
MUNNO PARA
'PLAYFORD ALIVE'

Lot Size: 300.00m²
House Size: 180.84m² / 19.47sqgs
Width: 9.00m (incl. garage)
Elevation: Horizon 02 TIMELESS 12.5m



**STATESMAN
HOMES**

08 8366 0080
statesman-homes.com.au

Rick Chen M 0434 619 975
rickc@statesman-homes.com.au

* Terms and Condition's apply. For full details go to statesman-homes.com.au/terms-and-conditions/

These exceptional features are just the beginning

Footings and site works

6.6kW solar system included

External driveway and pathway with pavers,
and stormwater disposal

2.7m ceiling throughout / 25-degree roof
pitch / 450mm eaves

2.3m high doors (external and Internal)

Insulation throughout including R6.0 to
ceiling

900mm Westinghouse appliances to kitchen
including dishwasher

Full height tiling to bathrooms

Solid surface benchtop to kitchen and pantry

Double power points throughout

Built-in robes with a mirror slider, drawers
and shelving sets

Full height tiling to bathroom and en-suite

Tiled ledge to showers with 1.95m high Milan
semi-framed shower screens

45 litre inset trough to laundry with floor units
and tiling behind

400mm deep overhead cupboards to kitchen
and laundry

Auto single span panel to garage

Premium facade as selected or your choice,
including slab and tiles

Slab and tiles to alfresco as per plan

Flooring included (carpets to rooms / timber
laminates to living, kitchen)

Ducted reverse cycle air-conditioning with
Wi-Fi control

Fast pre-construction process

3-month maintenance

25 Year Structural Guarantee

STATESMAN
HOMES

08 8366 0080
statesman-homes.com.au

Rick Chen M 0434 619 975
rickc@statesman-homes.com.au