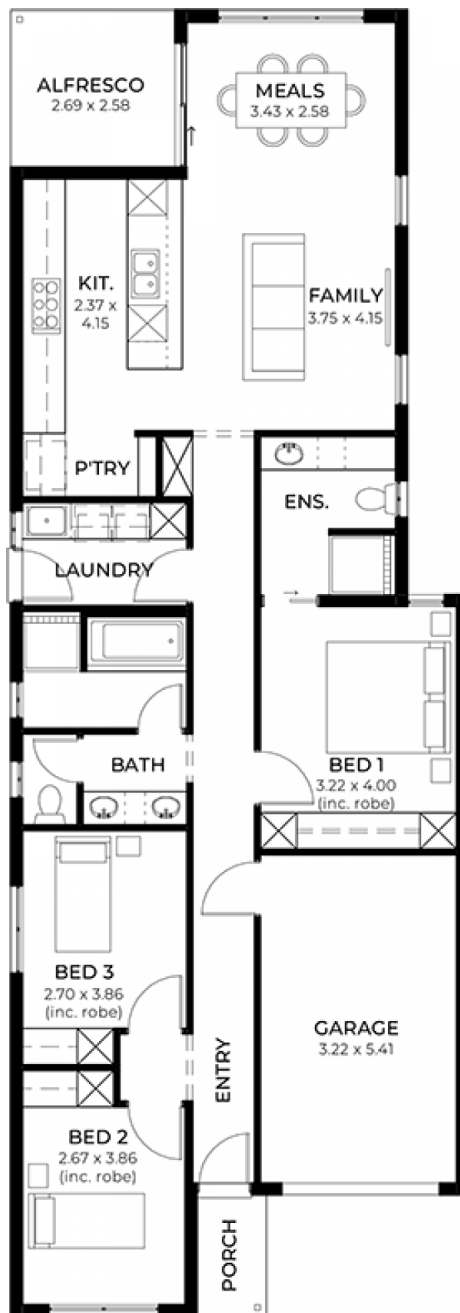


Celeste 3.5 (V1.3)

House and Land from
\$597,300*

LOT 8083
CASSOWARY WAY,
MUNNO PARA
'PLAYFORD ALIVE'

Lot Size: 255.00m²
House Size: 145.01m² / 15.60sqs
Width: 7.50m (incl. garage)
Elevation: Horizon 05 MODERN 12.5m



**STATESMAN
HOMES**

08 8366 0080
statesman-homes.com.au

Joanne Kountourogianis M 0432 041
joanneko@statesman-homes.com.au

* Terms and Condition's apply. For full details go to statesman-homes.com.au/terms-and-conditions/

These exceptional features are just the beginning

FREE FENCING

FREE FRONT LANDSCAPING

FREE LETTERBOX

FREE DRIVEWAY CROSSOVER

FREE \$250 HOT WATER REBATE

Upgraded facade

Driveway and perimeter paving

Stormwater

Footings included

Garage with remote control units to panel lift door

2700mm ceilings with high doors

Ensuite to Bed 1

Full height tiling to bathrooms

900mm cooktop, oven and rangehood

Full height tiling to bathroom and en-suite

Stone benchtop to kitchen

6.6kW Solar

Built-in robes to Bedrooms

Plenty of built-in storage

Carpet to Bedrooms

Timber flooring to remainder

Tiled wet areas

Ducted and zoned reverse cycle AC

Colorbond facias and gutters

Overhead cupboards to kitchen

Instantaneous gas hot water

Keylocks to windows

Smoke detectors

Not open to investors

STATESMAN
HOMES

08 8366 0080
statesman-homes.com.au

Joanne Kountourogiannis M 0432 041
joanneko@statesman-homes.com.au