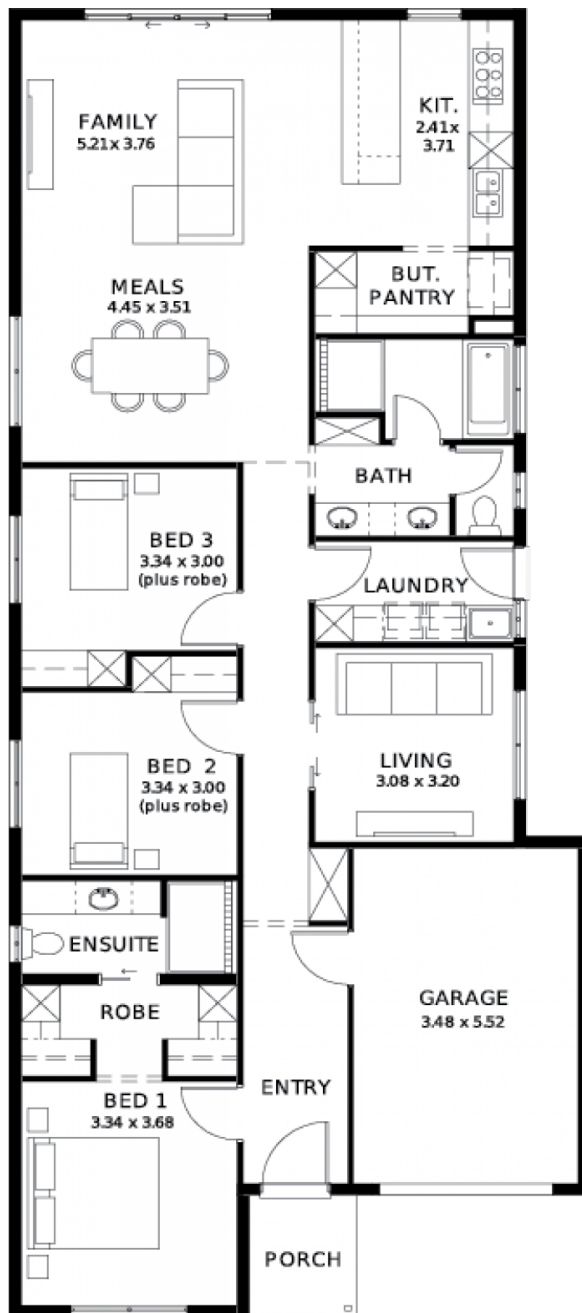
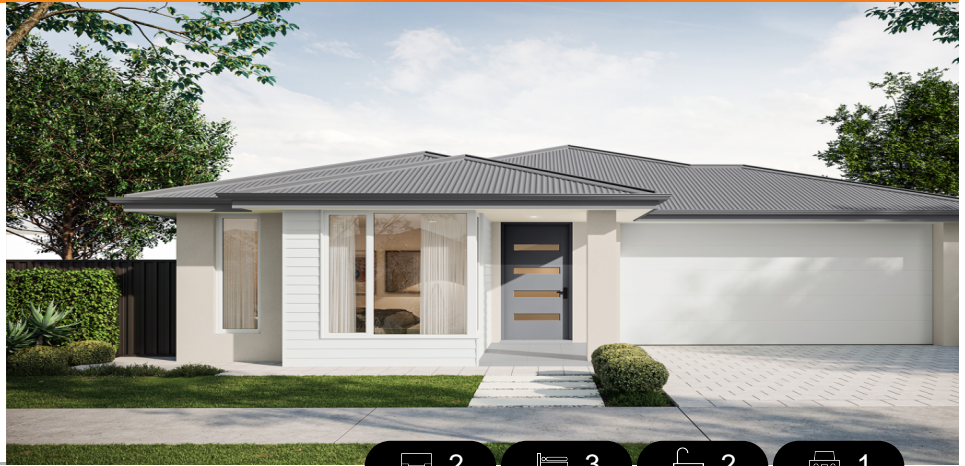


LOT 254
BOISE CRESCENT,
MOUNT BARKER
'CLOVER WOOD'

Lot Size: 300.00m²
House Size: 172.68m² / 18.59sqs
Width: 9.00m (incl. garage)
Elevation: Horizon 02 TIMELESS 12.5m



These exceptional features are just the beginning

30 weeks build time guarantee

Perimeter and driveway paving included (up to 7.0m setback) with stormwater disposal

Energy & Climate Efficiency 6.6kW solar power system

2.7m ceiling throughout / 25-degree roof pitch / 450mm eaves

Garage with remote control units to panel lift door

Ducted reverse cycle air conditioning - Complete home climate control with Wi-Fi connectivity

900mm Westinghouse appliances to kitchen, with a Westinghouse dishwasher

Designer tape ware and sanitary ware

Full height tiling to bathroom and en-suite

Shower Ledges and soft closing joineries

Full height tiling to en-suite and bathroom

Flooring included, with carpets to rooms and timber laminate to living and kitchen

Built-in robes with mirror finish, drawers and shelving set

Stylish interior finishes

Choice of premium facades

3-month maintenance

25 Year Structural Guarantee

STATESMAN
HOMES

08 8366 0080
statesman-homes.com.au

Vinny Bhatti M 0432 862 197
vinnyb@hickinbotham.com.au