

# Celeste 3.5 (V1.3)

House and Land from

**\$597,300\***

LOT 9001  
LIGHT AVENUE,  
MUNNO PARA  
'PLAYFORD ALIVE'

Lot Size: 255.00m<sup>2</sup>  
House Size: 145.01m<sup>2</sup> / 15.60sqs  
Width: 7.50m (incl. garage)  
Elevation: Horizon 06 MODERN 12.5m



1



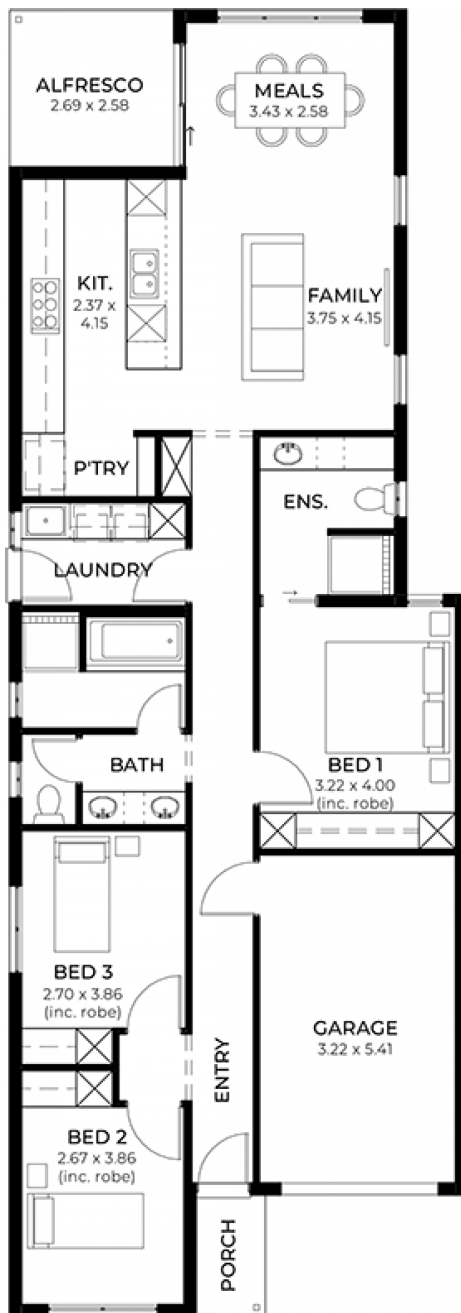
3



2



1



**STATESMAN  
HOMES**

08 8366 0080  
statesman-homes.com.au

Leigh Raison M 0497 704 675  
leighr@hickinbotham.com.au

\* Terms and Condition's apply. For full details go to [statesman-homes.com.au/terms-and-conditions/](https://statesman-homes.com.au/terms-and-conditions/)

# These exceptional features are just the beginning

Available to first home buyers only\*\*

Ducted reverse cycle air-conditioning with Wi-Fi control

6.6 kW solar system included

2.7m raised ceiling throughout

2.34m raised doors throughout

Flooring included (carpets to rooms, timber laminate to living)

Perimeter paving, driveway paving and storm water included

Generous double power points throughout

Designer range front door and handles

Nest doorbell/camera

Fully finished and tiled alfresco and porch

Ceiling fan provision to alfresco

External gas point to alfresco

Downlight to porch

3 outdoor water points (1 in the front, 2 in the back)

Floor-to-ceiling tiling to bathroom and ensuite

Stainless steel grates to showers

Zenith surface benchtop to kitchen and pantry

900mm Westinghouse appliances to kitchen including dishwasher

Overhead kitchen cupboards

Plumbed water point for fridge

Undermount sink

Pull out sink mixer tap

Full shelving and cabinetry to pantry

Full cabinetry to laundry including overhead cupboards

Pull out laundry bin

Power point in broom closet

Built-in robes with mirror finish, drawers and shelving set

Cavity sliding doors to theatre

30 weeks build time guarantee

3-month maintenance

25 year structural guarantee

**STATESMAN**  
**HOMES**

08 8366 0080  
statesman-homes.com.au

Leigh Raison M 0497 704 675  
leighr@hickinbotham.com.au