

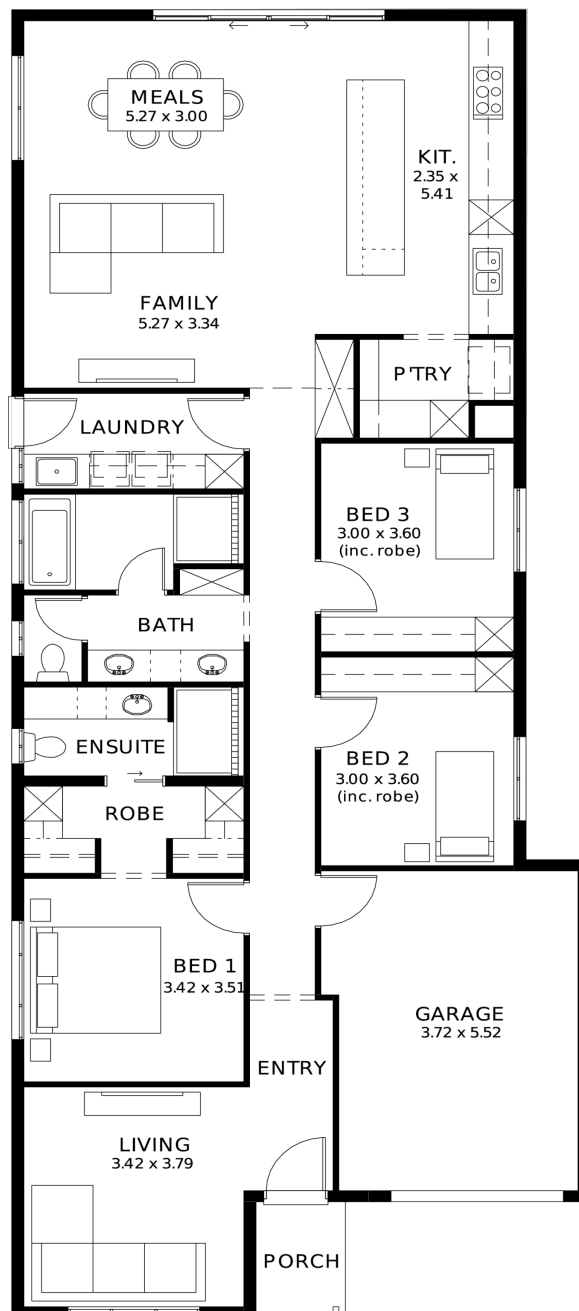
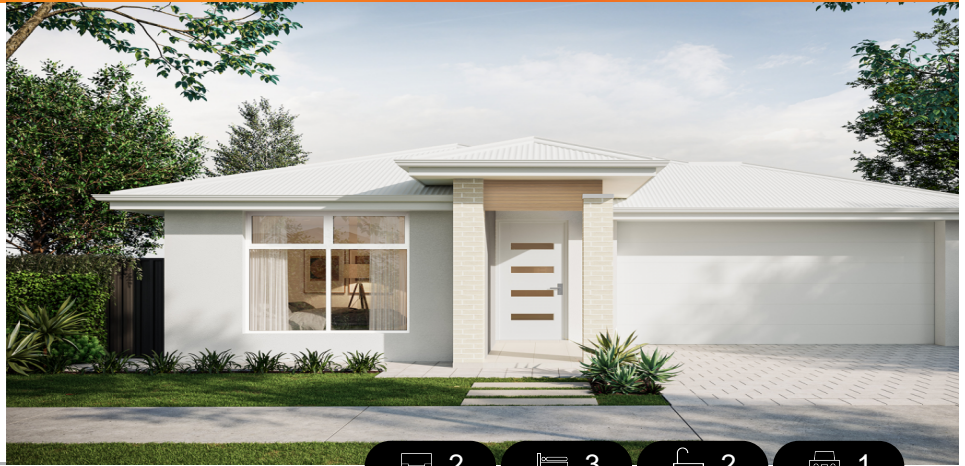
Gossamer 3.5 (V1.2)

House and Land from

\$694,900*

LOT 8056
CASSOWARY WAY,
MUNNO PARA
'PLAYFORD ALIVE'

Lot Size: 300.00m²
House Size: 180.84m² / 19.47sqgs
Width: 9.00m (incl. garage)
Elevation: Horizon 04 HARMONY 12.5m



**STATESMAN
HOMES**

08 8366 0080
statesman-homes.com.au

Matt Tortorella M 0414 840 067
mattt@hickinbotham.com.au

These exceptional features are just the beginning

30 week build guarantee for peace of mind

Choice of premium facades to suit your personal style

Thoughtfully designed, well-planned floorplan for modern living

2.7m high ceilings enhancing space and natural light

Entertainer-style kitchen with quality finishes, perfect for hosting

Full height tiling to bathroom and en-suite

Full-height tiling to ceiling in bathroom and ensuite

Ducted reverse cycle air conditioning with Wi-Fi controller

6.6kW solar package

Interior colour selections by some of Adelaide's leading designers

Driveway paving, stormwater connection, and termite protection included

STATESMAN
HOMES

08 8366 0080
statesman-homes.com.au

Matt Tortorella M 0414 840 067
mattt@hickinbotham.com.au