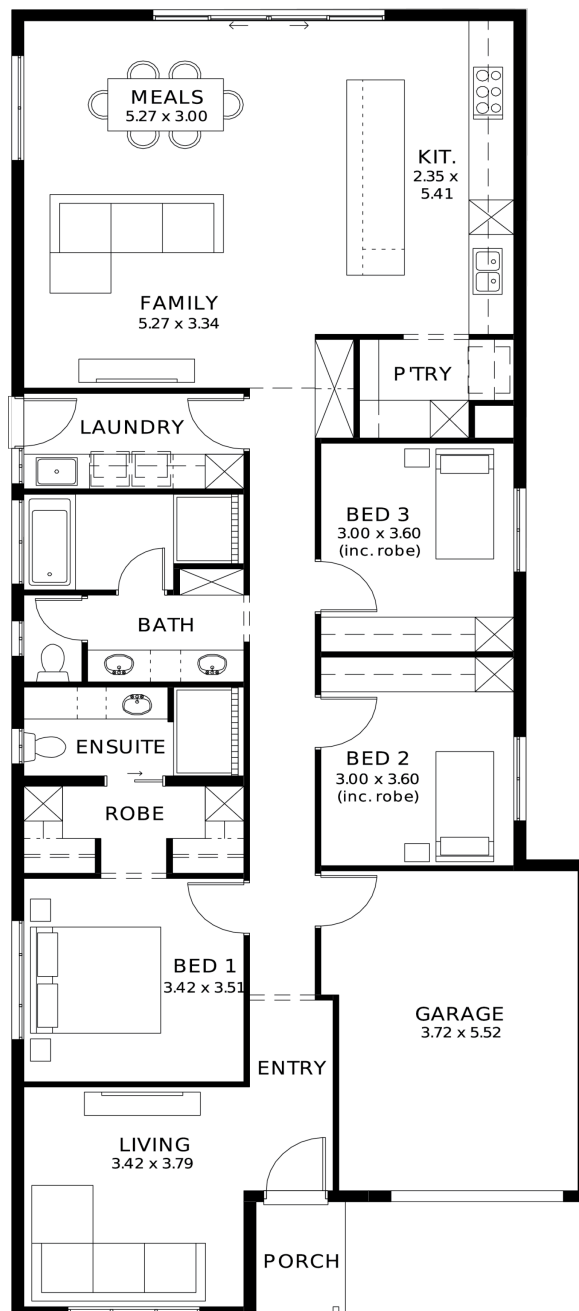
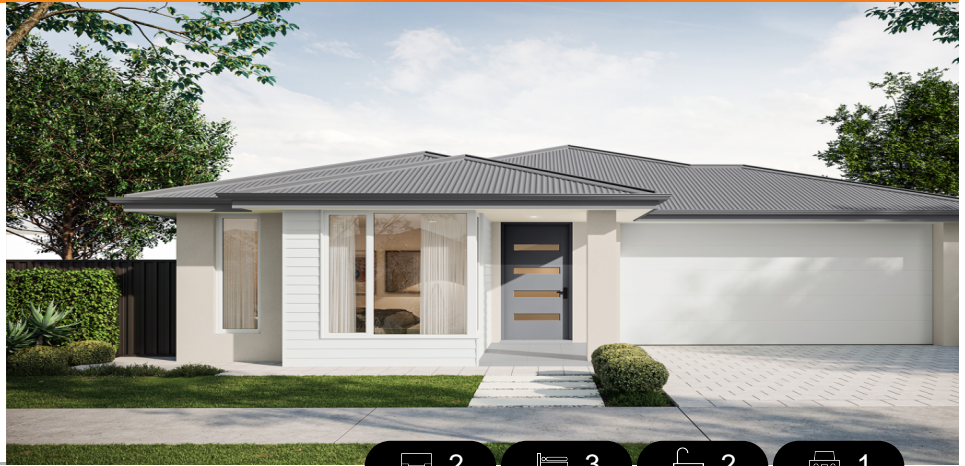


Gossamer 3.5 (V1.2)

House and Land from
\$763,800*

LOT 1257
FRANGIPANI CRESCENT,
ANDREWS FARM
'BROOKMONT'

Lot Size: 300.00m²
House Size: 180.84m² / 19.47sqgs
Width: 9.00m (incl. garage)
Elevation: Horizon 02 TIMELESS 12.5m



**STATESMAN
HOMES**

08 8366 0080
statesman-homes.com.au

Dinesh Koggala M 0422 245 894
dineshk@hickinbotham.com.au

* Terms and Condition's apply. For full details go to statesman-homes.com.au/terms-and-conditions/

These exceptional features are just the beginning

Modern design, unbeatable location

A smart move for first home buyers or
Investors!

30 week build time guarantee

Upgraded facade

Garage with remote control units to panel lift
door

2700mm ceilings with high doors

Ensuite to Bed 1

900mm cooktop, oven and rangehood

Stone benchtop to kitchen

6.6kW Solar

Built in robes to Bedrooms

Plenty of built in storage

Full height tiling to bathroom and en-suite

Carpet to Bedrooms

Timber flooring to remainder

Tiled wet areas

Ducted and zoned reverse cycle AC

Colorbond facias and gutters

Overhead cupboards to kitchen

Instantaneous gas hot water

Footing price and encumbrance
requirements included

Driveway, perimeter path & stormwater
system included

3-month maintenance period + 25 year
structural warranty

This is more than a house - itâ€™s your
next chapter

Letâ€™s talk today!?

STATESMAN
HOMES

08 8366 0080
statesman-homes.com.au

Dinesh Koggala M 0422 245 894
dineshk@hickinbotham.com.au