

Gossamer 3.5 (V1.2)

House and Land from

\$764,900*

LOT 2004
FRANGIPANI CRESCENT,
ANDREWS FARM
'BROOKMONT'

Lot Size: 300.00m²
House Size 180.84m² / 19.47sqgs
Width 9.00m (incl. garage)
Elevation: Horizon 06 MODERN 12.5m



2



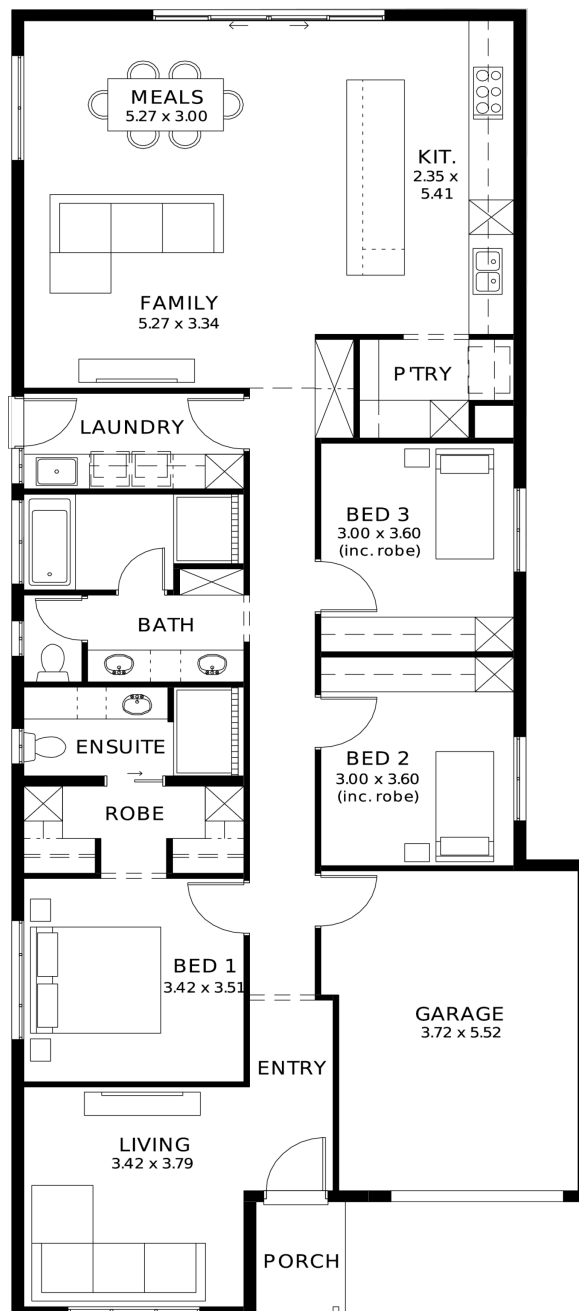
3



2



1



**STATESMAN
HOMES**

08 8366 0080
statesman-homes.com.au

Leigh Raison M 0497 704 675
leighr@hickinbotham.com.au

* Terms and Condition's apply. For full details go to statesman-homes.com.au/terms-and-conditions/

These exceptional features are just the beginning

Ducted reverse cycle air-conditioning with Wi-Fi control

6.6kW solar system included

2.7m raised ceiling throughout

2.34m raised doors throughout

Flooring included (carpets to rooms, timber laminate to living)

Perimeter paving, driveway paving and storm water included

Generous double power points throughout

Designer range front door and handles

Nest doorbell/camera

Downlight to porch

3 outdoor water points (1 in the front, 2 in the back)

Floor-to-ceiling tiling to bathroom and ensuite

Shower ledges and soft closing joineries

Stainless steel grates to showers

Zenith surface benchtop to kitchen and pantry

900mm Westinghouse appliances to kitchen including dishwasher

Overhead kitchen cupboards

Plumbed water point for fridge

Undermount sink

Pull-out sink mixer tap

Full shelving and cabinetry to pantry

Full cabinetry to laundry including overhead cupboards

Pull-out laundry bin

Power point in broom closet

Built-in robes with mirror finish, drawers and shelving set

Fixed price footings

30 weeks build time guarantee

3 Month Maintenance

25 Year Structural Guarantee

STATESMAN
HOMES

08 8366 0080
statesman-homes.com.au

Leigh Raison M 0497 704 675
leighr@hickinbotham.com.au