

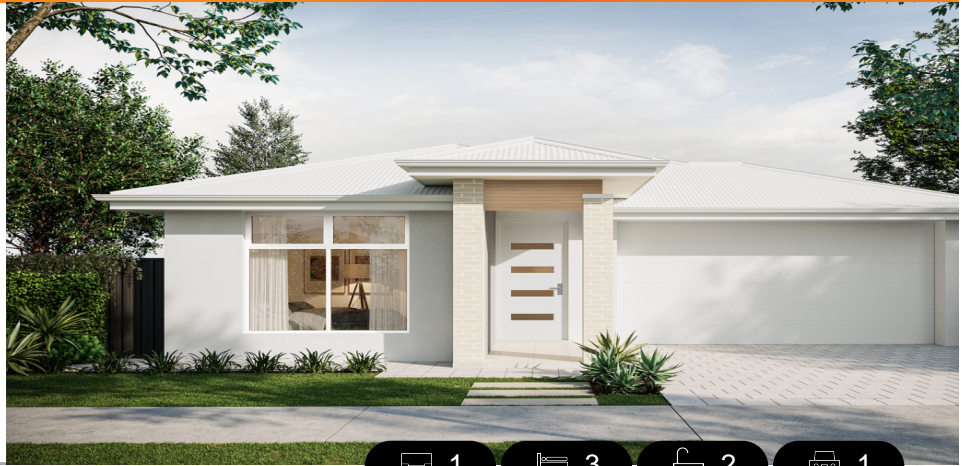
# Celeste 3.5 (V1.3)

House and Land from

**\$597,300\***

LOT 8167  
KOALA LANE,  
MUNNO PARA  
'PLAYFORD ALIVE'

Lot Size: 255.00m<sup>2</sup>  
House Size: 145.01m<sup>2</sup> / 15.60sqs  
Width: 7.50m (incl. garage)  
Elevation: Horizon 04 HARMONY 12.5m



1



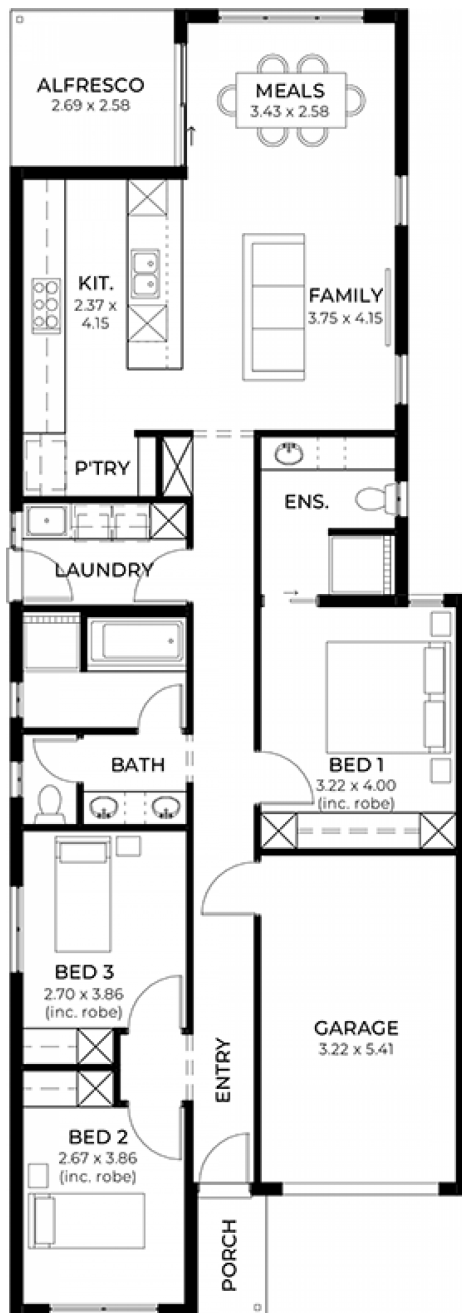
3



2



1



**STATESMAN  
HOMES**

08 8366 0080  
statesman-homes.com.au

Matt Tortorella M 0414 840 067  
mattt@hickinbotham.com.au

\* Terms and Condition's apply. For full details go to [statesman-homes.com.au/terms-and-conditions/](https://statesman-homes.com.au/terms-and-conditions/)

# These exceptional features are just the beginning

30 week build guarantee for peace of mind

Choice of premium facades to suit your personal style

Thoughtfully designed, well-planned floorplan for modern living

2.7m high ceilings enhancing space and natural light

Entertainer-style kitchen with quality finishes, perfect for hosting

Full height tiling to bathroom and en-suite

Full-height tiling to ceiling in bathroom and ensuite

Ducted reverse cycle air conditioning with Wi-Fi controller

6.6kW solar package

Interior colour selections by some of Adelaide's leading designers

Driveway paving, stormwater connection, and termite protection included

---

**STATESMAN**  
HOMES

08 8366 0080  
statesman-homes.com.au

Matt Tortorella M 0414 840 067  
mattt@hickinbotham.com.au