

Umbra5.0 (V1.2)

House and Land from

\$740,500*

LOT 1022
NEW ROAD ,
MALLALA
'GRACEWOOD'

Lot Size: 450.00m²
House Size: 210.77m² / 22.69sqs
Width: 11.50m (incl. garage)
Elevation: Horizon 02 TRANQUIL 12.5m



2



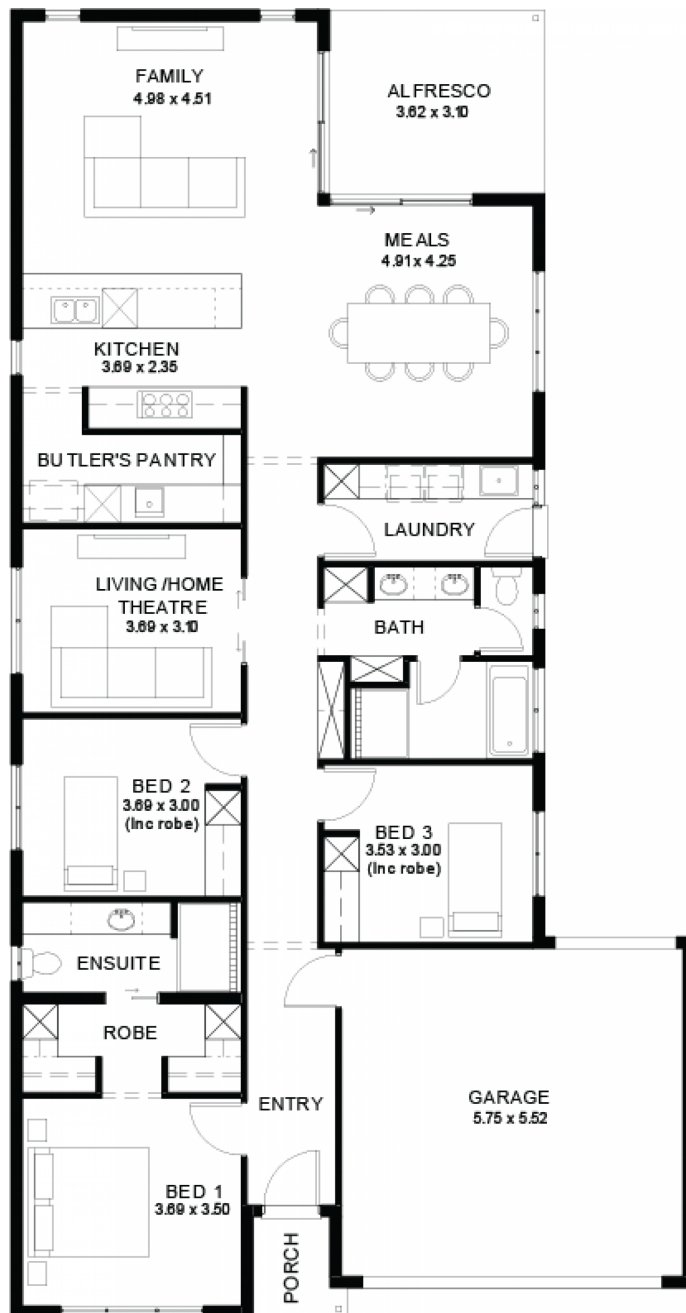
3



2



2



**STATESMAN
HOMES**

08 8366 0080
statesman-homes.com.au

Dallas Chivers M 0405 808 434
dallasc@statesman-homes.com.au

* Terms and Condition's apply. For full details go to statesman-homes.com.au/terms-and-conditions/

These exceptional features are just the beginning

Gracewood Estate Mallala

Phone to book an Appointment

Genuine ALL INCLUSIVE pricing

5-Month Build Time (from foundation pour) -
fast & efficient

Transparent & Comprehensive - no
surprises, no hidden costs

Stress-Free Building Experience -
streamlined from start to finish

Thoughtfully Designed Home - created to
enhance everyday living

Choice of Premium Facades - elevate your
street appeal

Upgrade Option to Aspire Inclusions -
premium luxury at your fingertips

Hebel AAC External Walls - enhanced
energy efficiency & acoustic comfort

Full height tiling to bathroom and en-suite

Colorbond Roofing & 6.6kW Solar System -
long-lasting and sustainable

Comprehensive Insulation - superior
year-round climate control

Gourmet Kitchen - solid surface benchtops,
soft-close cabinetry & premium appliances

Luxury Bathroom & Laundry - elegant
fixtures & smart storage solutions

Stylish Interior Finishes - high ceilings
(2340mm), modern detailing

Advanced Electrical Inclusions - Ring
doorbell, Wi-Fi controlled air conditioning &
more

Turnkey Finish - includes perimeter &
driveway paving, stormwater & termite
protection

Footings & Site Works Included

Price Valid for 14 Days - secure your
package today

Phone and Appointment to bring your new
home to life

STATESMAN
H O M E S

08 8366 0080
statesman-homes.com.au

Dallas Chivers M 0405 808 434
dallasc@statesman-homes.com.au