

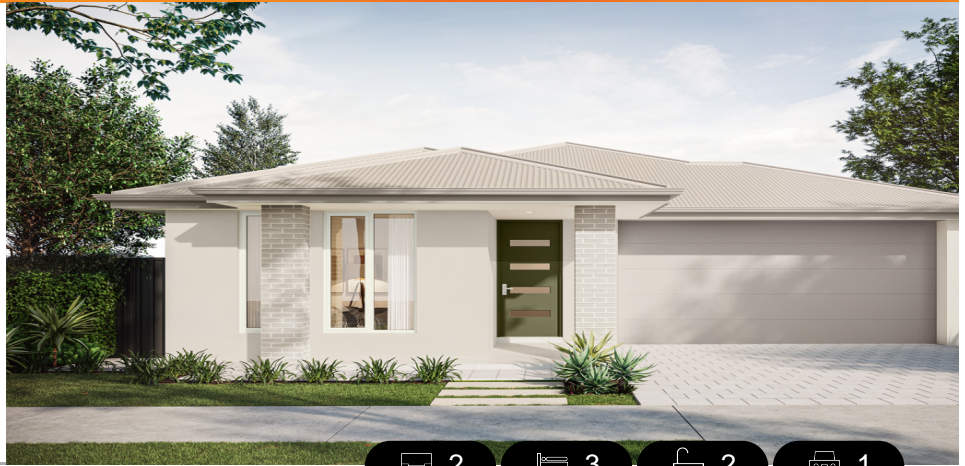
# Gossamer 3.5 (V1.2)

House and Land from

**\$676,500\***

LOT 8186  
CASSOWARY WAY,  
MUNNO PARA  
'PLAYFORD ALIVE'

Lot Size: 300.00m<sup>2</sup>  
House Size: 180.84m<sup>2</sup> / 19.47sqgs  
Width: 9.00m (incl. garage)  
Elevation: Horizon 06 SERENE 12.5m



2



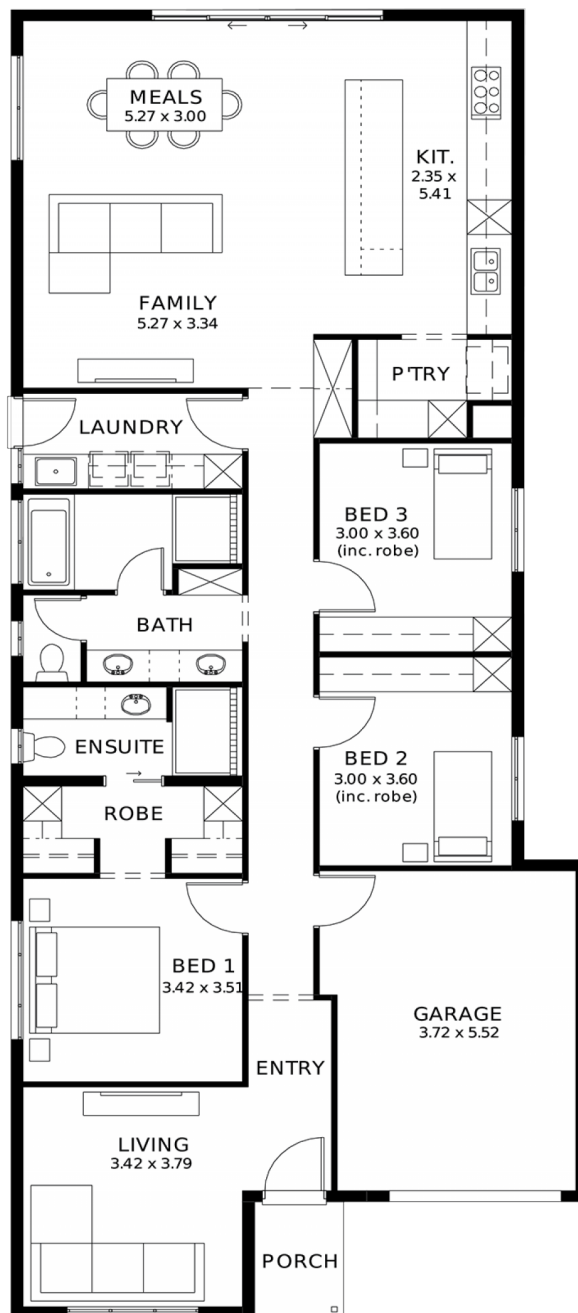
3



2



1



**STATESMAN  
HOMES**

08 8366 0080  
statesman-homes.com.au

Roshan Kulatunga M 0415 544 058  
roshank@statesman-homes.com.au

\* Terms and Condition's apply. For full details go to [statesman-homes.com.au/terms-and-conditions/](https://statesman-homes.com.au/terms-and-conditions/)

# These exceptional features are just the beginning

Experience luxury, comfort, and efficiency with our premium inclusions, all part of your new home

Energy & climate efficiency 6.6kW solar power system

Eco-friendly and energy efficient as standard ducted reverse cycle air conditioning

Complete home climate control with Wi-Fi connectivity, stylish interior finishes, and lifestyle carpet

Highly sought after floor-to-ceiling tiles in bathrooms already included!

Plush carpeting to all bedrooms, study, and theatre timber laminate flooring

Sleek and durable finishes to entry, rear hallway, kitchen, meals, and family areas

High ceilings (2700mm)

Enhancing space and luxury throughout the home. Comfort & insulation comprehensive insulation package

Full height tiling to bathroom and en-suite

R6.0 to ceilings, R2.5 to external walls, R2.0 to internal walls and garage for year-round comfort

Gourmet kitchen premium 900mm Westinghouse appliances - Including oven, cooktop, rangehood, and dishwasher

20mm solid surface benchtops

Sleek and durable surfaces in kitchen and pantry

Designer bathrooms luxury inclusions - featuring square-edge benchtops, semi-framed shower screens, and Luna tapware and accessories

Built-in storage solutions ample Storage throughout - including walk-in robes, mirrored sliding robes, linen cupboards, pantry, and dedicated laundry storage

Outdoor living enhancements entertainers alfresco (as per the floor plan) - includes slab, tiling, gas point for your BBQ

Encumbrance Requirements - All applicable encumbrance criteria included for hassle-free approvals

---

**STATESMAN**  
HOMES

08 8366 0080  
statesman-homes.com.au

Roshan Kulatunga M 0415 544 058  
roshank@statesman-homes.com.au