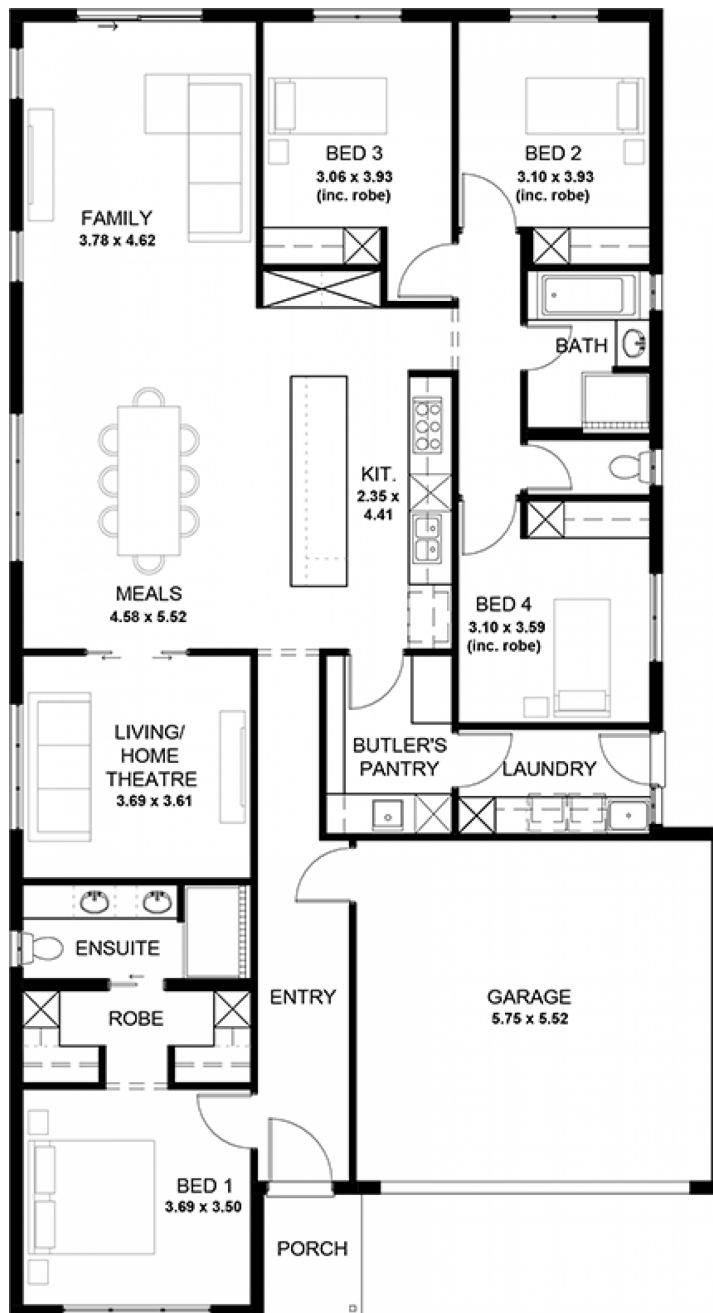
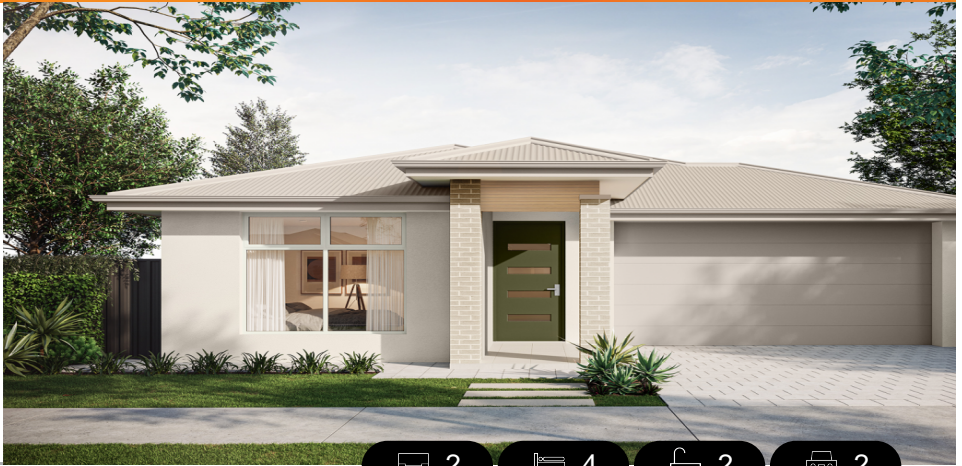


# Zephyr 3.5 (V1.3)

House and Land from  
**\$758,400\***

LOT 8060  
CASSOWARY WAY,  
MUNNO PARA  
'PLAYFORD ALIVE'

Lot Size: 375.00m<sup>2</sup>  
House Size: 217.88m<sup>2</sup> / 23.45sqs  
Width: 11.50m (incl. garage)  
Elevation: Horizon 04 SERENE 12.5m



**STATESMAN  
HOMES**

08 8366 0080  
statesman-homes.com.au

Joanne Kountourogianis M 0432 041  
joanneko@statesman-homes.com.au

# These exceptional features are just the beginning

Land titled August 2027

This will sell fast!!

Free fencing

Free front landscaping

Free letterbox

Free driveway crossover

Upgraded facade

Driveway and perimeter paving

Stormwater

Footings included

Garage with remote control units to panel lift door

2700mm ceilings with high doors

Ensuite to master bedroom

Full height tiling to bathroom and en-suite

Full height tiling to bathrooms

900mm cooktop and oven

Zenith stone benchtop to kitchen

6.6kW Solar

Built in robes to bedrooms 2,3 and 4

Plenty of built in storage

Carpet in bedrooms and timber flooring in remaining spaces

Tiled wet areas

Ducted and zoned reverse cycle AC

Colorbond facias and gutters

Overhead cupboards to kitchen

Keylocks to windows

Smoke detectors

---

**STATESMAN**  
HOMES

08 8366 0080  
statesman-homes.com.au

Joanne Kountourogianis M 0432 041  
joanneko@statesman-homes.com.au