

Meridian 3.5 (V1.0)

House and Land from
\$912,900*

LOT 226
POLO DRIVE,
MOUNT BARKER
'MINTERS RISE'

Lot Size: 989.00m²
House Size 255.71m² / 27.52sqgs
Width 15.00m (incl. garage)
Elevation: Horizon 02 CLASSIC 16m

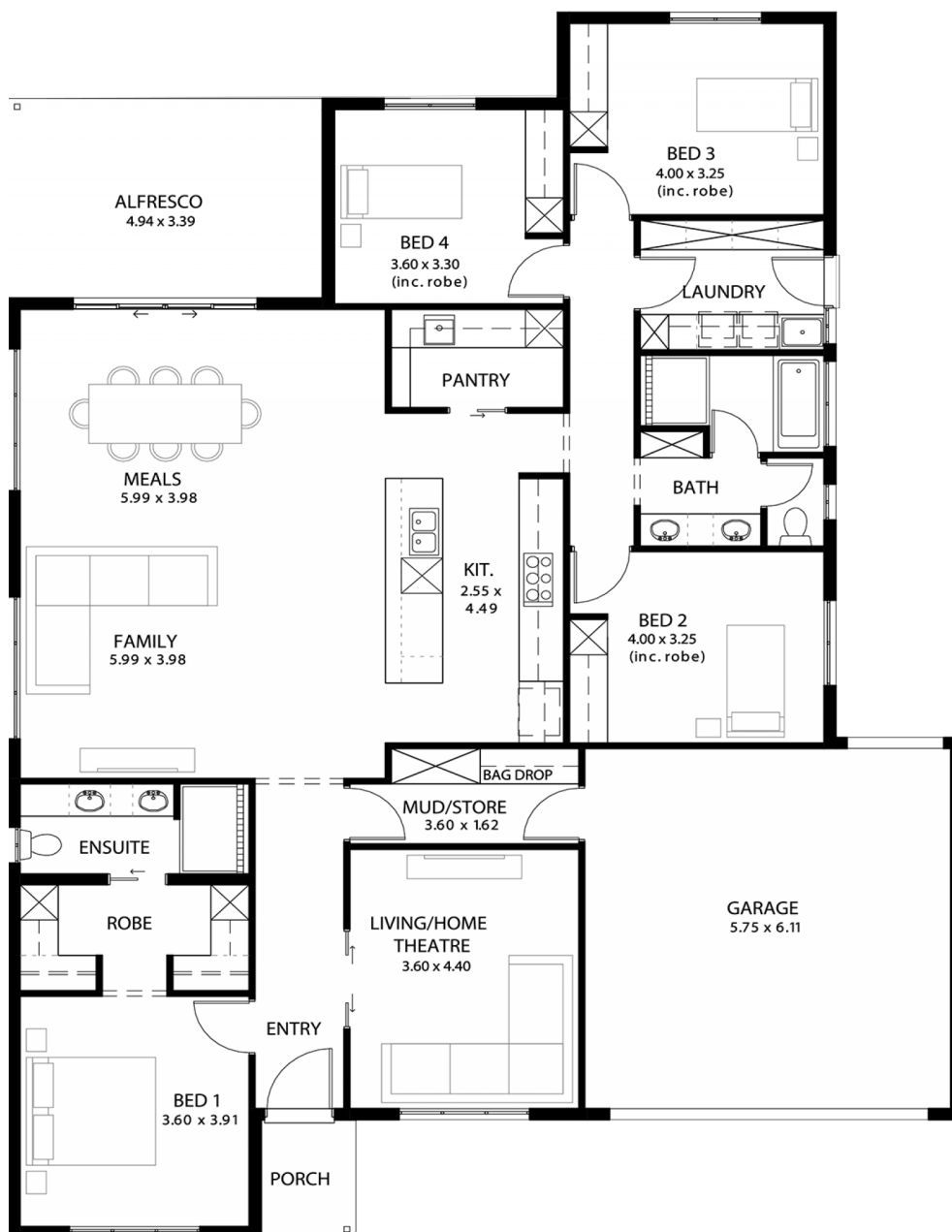


2

4

2

2



**STATESMAN
HOMES**

08 8366 0080
statesman-homes.com.au

Rick Chen M 0434 619 975
rickc@statesman-homes.com.au

* Terms and Condition's apply. For full details go to statesman-homes.com.au/terms-and-conditions/

These exceptional features are just the beginning

Ready to build October 2026

Footings and site works included

6.6 kw solar system

External driveway and pathway with pavers
and stormwater

2.7m ceiling throughout with 25-degree roof
pitch

2.3m high doors (external and internal)

Insulation throughout including R6.0 to
ceiling

Stainless steel dishwasher and 900mm
Westinghouse appliances included in kitchen

Full height tiling to bathrooms

Zenith surface benchtop to kitchen and
pantry

Double power points throughout

Full height tiling to bathroom and en-suite

Built-in robes with a mirror slider, drawers
and shelving sets

Tiled ledge to showers with 2000mm high
Milan Semi-Framed Shower Screens

45 litre inset trough to laundry

400mm deep overhead cupboards to Kitchen
and Laundry

Premium facade as selected or your choice,
including slab and tiles

Slab and tiles to alfresco as per plan

Flooring included (Carpets to rooms/Timber
laminare to living, kitchen)

Ducted reverse cycle air-conditioning with
WIFI control

Fast pre-construction process

3 Month Maintenance

25 Year Structural Guarantee

STATESMAN
HOMES

08 8366 0080
statesman-homes.com.au

Rick Chen M 0434 619 975
rickc@statesman-homes.com.au