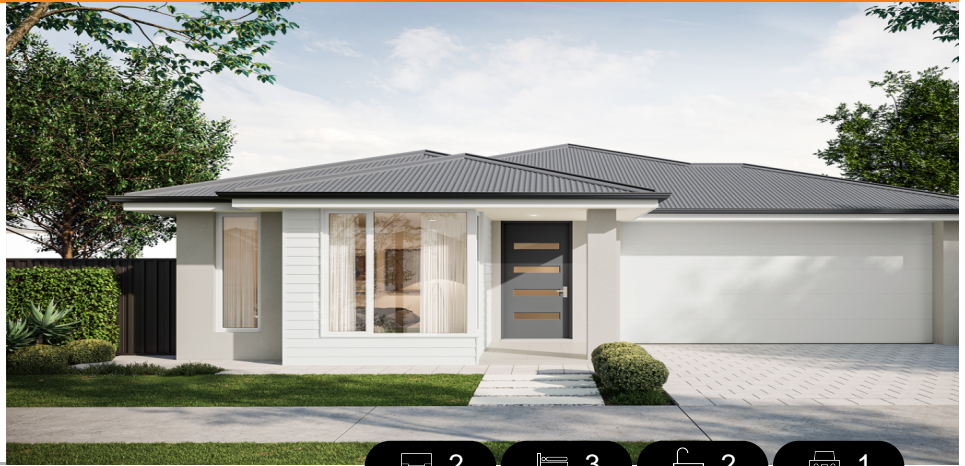


LOT 9000
NEW ROAD,
MUNNO PARA
'PLAYFORD ALIVE'

Lot Size: 300.00m²
House Size: 172.68m² / 18.59sqs
Width: 9.00m (incl. garage)
Elevation: Horizon 02 CLASSIC 12.5m



2



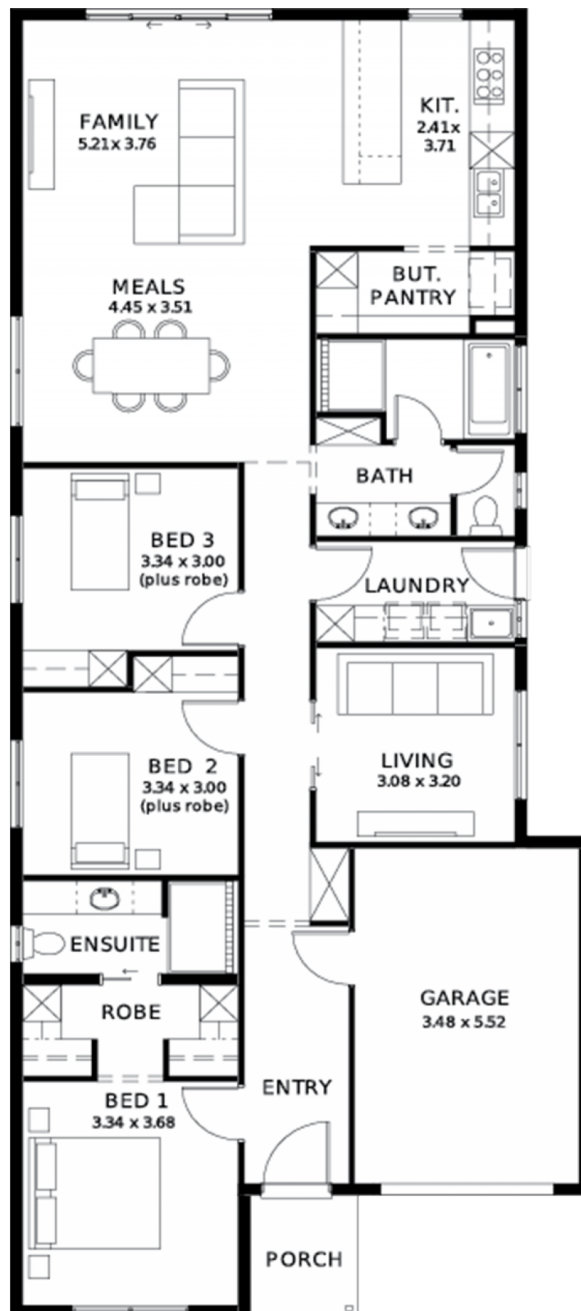
3



2



1



These exceptional features are just the beginning

First Home Buyer Only!

Premium Turnkey Inclusions

Architecturally Designed Home - Crafted by a world-renowned architect for modern living and timeless street appeal

Designer Interior Styling - Curated colour schemes and finishes by a renowned interior designer

Complete Flooring Package - Timber laminate to main living areas with premium carpet to bedrooms

6.6kW Solar System - Energy-efficient living with reduced electricity costs

Driveway & Perimeter Paving - Fully completed external paving for a polished, low-maintenance finish

Stormwater System Included - Engineered drainage solution for long-term durability

20mm Stone Benchtops - Premium stone surfaces to kitchen and pantry

Full height tiling to bathroom and en-suite

Ducted Reverse Cycle Air Conditioning - Zoned comfort throughout the home

Floor-to-Ceiling Tiles - Luxury tiling to bathrooms and ensuite

Site Costs Included - Comprehensive allowance for site preparation and works

Encumbrance Requirements Included - Designed to meet estate guidelines

High 2700mm Ceilings - Enhancing space, light, and overall luxury feel

Premium Kitchen Appliances - 900mm oven, cooktop, rangehood & dishwasher

25 Year Structural Guarantee - Built with confidence and long-term assurance

Packed with additional quality features, smart design elements, and premium finishes throughout - this home offers exceptional value and lifestyle

Call now or book an appointment to explore available house & land packages

STATESMAN
H O M E S

08 8366 0080
statesman-homes.com.au

Rohit Khanna M 0413 748 350
rohitk@statesman-homes.com.au