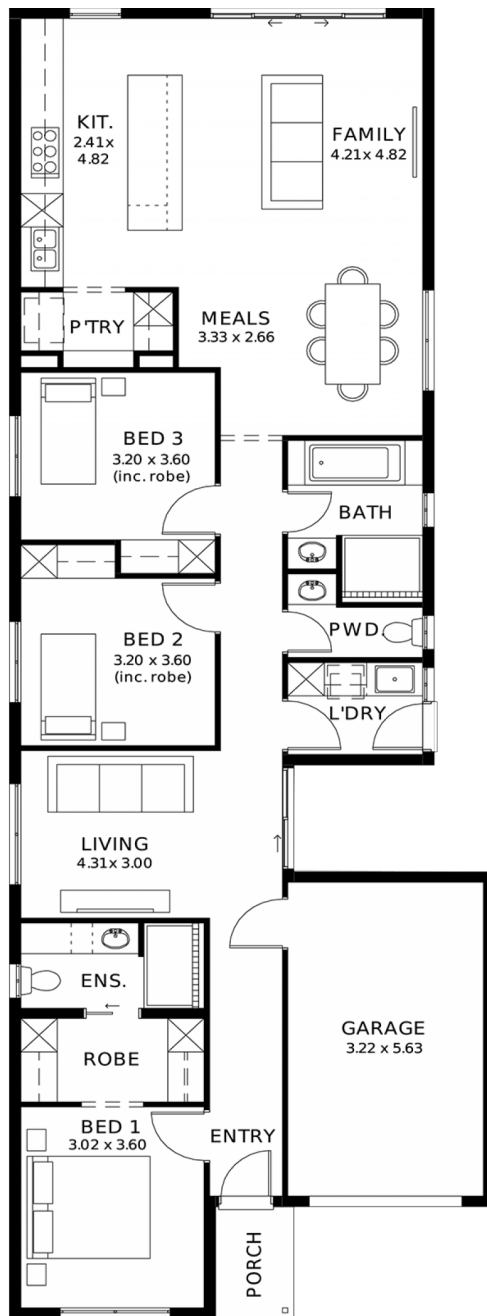
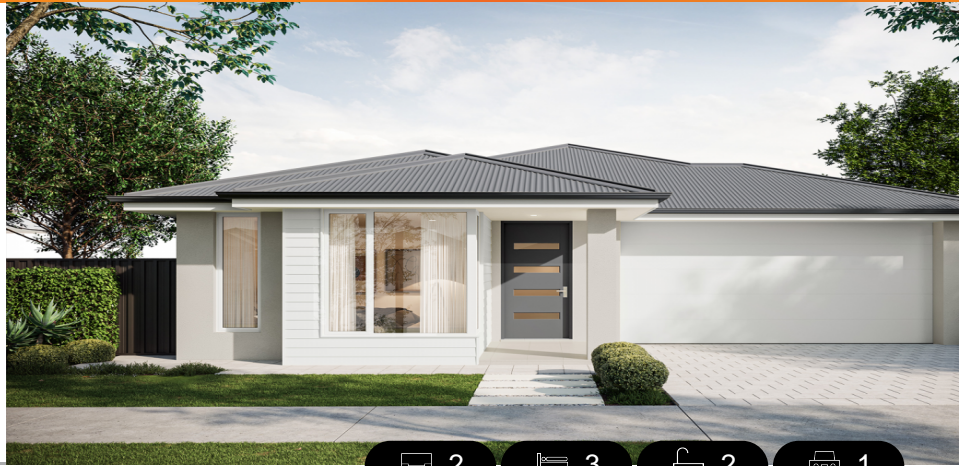


LOT 3410
FLORENCE STREET,
ANGLE VALE
'MIRAVALE'

Lot Size: 288.00m²
House Size 161.48m² / 17.38sqs
Width 8.00m (incl. garage)
Elevation: Horizon 02 CLASSIC 12.5m



These exceptional features are just the beginning

Built in 30 weeks, \$1k Deposit, what's not to love!

With over 95 standard inclusions, here's a few we think you'll like:

Reverse cycle airconditioning - zoned

6.6kW solar

All carpet and flooring

Floor-to-ceiling tiles in wet areas

Driveway paved

Perimeter path paving

Alfresco tiled

External power points

External gas BBQ point

Garden taps, front x1, back x2

Porch tiled

Full height tiling to bathroom and en-suite

External downlight to front porch

Wall stops to internal doors

TV points

Double power points throughout

900mm Appliances

Stainless steel dishwasher

Under bench microwave provision with pot draw

2.7m High Ceilings

2.3m High Doors

Door bell with chime

What are you waiting for? Enquire today to take the first step towards your home ownership dream

Get in touch today or visit me in person at the Brookmont display in Andrews Farm

STATESMAN
HOMES

08 8366 0080
statesman-homes.com.au

Angelique Pierce M 0404 200 323
angeliquep@hickinbotham.com.au