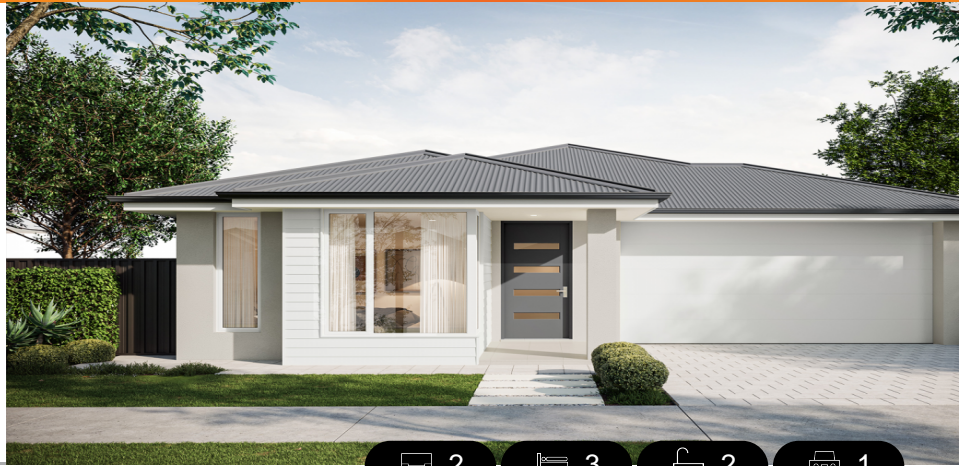


LOT 3247
FLORENCE STREET,
ANGLE VALE
'MIRAVALE'

Lot Size: 320.00m²
House Size 161.48m² / 17.38sqs
Width 8.00m (incl. garage)
Elevation: Horizon 02 CLASSIC 12.5m



2



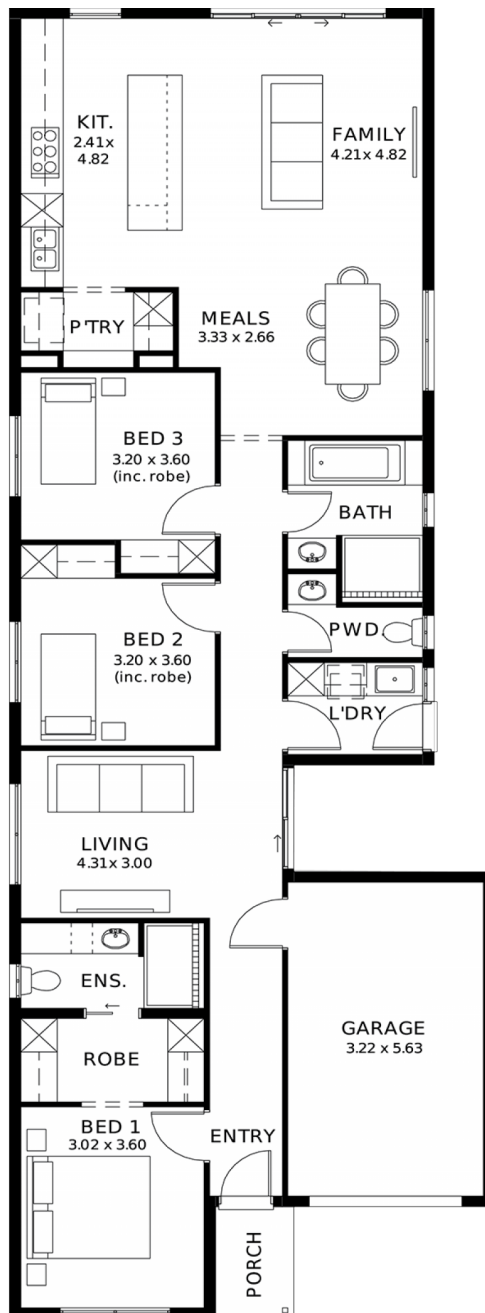
3



2



1



These exceptional features are just the beginning

Clever 3-bedroom, 2-living area design ideal for low-maintenance living

Designer kitchen with Zenyth stone benchtops, walk-in pantry and 900mm appliances

Private main suite with walk-in robe & ensuite

Built-in robes to remaining bedrooms

Open-plan living and dining designed for everyday comfort

2.7m High ceilings, 25-degree roof pitch & 450mm eaves

2340mm High internal & external doors throughout

Full height tiling to bathroom and en-suite

Ducted reverse cycle air conditioning with Wi-Fi control

Complete flooring package - timber laminate & carpet throughout

6.6kW Solar system for long-term efficiency

Driveway, paths, stormwater & essential external works included

30 Week Build Time Guarantee for added certainty and confidence

Streamlined, no-selection build process for a faster, more reliable build

STATESMAN
H O M E S

08 8366 0080
statesman-homes.com.au

Logan Kulas M 0404 971 008
logank@hickinbotham.com.au