

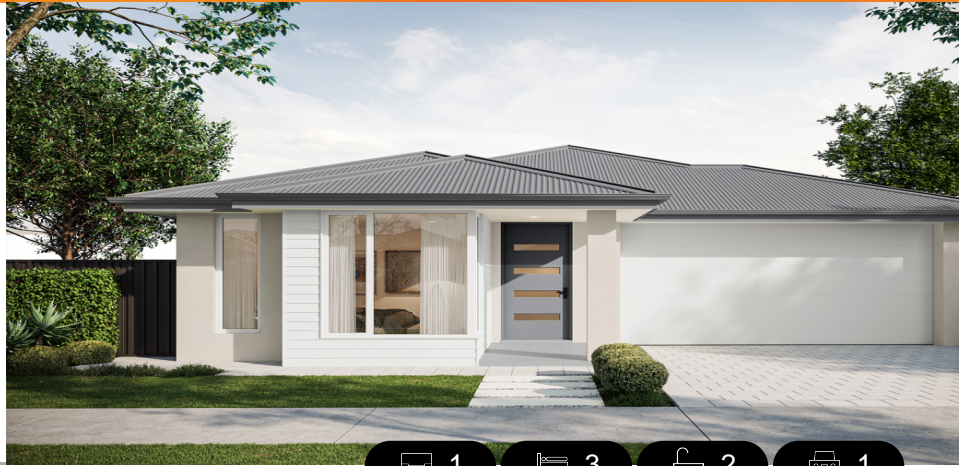
Celeste 3.5 (V1.3)

House and Land from

\$732,350*

LOT 1325
GENNARO STREET,
VIRGINIA
'VIRGINIA GROVE'

Lot Size: 284.00m²
House Size: 145.01m² / 15.60sqs
Width: 7.50m (incl. garage)
Elevation: Horizon 02 TIMELESS 12.5m



1



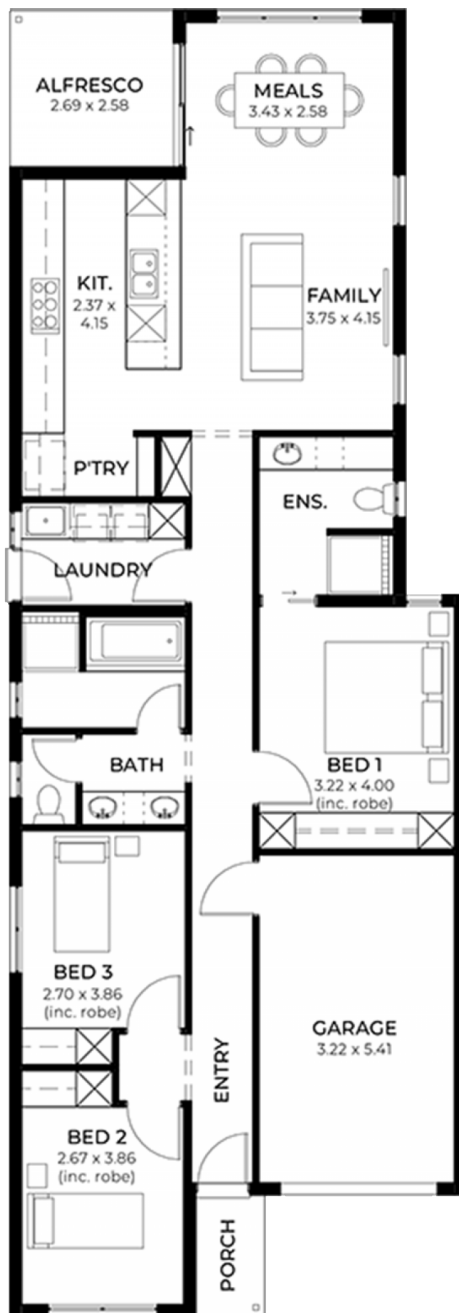
3



2



1



**STATESMAN
HOMES**

08 8366 0080
statesman-homes.com.au

Matt Tortorella M 0414 840 067
mattt@hickinbotham.com.au

* Terms and Condition's apply. For full details go to statesman-homes.com.au/terms-and-conditions/

These exceptional features are just the beginning

30 Week Build Guarantee for peace of mind

Choice of premium facades to suit your personal style

Thoughtfully designed, well-planned floorplan for modern living

2.7m High ceilings enhancing space and natural light

Entertainer-style kitchen with quality finishes, perfect for hosting

900mm Stainless steel appliances + Zenith stone benchtops

Full height tiling to bathroom and en-suite

Full-height tiling to ceiling in bathroom and ensuite

Ducted reverse cycle air conditioning with Wi-Fi controller

6.6kW Solar package

Interior colour selections by some of Adelaide's leading designers

Driveway paving, stormwater connection, and termite protection included

STATESMAN
HOMES

08 8366 0080
statesman-homes.com.au

Matt Tortorella M 0414 840 067
mattt@hickinbotham.com.au