

INSPIRED LIVING

ARCHITECT DESIGNED HOMES WITHOUT THE PREMIUM PRICE TAG



STATESMAN
HOMES

Driven by design, crafted by experience,
and inspired by the way you want to live,
we put expert architecture and interior
design, uncompromising quality and
affordable pricing within your reach.



Why shouldn't a home designed by a top architect be affordable and within your reach?

Well-designed spaces positively impact our lives and well-being, which is why we've collaborated with leading architects to create spaces that feel beautiful and are practical to live in with everything you expect in a contemporary home. Our expertise covers the entire building journey, including building design, interior design, and construction delivery, so you have the confidence you'll get an exceptional, quality-built home without the premium price tag.



MEET ONE OF OUR ARCHITECTS



FRANCESCO BONATO

Growing up in an architecturally rich suburb in Adelaide's east, award-winning architect Francesco (Fran) Bonato has a deeply personal connection to the new house designs he has now created for Statesman Homes.

Fran's father, a Venetian furniture maker who emigrated from Italy in the late 1950s, was so impressed with the architectural quality of a house he was working on as a contractor that he commissioned the builder, a young Alan Hickinbotham, to build him a new family home in the mid-1960s in the same street.

"Getting good design to the people, that was the philosophy all those years ago and it's still the same today," Fran explains of his work with Statesman Homes. "The fact is my whole path to architecture as a career was influenced by growing up in that environment, growing up in a well-built home in Athelstone. It was a traditional suburban environment, but the design of the homes showed an impressionable young teenage lad that a different world was possible."

Fran has more than 45 years of experience in architecture, including in his own architectural practice, Tectvs, which he founded 35 years ago. Fran graduated with Honours from the University of Adelaide, where he is also an Adjunct Associate Professor and completing a PhD. He is a Life Fellow of the Australian Institute of Architects, and a recipient of its highest honour in South Australia, the Sir James Irwin President's Medal.

At Tectvs, he has worked extensively across a range of projects, specialising in private homes, townhouses, apartments and furniture, as well as commercial projects such as wineries and restaurants.

His clients are local, national and international and he has studios in both Adelaide and Melbourne.

Fran is also involved in two passion projects in central-east Italy, where he is assisting in the restoration of a 15th-century house and replacing an old bell tower destroyed during a landslide triggered by an earthquake in the 1960s.

For his range of new house designs for Statesman Homes, Fran says he's been inspired by his family's original Athelstone home and the Flinders Ranges landscape, a quintessential part of South Australia. "I'm used to designing compact living spaces with a high level of efficiency and complexity. When it comes to designing apartments, every centimetre counts. We've adopted some of those elements into a traditional, free-standing house design. I wanted to capture that less tangible, sensory experience that many people inadvertently have when they walk into a well-designed home, a calming effect."

The Statesman Homes Difference

Discover the effortless journey to owning your dream home with a builder who has redefined convenience and luxury. By curating an exclusive collection of floorplans and design schemes crafted by renowned architects, designers, and stylists, we've streamlined the process to make homeownership as easy and stress-free as possible. Embark on the path to your new home with confidence, knowing that every choice has been made to elevate your living experience. And our scale, volume and wealth of building experience ensure your upfront pricing stays affordable.

Innovative Design

Every home is architecturally designed to bring you the very best in contemporary designer living minus the premium price tag. After decades of building homes for South Australians, we understand how to balance design excellence with meticulous craftsmanship and affordability.

Inclusive Pricing

What others call extras are standard right from the start. Every home is packed with value: 2700mm ceilings and 2340mm doors throughout, 6.6kW solar system, ducted reverse cycle air-conditioning, premium 900mm appliances, feature splashback kitchen tiles, and the clean lines of finger pull overhead joinery, master bedrooms to fit king-size beds, walk-in robes and luxuriously appointed bathrooms plus so much more.

In Reach

There is a home to suit every budget in our collection. Our architects, engineers, interior designers and suppliers have collaborated on each design, delivering economical solutions without compromising the design quality. This approach allows Statesman Homes to create an architecturally designed collection at an affordable price.



Our Home Features

GOOD DESIGN

Using the principles of good design, our homes are simple and timeless meeting your needs through any stage of your life. All designs ensure there's good flow throughout your home with no wasted space. Furniture placement is considered and realistically sized, for example our master suites are designed around king beds and couches and tables are drawn to scale, so you know the floorplans deliver on their spacing promise.

BUILT WITH HEBEL

Hebel panels are strong, energy-efficient, and eco-friendly, offering quick builds and long-lasting durability. They help regulate temperatures, reduce noise, and provide excellent fire resistance, making them a smart, sustainable choice for any home.

ENERGY EFFICIENCY

All designs have been energy assessed with premium insulation for all external walls, including batts with foil wrap to reduce heat loss and heat gain. Take comfort in knowing you have a 6.6kW solar system so you'll have access to clean energy from the moment you move in.

VALUE PACKED

Our designs are packed with value, complete with incredible features. You can expect 2700mm high ceilings, panel-lift garage doors, 25-degree roof pitch, ducted reverse cycle air conditioning, 900mm appliances, and luxurious bathrooms - these are standard with all our homes. We also give you the choice of spending a bit more to get additional features for that extra wow.

QUALITY INCLUSIONS

All our designs have impressive fixtures and fittings that combine style and functionality. We thoughtfully select the products we use to ensure their quality, longevity and affordability.

PRACTICAL FEATURES

It's the little things that often make the biggest difference. Built-in storage solutions, low-maintenance materials, mud rooms, butler's pantries, the use of natural light and cross-flow ventilation - it's these thoughtful features that will make living so much easier in your new home.

STREET APPEAL

Just as important as the interior, the exterior elevation of your new home deserves a contemporary and stylish aesthetic to maximise its street appeal. Our range of architecturally designed elevations complement all plans in our new collection and will generate visual interest with layered textures, colour and decorative features.

WE NEGOTIATE, YOU SAVE

We achieve cost savings through purchasing products and materials in bulk. We negotiate with our suppliers for the best prices and savings, which we pass on to you in the base price.



The Statesman Homes Process

01

Choose an architecturally designed floorplan and elevation that suits your needs.

02

Select from beautifully curated schemes by SA's leading designers and stylist.

03

Organise finance.

04

Sit tight while our team gets busy on building your dream home.

05

Time to move in!

Our collection of home designs

8.5m+ WIDE BLOCK DESIGNS

- 13 ___ Celeste 3.5
- 14 ___ Verve 3.5
- 15 ___ Verve 5
- 16 ___ Brio 3.5
- 17 ___ Brio 5
- 18 ___ Gossamer 3.5
- 19 ___ Gossamer 5
- 20 ___ Bene 3.5

12.5m+ WIDE BLOCK DESIGNS

- 24 ___ Sanctuary 3.5
- 25 ___ Sanctuary 5
- 26 ___ Umbra 3.5
- 27 ___ Umbra 5
- 28 ___ Aliro 3.5
- 29 ___ Aliro 5
- 30 ___ Maxim 3.5
- 31 ___ Maxim 5
- 32 ___ Zephyr 3.5
- 33 ___ Zephyr 5

14m+ WIDE BLOCK DESIGNS

- 36 ___ Sequoia 3.5
- 38 ___ Vestige 3.5
- 39 ___ Vestige 5
- 40 ___ Lyra 3.5
- 41 ___ Lyra 5
- 42 ___ Elysian 3.5
- 43 ___ Elysian 5
- 44 ___ Lumo 3.5
- 45 ___ Lumo 5
- 46 ___ Opal 3.5
- 47 ___ Opal 5

16m+ WIDE BLOCK DESIGNS

- 50 ___ Nimbus 3.5
- 51 ___ Nimbus 5
- 52 ___ Ethereal 3.5
- 53 ___ Ethereal 5
- 54 ___ Azure 3.5
- 55 ___ Azure 5
- 56 ___ Pura 3.5
- 57 ___ Pura 5

EXTRA WIDE BLOCK DESIGN

- 59 ___ Halo





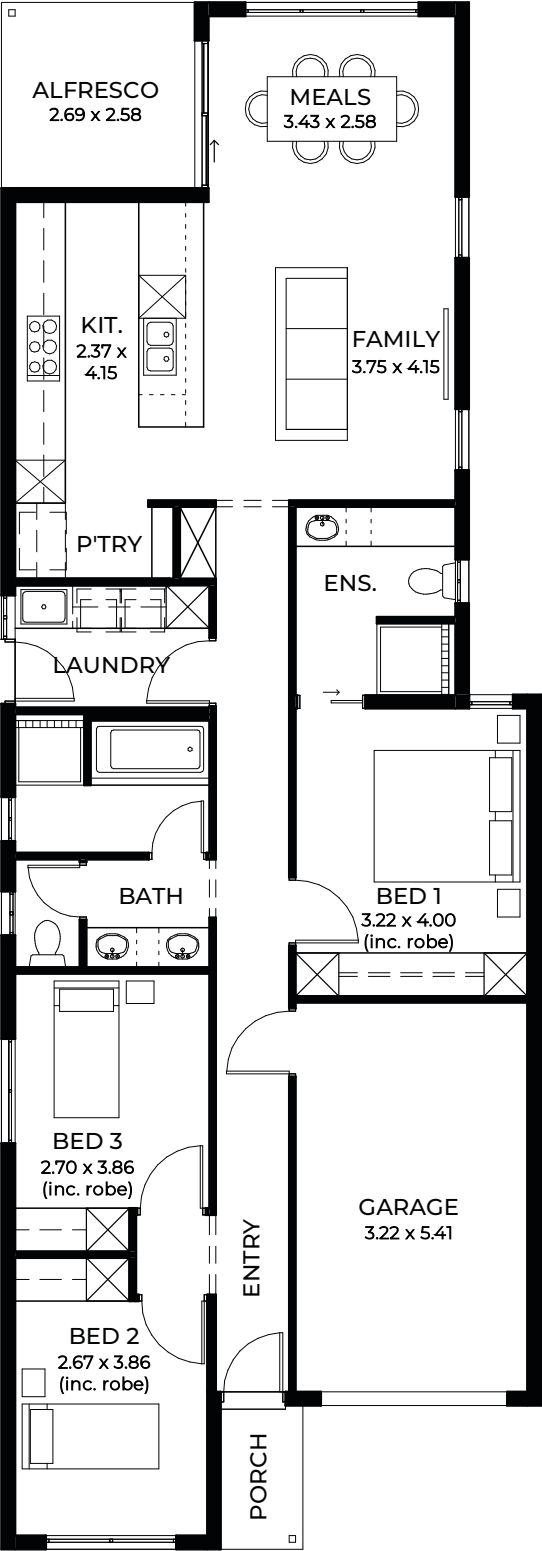
DESIGNS TO SUIT

8.5m+ Wide Blocks

Remarkably spacious and low maintenance, our compact home designs are perfect for first-time home buyers, empty nesters and investors. Be captivated by the free-flowing layout and smart design features, airy open-plan living areas and master-suite privacy, which combine to become the perfect solution for comfortable and contemporary living.



CELESTE_3.5



Suits
masterplanned
estates

For blocks with a 3.5m set back

1

3

2

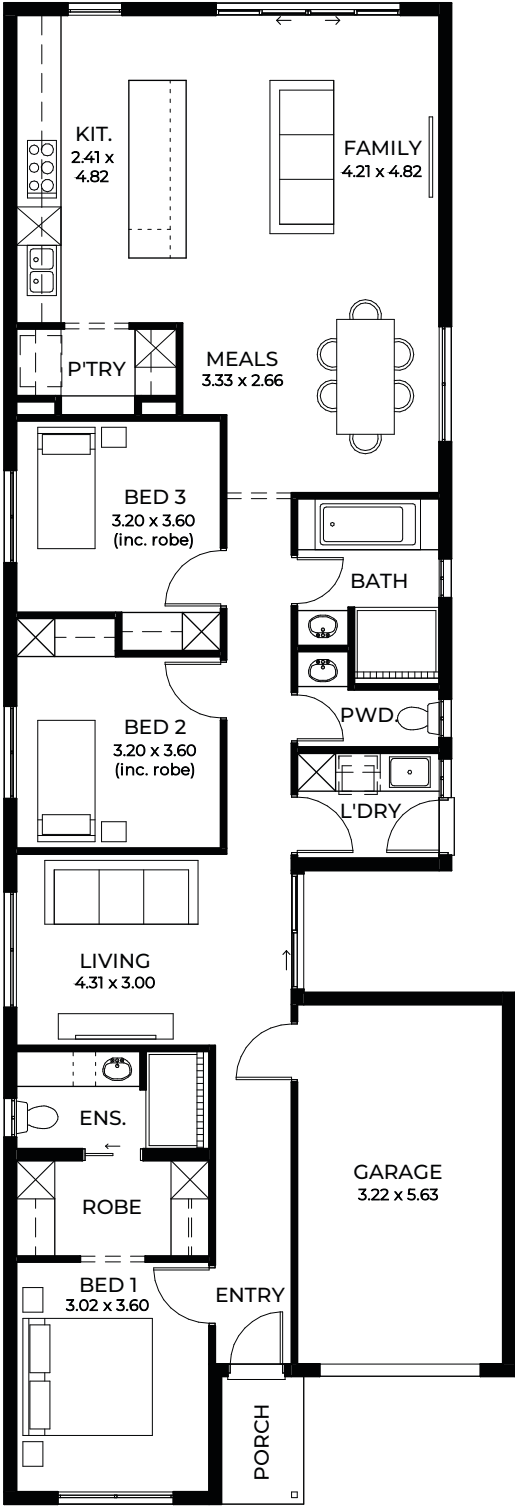
1

At just 7.5m-wide, Celeste proves innovation is never boring! Space is cleverly maximised throughout, while smart window placement lets in natural light where it’s most needed. A stylish alfresco area awaits seamless indoor-outdoor living and entertaining.

LIVING	116.69m ²
PORCH	2.28m ²
ALFRESCO	6.94m ²
GARAGE	19.10m ²
WIDTH	7.50m (incl. garage)
DEPTH	21.50m
TOTAL	145.01m ² / 15.60 sqs

*Facade chosen may affect site coverage. These floorplans, images and facades are for illustration purposes only. All room sizes are approximate. Unauthorised use of these plans constitutes a breach of copyright which may make you personally liable for damages. The industry standard is 20% of the contract sum. E&OE BLD 8969 RLA 230557 © Statesman Homes June 2025

VERVE_3.5



Suits
masterplanned
estates

For blocks with a 3.5m set back

 2

 3

 2

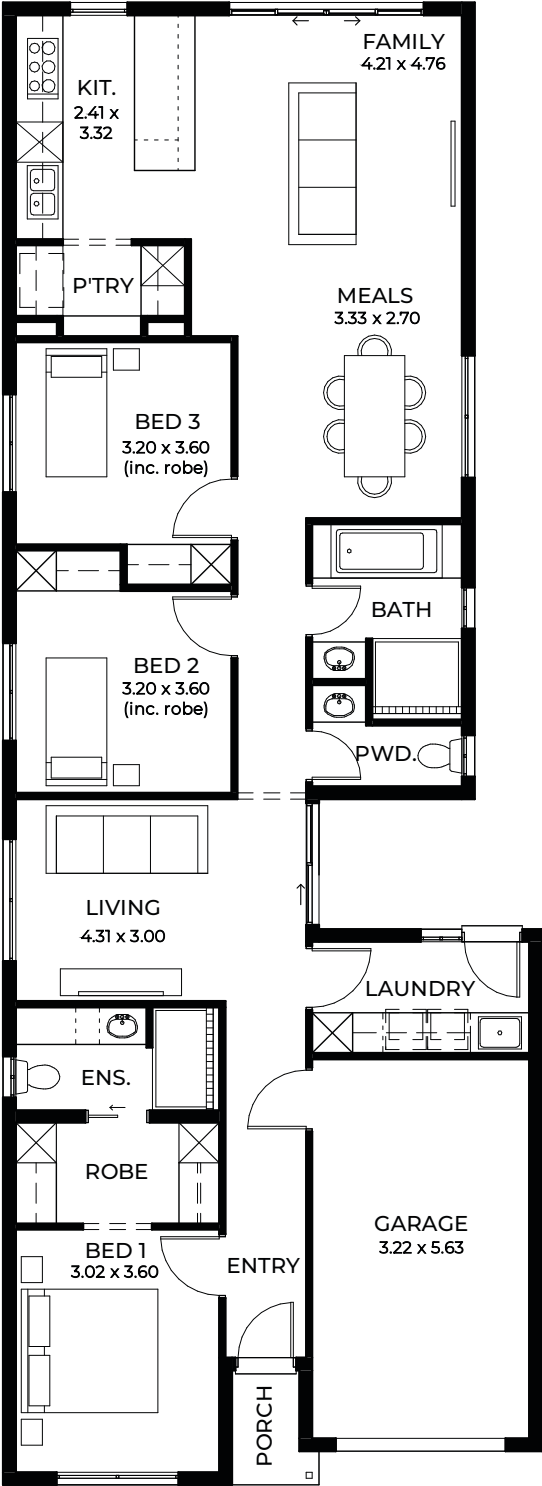
 1

Every feature for the modern family is included, from the master suite with a walk-in robe, a seperate powder room for busy mornings, two living areas and storage options in the laundry and pantry.

LIVING	138.41m ²
PORCH	2.58m ²
GARAGE	20.49m ²
WIDTH	8.00 (incl. garage)
DEPTH	23.50m
TOTAL	161.48m ² / 17.40 sqs

*Facade chosen may affect site coverage. These floorplans, images and facades are for illustration purposes only. All room sizes are approximate. Unauthorised use of these plans constitutes a breach of copyright which may make you personally liable for damages. The industry standard is 20% of the contract sum. E&OE BLD 8969 RLA 230557 © Statesman Homes June 2025

VERVE_5



Suits
masterplanned
estates

For blocks with a 5m set back

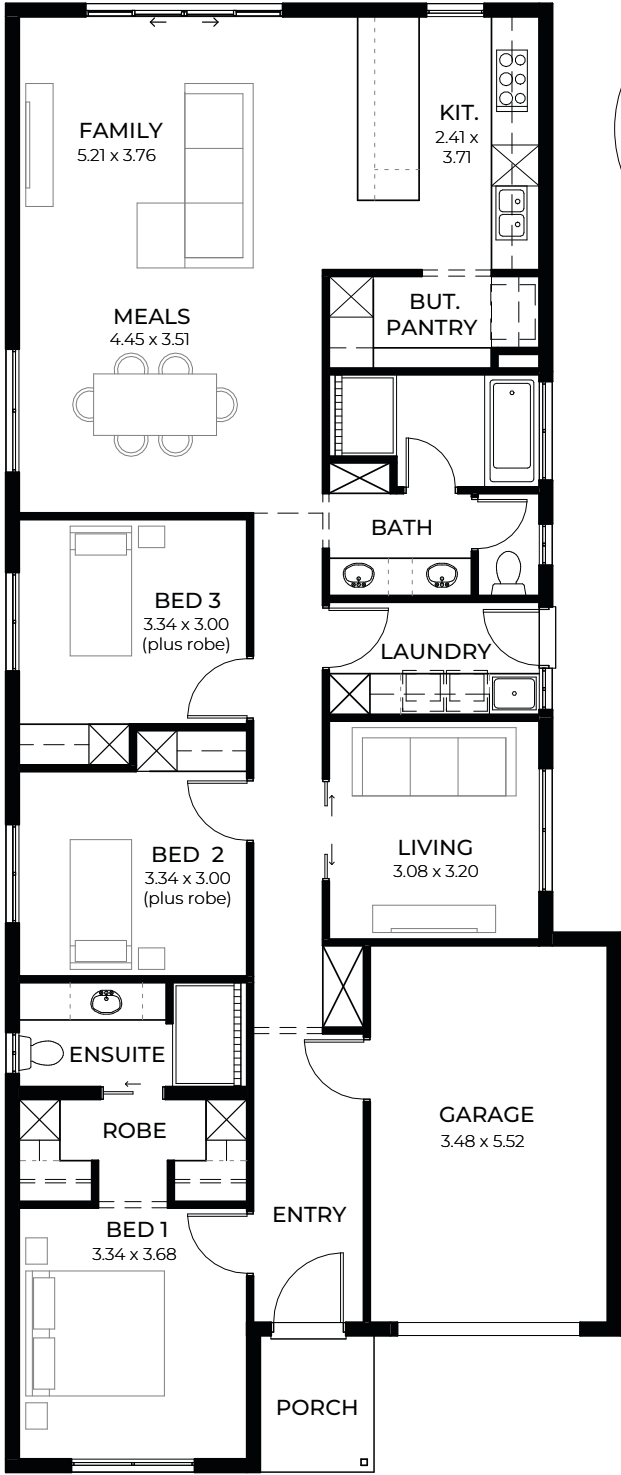
2 3 2 1

There's space to create an internal courtyard, a beautiful and practical addition that would provide extra light and privacy and add a touch of style.

LIVING	134.20m ²
PORCH	1.85m ²
GARAGE	20.09m ²
WIDTH	8.00m (incl. garage)
DEPTH	22.00m
TOTAL	156.14m ² / 16.80 sqs

*Facade chosen may affect site coverage. These floorplans, images and facades are for illustration purposes only. All room sizes are approximate. Unauthorised use of these plans constitutes a breach of copyright which may make you personally liable for damages. The industry standard is 20% of the contract sum. E&OE BLD 8969 RLA 230557 © Statesman Homes June 2025

BRIO_3.5



Suits
masterplanned
estates

For blocks with a 3.5m set back

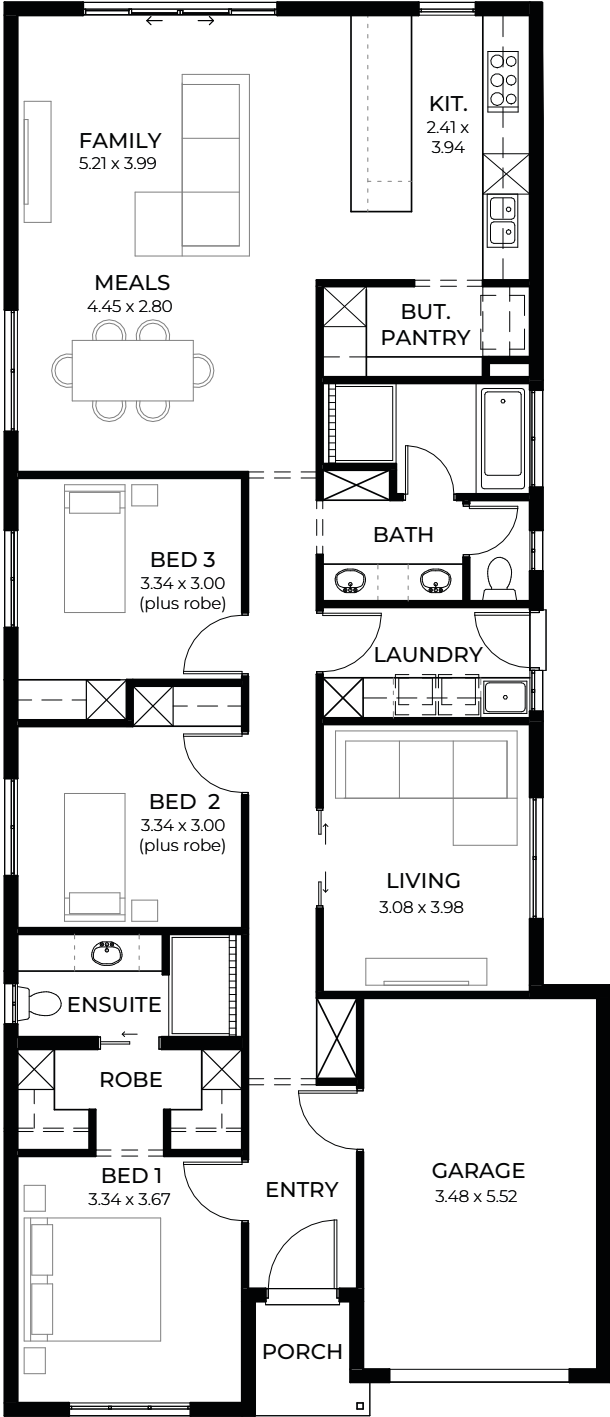
2 3 2 1

Everything you could possibly want in an innovative and modern three-bedroom home with airy open-plan living, stylish walk-in robe, three-way main bathroom and all-important entertainer kitchen.

LIVING	148.18m ²
PORCH	3.34m ²
GARAGE	21.16m ²
WIDTH	9.00m (incl. garage)
DEPTH	21.50m
TOTAL	172.68m ² / 18.60 sqs

*Facade chosen may affect site coverage. These floorplans, images and facades are for illustration purposes only. All room sizes are approximate. Unauthorised use of these plans constitutes a breach of copyright which may make you personally liable for damages. The industry standard is 20% of the contract sum. E&OE BLD 8969 RLA 230557 © Statesman Homes June 2025

BRIO_5



For blocks with a 5m set back

2

3

2

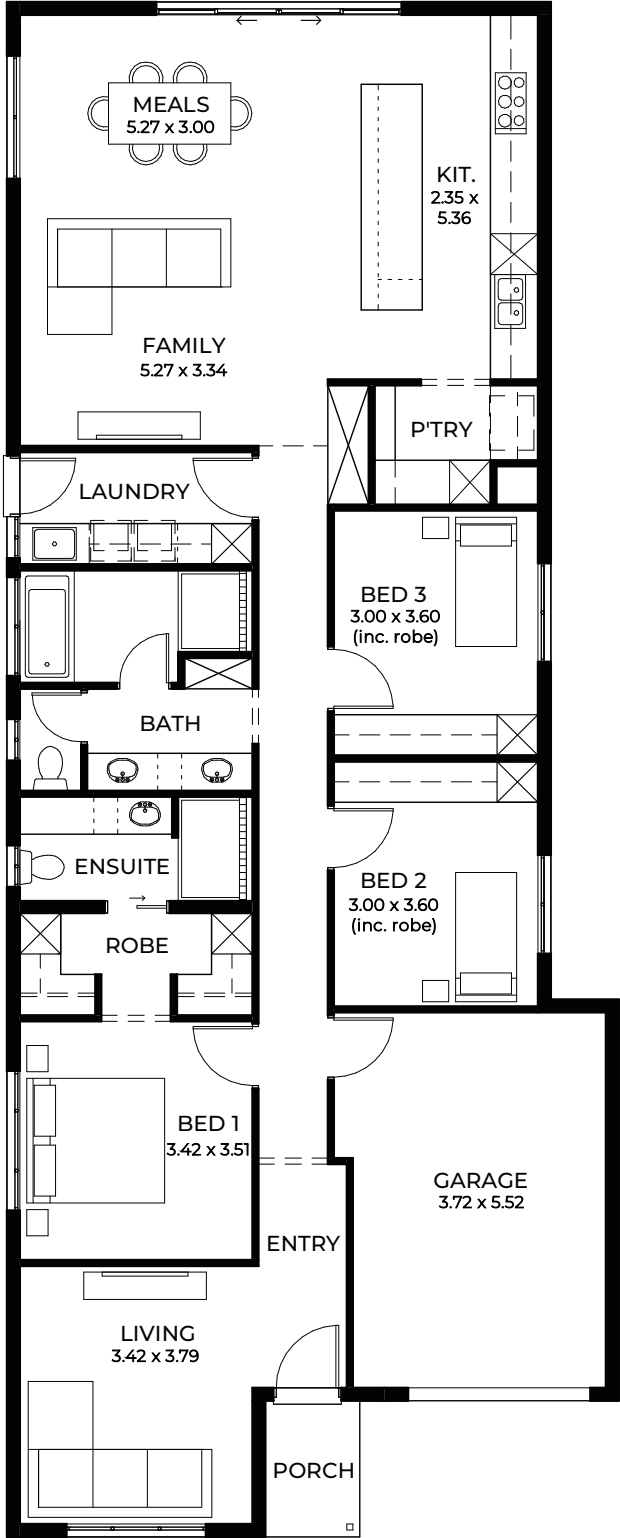
1

No space is wasted in our Brio design with its thoughtful layout. Designed around the way you want to live with light-filled rooms and spacious open-plan living.

LIVING	148.73m ²
PORCH	2.56m ²
GARAGE	21.41m ²
WIDTH	9.00m (incl. garage)
DEPTH	21.01m
TOTAL	172.70m ² / 18.60 sqs

*Facade chosen may affect site coverage. These floorplans, images and facades are for illustration purposes only. All room sizes are approximate. Unauthorised use of these plans constitutes a breach of copyright which may make you personally liable for damages. The industry standard is 20% of the contract sum. E&OE BLD 8969 RLA 230557 © Statesman Homes June 2025

GOSSAMER 3.5



For blocks with a 3.5m set back

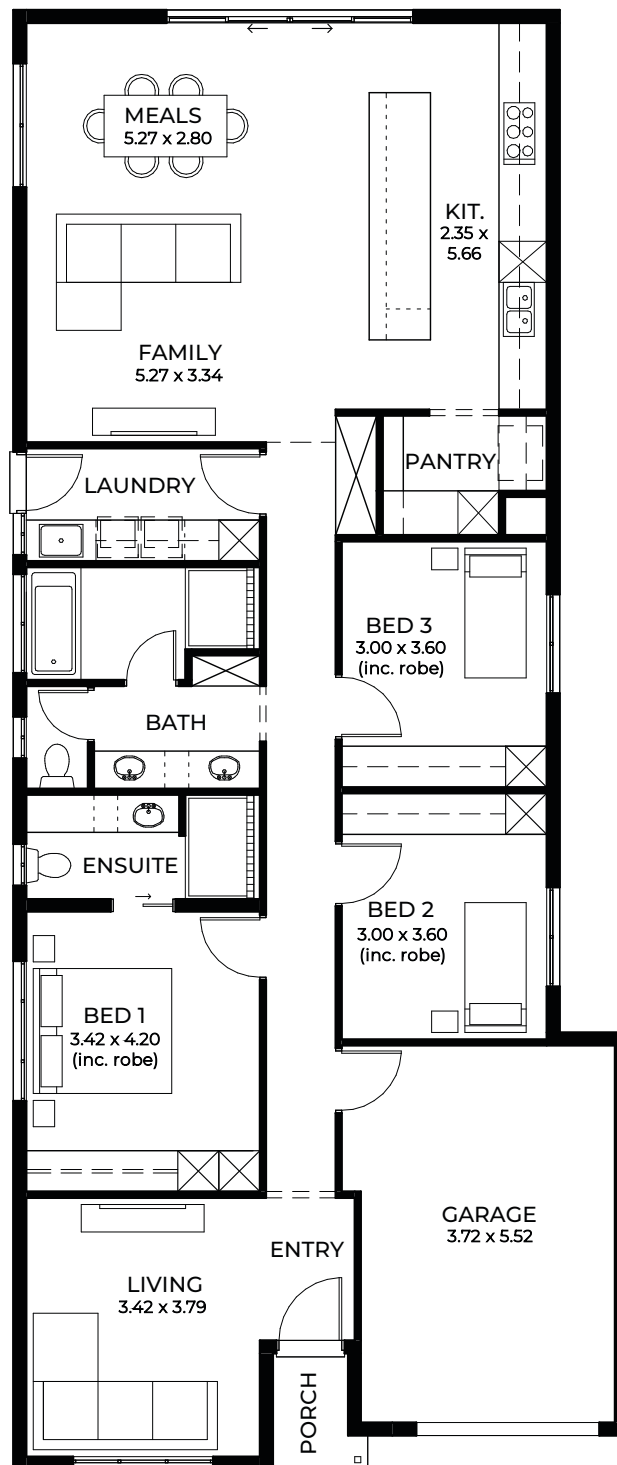
2 3 2 1

Everything in Gossamer is generous - from the size of all three bedrooms to the double-vanity bathroom, the versatile second living room and the super-sized Butler's pantry.

LIVING	154.93m ²
PORCH	2.78m ²
GARAGE	23.13m ²
WIDTH	9.00m (incl. garage)
DEPTH	22.57m
TOTAL	180.84m ² / 19.50 sqs

*Facade chosen may affect site coverage. These floorplans, images and facades are for illustration purposes only. All room sizes are approximate. Unauthorised use of these plans constitutes a breach of copyright which may make you personally liable for damages. The industry standard is 20% of the contract sum. E&OE BLD 8969 RLA 230557 © Statesman Homes June 2025

GOSSAMER_5



For blocks with a 5m set back

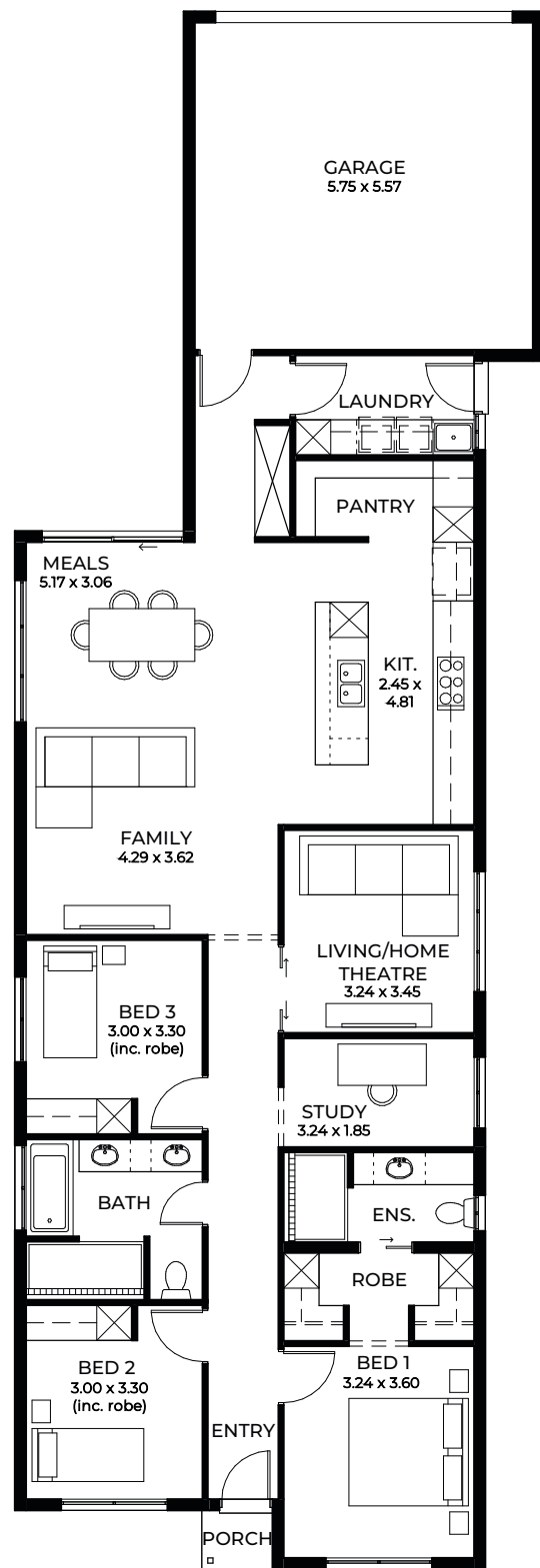
2 3 2 1

Quiet space, kids zone or home cinema? You've got options to suit your lifestyle with this second living area.

LIVING	150.06m ²
PORCH	2.02m ²
GARAGE	23.38m ²
WIDTH	9.00m (incl. garage)
DEPTH	21.37m
TOTAL	175.46m ² / 18.90 sqs

*Facade chosen may affect site coverage. These floorplans, images and facades are for illustration purposes only. All room sizes are approximate. Unauthorised use of these plans constitutes a breach of copyright which may make you personally liable for damages. The industry standard is 20% of the contract sum. E&OE BLD 8969 RLA 230557 © Statesman Homes June 2025

BENE_3.5



For blocks with a 3.5m set back



Designed with rear access in mind, Bene is loaded with elevated lifestyle features such as its Butler's pantry, home theatre and study, perfect for working from home. Its master-bedroom suite and three-way bathroom with double vanity mean the whole family can enjoy some luxury.

LIVING	152.73m ²
PORCH	1.20m ²
GARAGE	35.50m ²
WIDTH	9.00m (incl. garage)
DEPTH	26.50m
TOTAL	189.43m ² / 20.39 sqs

*Facade chosen may affect site coverage. These floorplans, images and facades are for illustration purposes only. All room sizes are approximate. Unauthorised use of these plans constitutes a breach of copyright which may make you personally liable for damages. The industry standard is 20% of the contract sum. E&OE BLD 8969 RLA 230557 © Statesman Homes June 2025





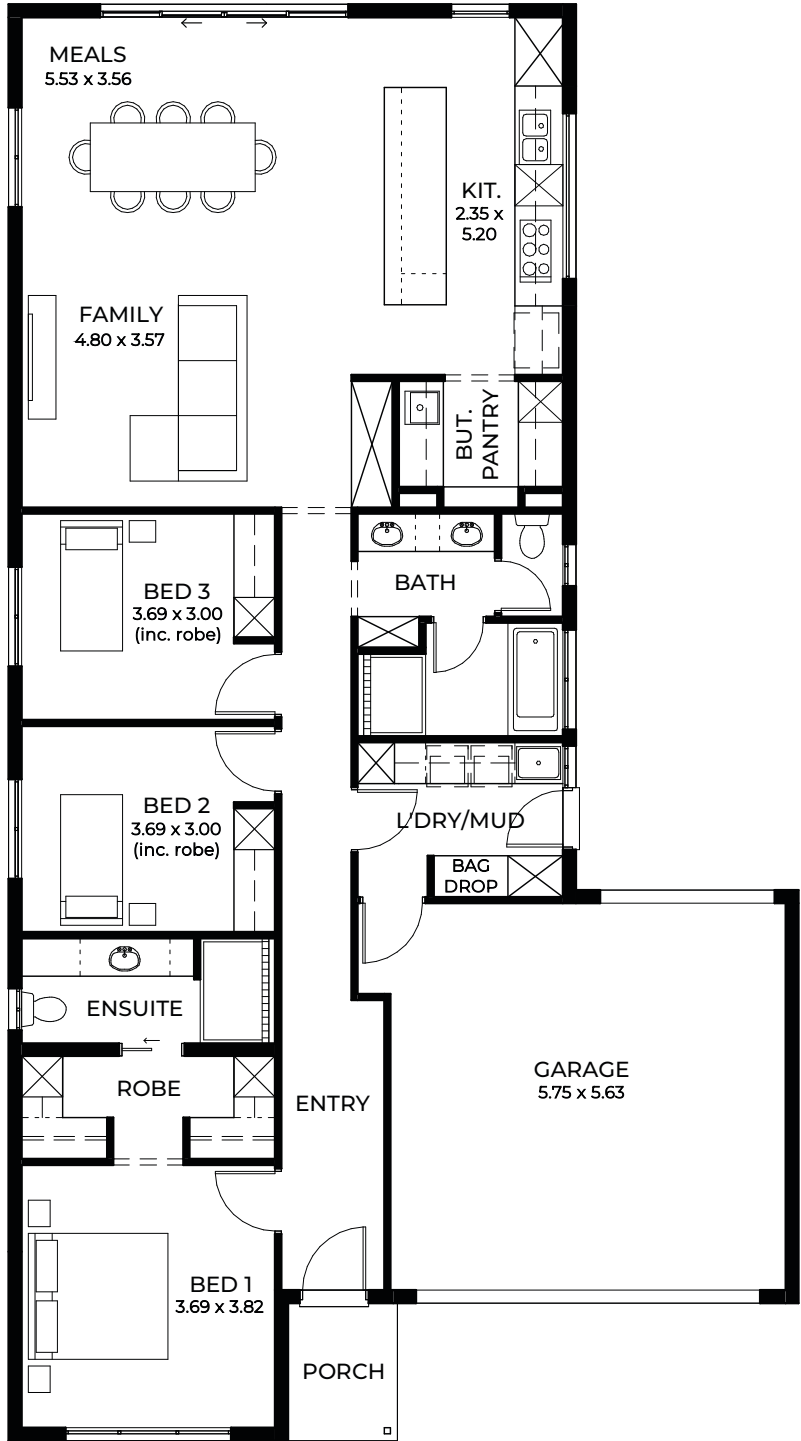


DESIGNS TO SUIT

12.5m+ Wide Blocks

Enjoy the best of both worlds: low-maintenance living with smart designs that grow and adapt to your family's lifestyle. Our spacious designs include a home theatre that could start life as a playroom or rumpus room, a butler's pantry off your generous kitchen and open-plan living area and a walk-through robe in the master ensuite retreat.

SANCTUARY 3.5



For blocks with a 3.5m set back



Living up to its name, Sanctuary is a dream retreat for the whole family with affordable luxury in the master suite, a three-way bathroom and generous-sized bedrooms.

LIVING	147.89m ²
PORCH	3.18m ²
GARAGE	35.84m ²
WIDTH	11.50m (incl. garage)
DEPTH	20.90m
TOTAL	186.91m ² / 20.1 sqs

*Facade chosen may affect site coverage. These floorplans, images and facades are for illustration purposes only. All room sizes are approximate. Unauthorised use of these plans constitutes a breach of copyright which may make you personally liable for damages. The industry standard is 20% of the contract sum. E&OE BLD 8969 RLA 230557 © Statesman Homes June 2025

SANCTUARY_5



For blocks with a 5m set back

1

3

2

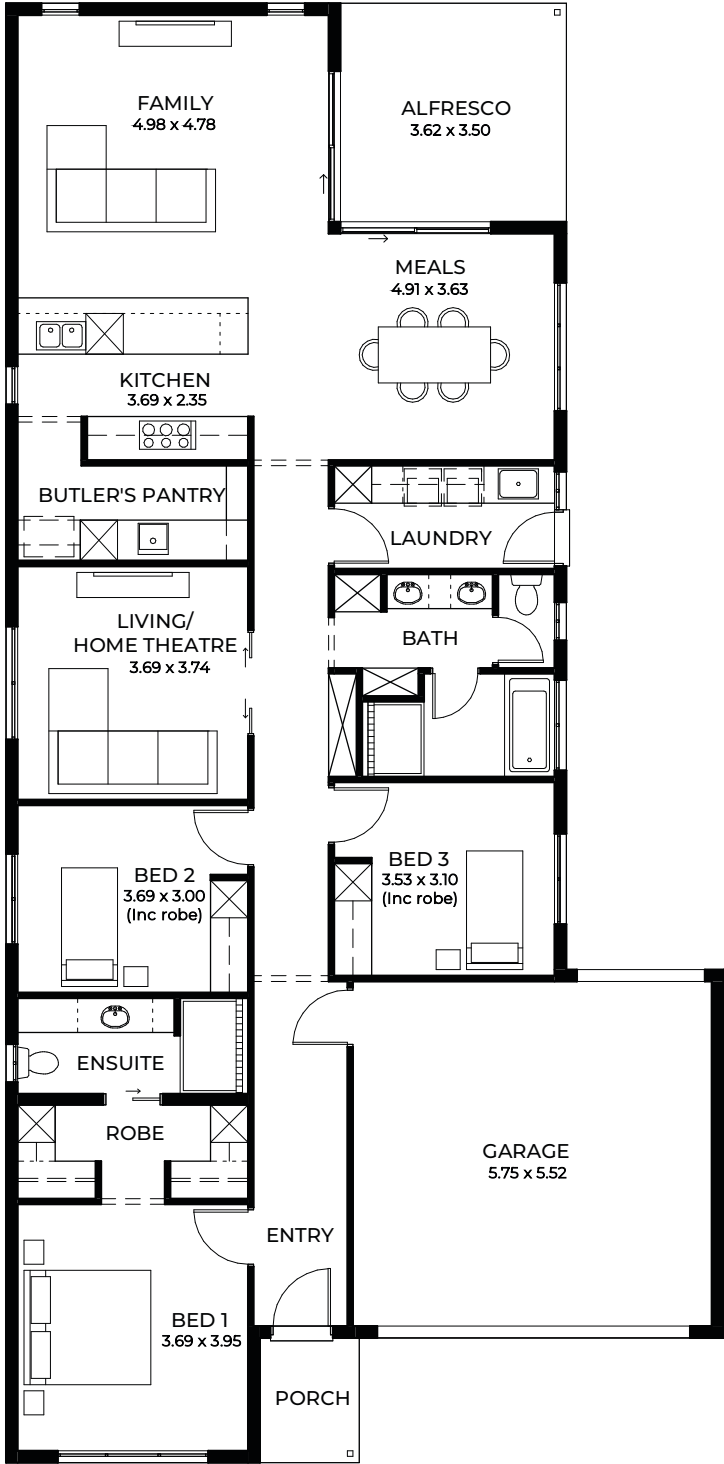
2

The ample bench space, modern 900mm appliances, extra store and butler's pantry create a dream gourmet kitchen, while expansive windows create a bright and welcoming living and dining area.

LIVING	139.98m ²
PORCH	2.36m ²
GARAGE	36.08m ²
WIDTH	11.50m (incl. garage)
DEPTH	19.40m
TOTAL	178.42m ² / 19.2 sqs

*Facade chosen may affect site coverage. These floorplans, images and facades are for illustration purposes only. All room sizes are approximate. Unauthorised use of these plans constitutes a breach of copyright which may make you personally liable for damages. The industry standard is 20% of the contract sum. E&OE BLD 8969 RLA 230557 © Statesman Homes June 2025

UMBRA_3.5



For blocks with a 3.5m set back

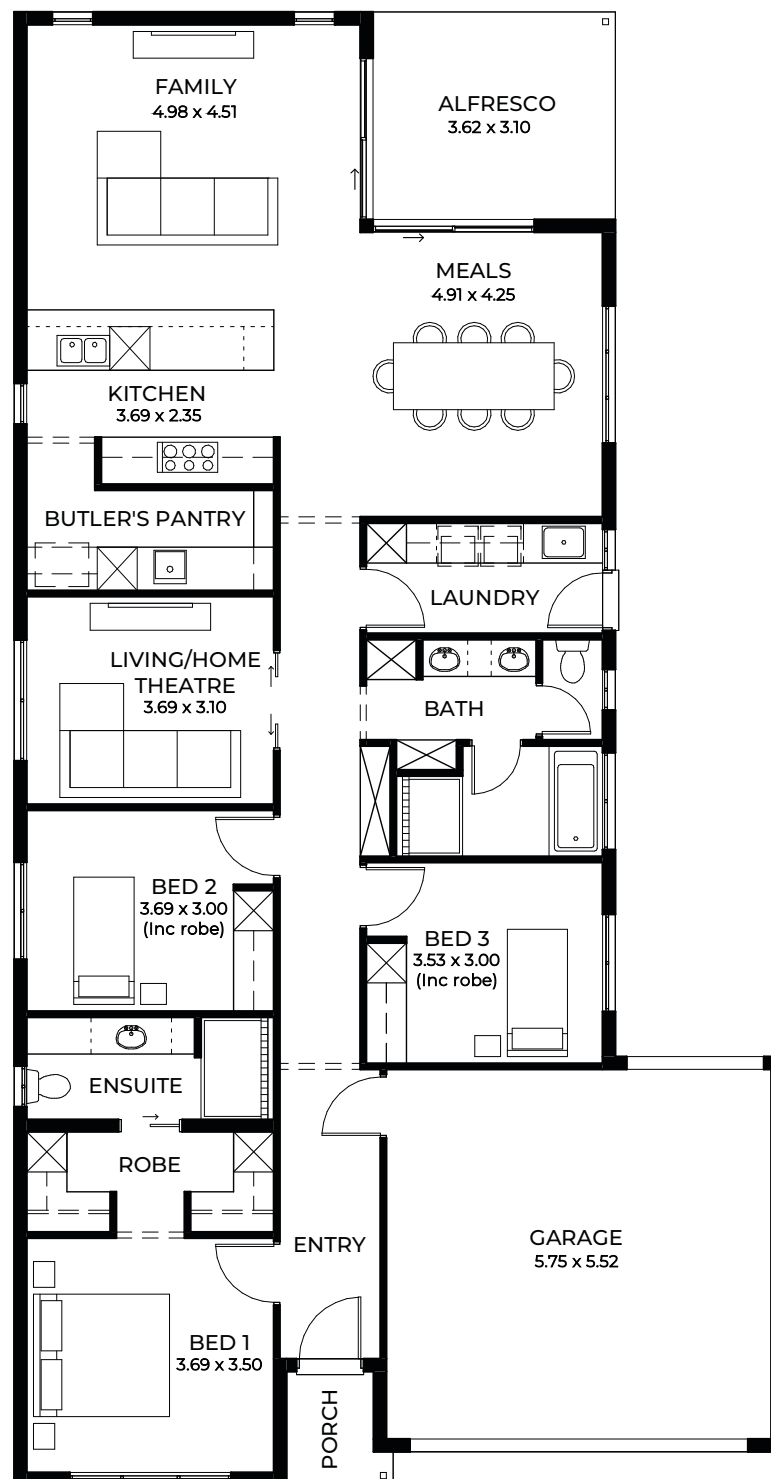
2 3 2 2

An extra-large butler's pantry housing the fridge turns this gorgeous designer kitchen into an added entertaining area, while the outdoor alfresco space is a seamless extension of both living and dining areas.

LIVING	167.92m ²
PORCH	3.18m ²
ALFRESCO	12.67m ²
GARAGE	34.41m ²
WIDTH	11.50m (incl. garage)
DEPTH	23.38m
TOTAL	218.18m ² / 23.5 sqs

*Facade chosen may affect site coverage. These floorplans, images and facades are for illustration purposes only. All room sizes are approximate. Unauthorised use of these plans constitutes a breach of copyright which may make you personally liable for damages. The industry standard is 20% of the contract sum. E&OE BLD 8969 RLA 230557 © Statesman Homes June 2025

UMBRA_5



For blocks with a 5m set back

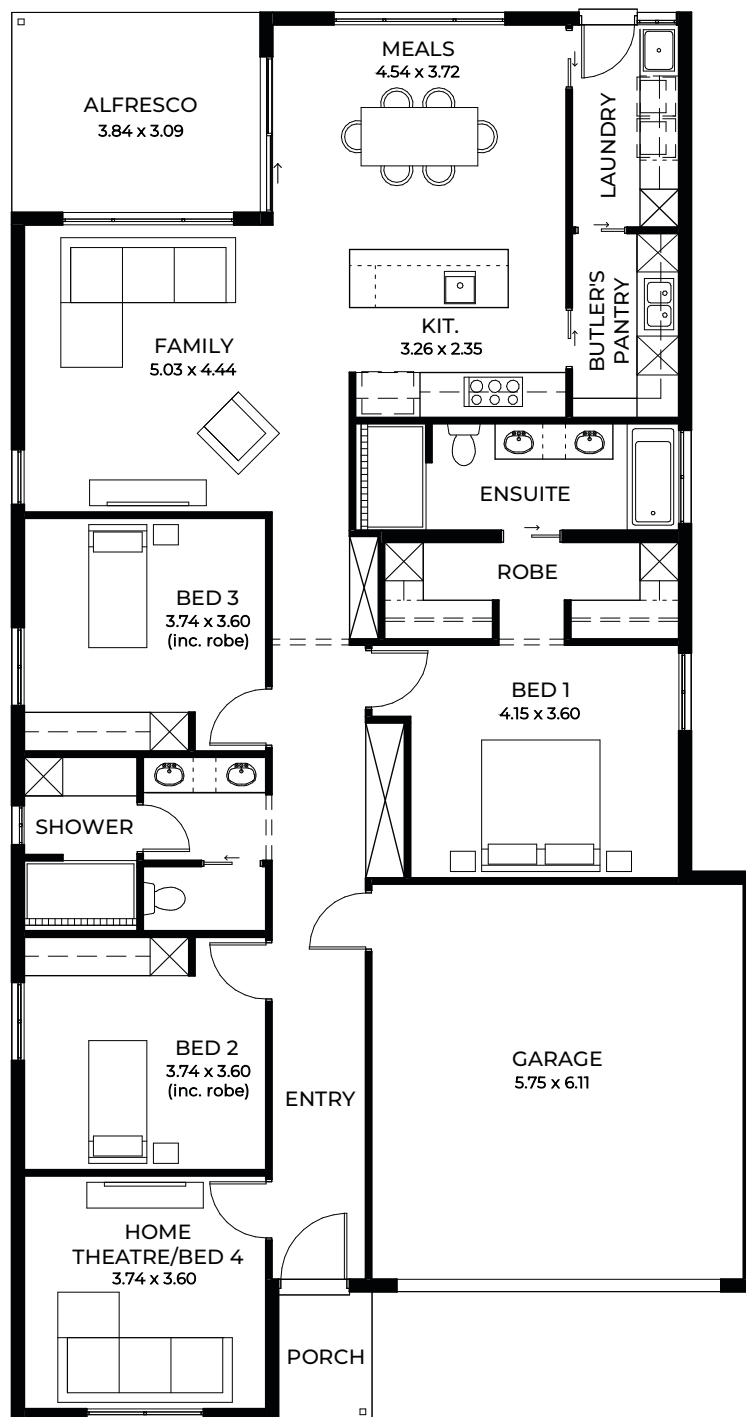


A central home theatre is ideally located close to the kitchen for snacks, while the super-size main bathroom features double vanities.

LIVING	162.53m ²
PORCH	2.36m ²
ALFRESCO	11.22m ²
GARAGE	34.66m ²
WIDTH	11.50m (incl. garage)
DEPTH	22.00m
TOTAL	210.77m ² / 22.7 sqs

*Facade chosen may affect site coverage. These floorplans, images and facades are for illustration purposes only. All room sizes are approximate. Unauthorised use of these plans constitutes a breach of copyright which may make you personally liable for damages. The industry standard is 20% of the contract sum. E&OE BLD 8969 RLA 230557 © Statesman Homes June 2025

ALIRO 3.5



Suits
masterplanned
estates and deep
infill blocks

For blocks with a 3.5m set back

2 3 2 2

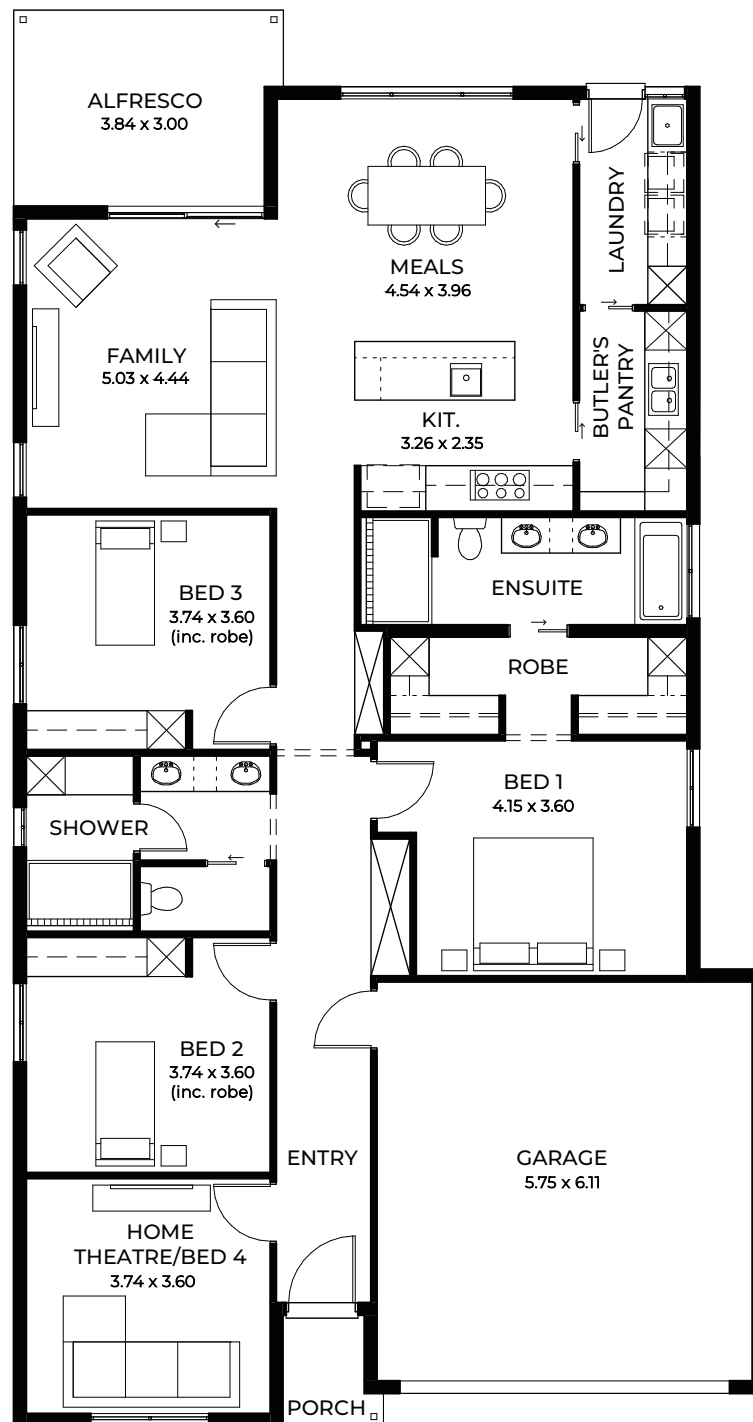
Designed by award-winning
architect Francesco Bonato

Aliro is perfectly suited to the
discerning homeowner or empty
nester with the spacious master,
a tranquil retreat set away from
street noise.

LIVING	172.71m ²
PORCH	2.90m ²
ALFRESCO	11.87m ²
GARAGE	37.63m ²
WIDTH	11.50m (incl. garage)
DEPTH	21.76m
TOTAL	225.11m ² / 24.2 sqs

*Facade chosen may affect site coverage. These floorplans, images and facades are for illustration purposes only. All room sizes are approximate. Unauthorised use of these plans constitutes a breach of copyright which may make you personally liable for damages. The industry standard is 20% of the contract sum. E&OE BLD 8969 RLA 230557 © Statesman Homes June 2025

ALIRO_5



Suits
masterplanned
estates and deep
infill blocks

For blocks with a 5m set back

2 3 2 2

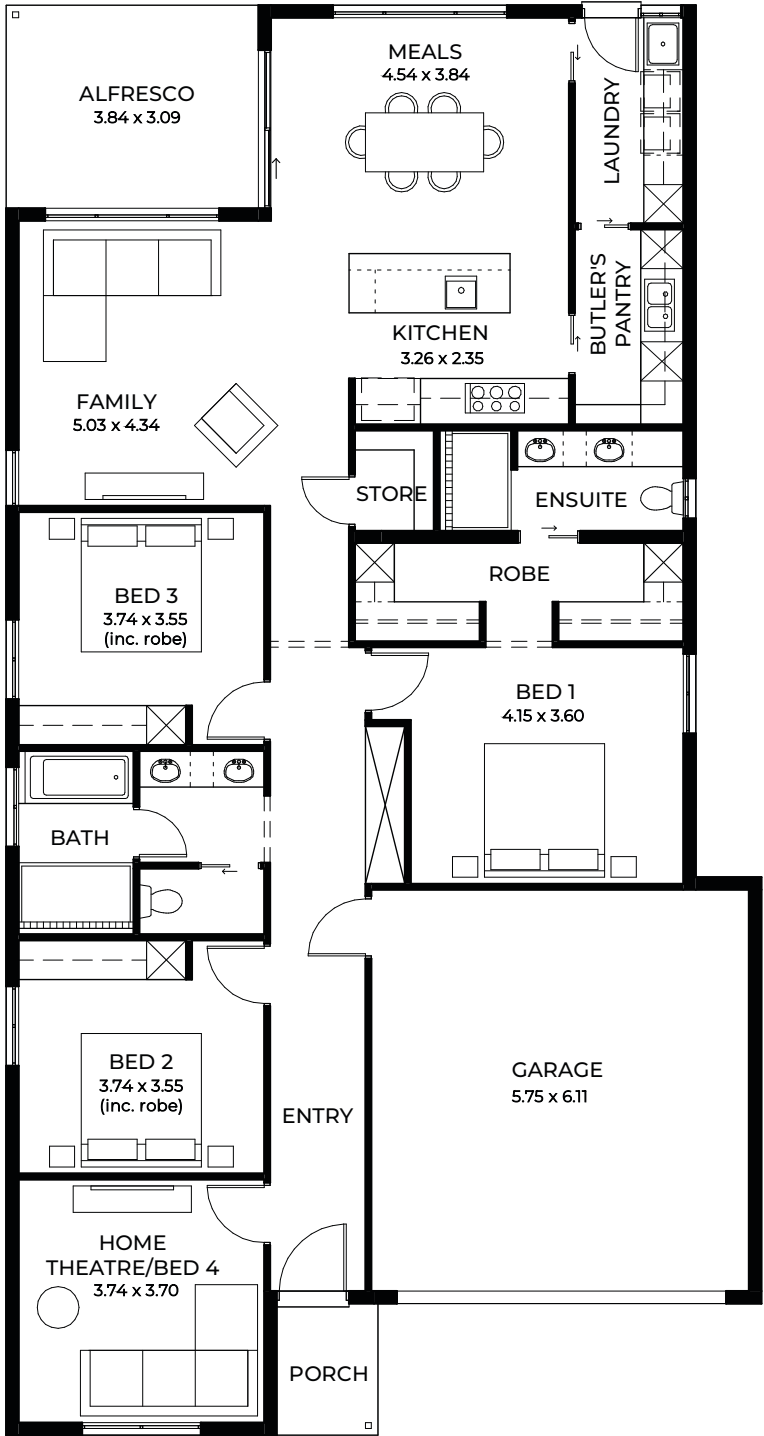
Designed by award-winning
architect Francesco Bonato

Unwind at the end of the day with a relaxing bath in this luxurious ensuite or enjoy cooking dinner in this designer kitchen while chatting to family chilling out in the beautifully designed casual living zones.

LIVING	172.15m ²
PORCH	2.27m ²
ALFRESCO	11.86m ²
GARAGE	37.88m ²
WIDTH	11.50m (incl. garage)
DEPTH	21.67m
TOTAL	224.16m ² / 24.1 sqs

*Facade chosen may affect site coverage. These floorplans, images and facades are for illustration purposes only. All room sizes are approximate. Unauthorised use of these plans constitutes a breach of copyright which may make you personally liable for damages. The industry standard is 20% of the contract sum. E&OE BLD 8969 RLA 230557 © Statesman Homes June 2025

MAXIM 3.5



Suits
masterplanned
estates and deep
infill blocks

For blocks with a 3.5m set back

 2

 3

 2

 2

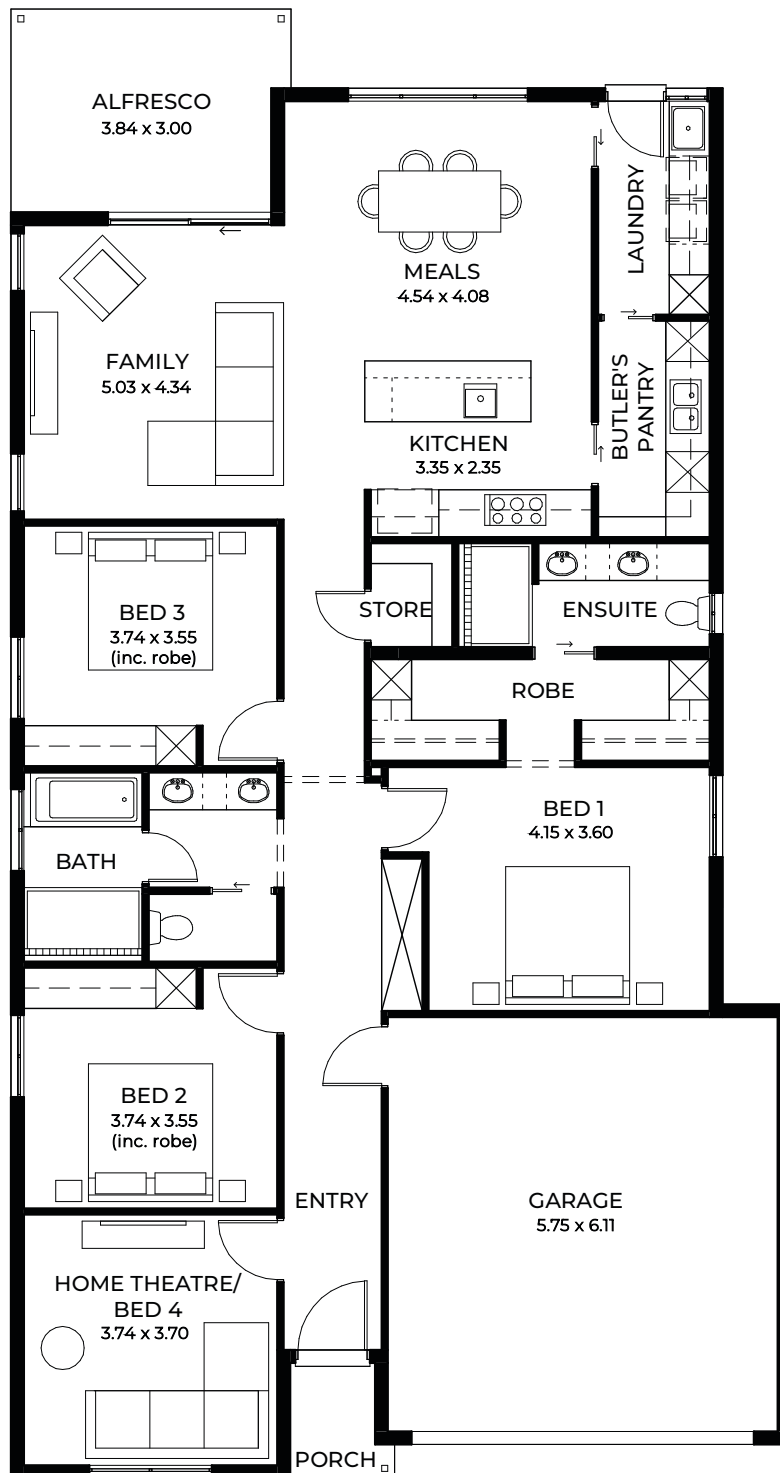
Designed by award-winning
architect Francesco Bonato

The Maxim has first homebuyers and families in mind with plenty of clever design ideas from the innovative laundry/pantry pod to a master away from street noise, and it's a home filled with great storage.

LIVING	172.71m ²
PORCH	3.08m ²
ALFRESCO	11.87m ²
GARAGE	37.63m ²
WIDTH	11.50m (incl. garage)
DEPTH	21.76m
TOTAL	225.29m ² / 24.2 sqs

*Facade chosen may affect site coverage. These floorplans, images and facades are for illustration purposes only. All room sizes are approximate. Unauthorised use of these plans constitutes a breach of copyright which may make you personally liable for damages. The industry standard is 20% of the contract sum. E&OE BLD 8969 RLA 230557 © Statesman Homes June 2025

MAXIM_5



Suits
masterplanned
estates and deep
infill blocks

For blocks with a 5m set back

2

3

2

2

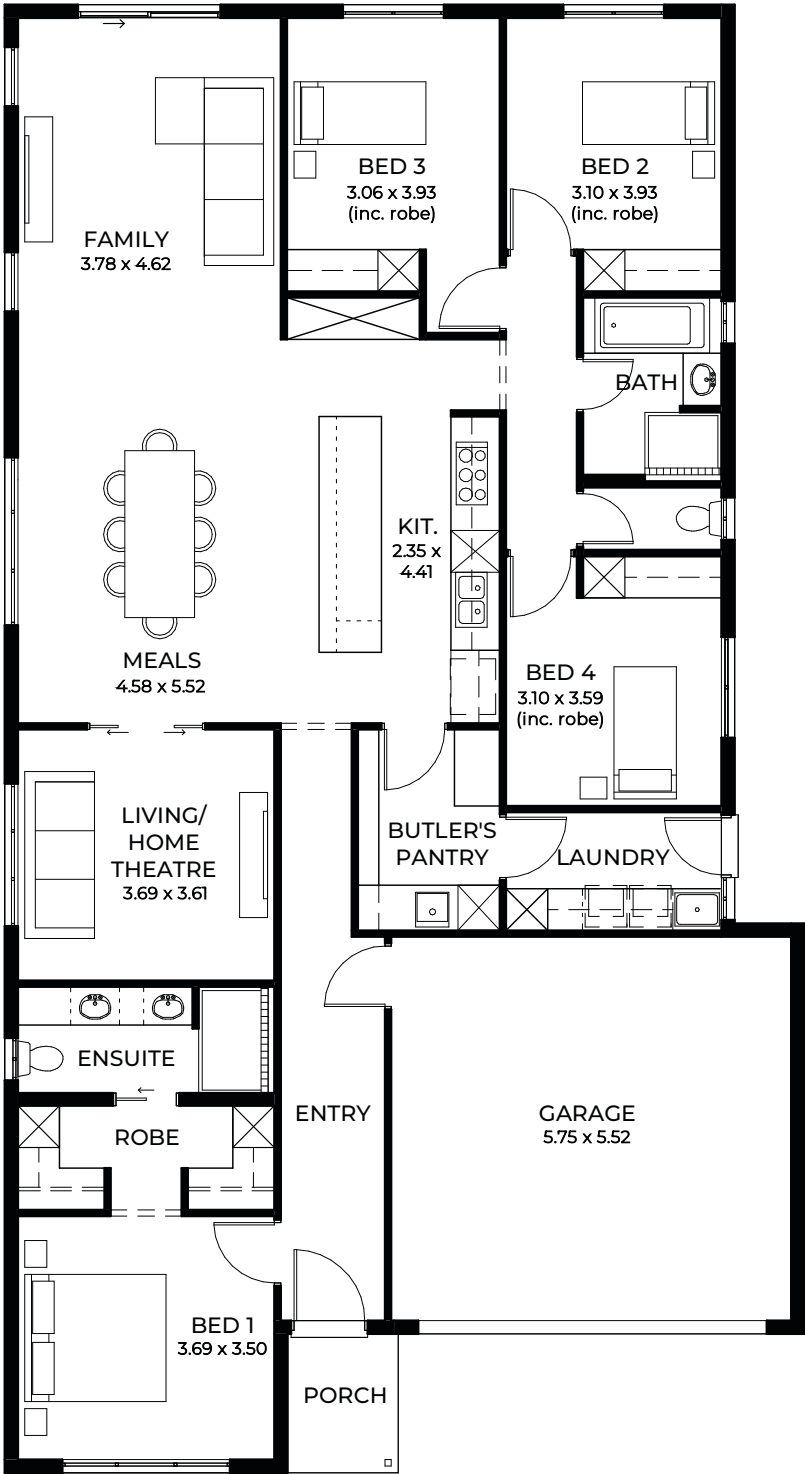
Designed by award-winning
architect Francesco Bonato

Every square centimetre is carefully considered in this design, with a clever three- way bathroom, large sized bedrooms, a handy store and a separate home theatre away from the spacious casual living zone.

LIVING	172.15m ²
PORCH	2.27m ²
ALFRESCO	11.86m ²
GARAGE	37.88m ²
WIDTH	11.50m (incl. garage)
DEPTH	21.67m
TOTAL	224.16m ² / 24.1 sqs

*Facade chosen may affect site coverage. These floorplans, images and facades are for illustration purposes only. All room sizes are approximate. Unauthorised use of these plans constitutes a breach of copyright which may make you personally liable for damages. The industry standard is 20% of the contract sum. E&OE BLD 8969 RLA 230557 © Statesman Homes June 2025

ZEPHYR_3.5



For blocks with a 3.5m set back

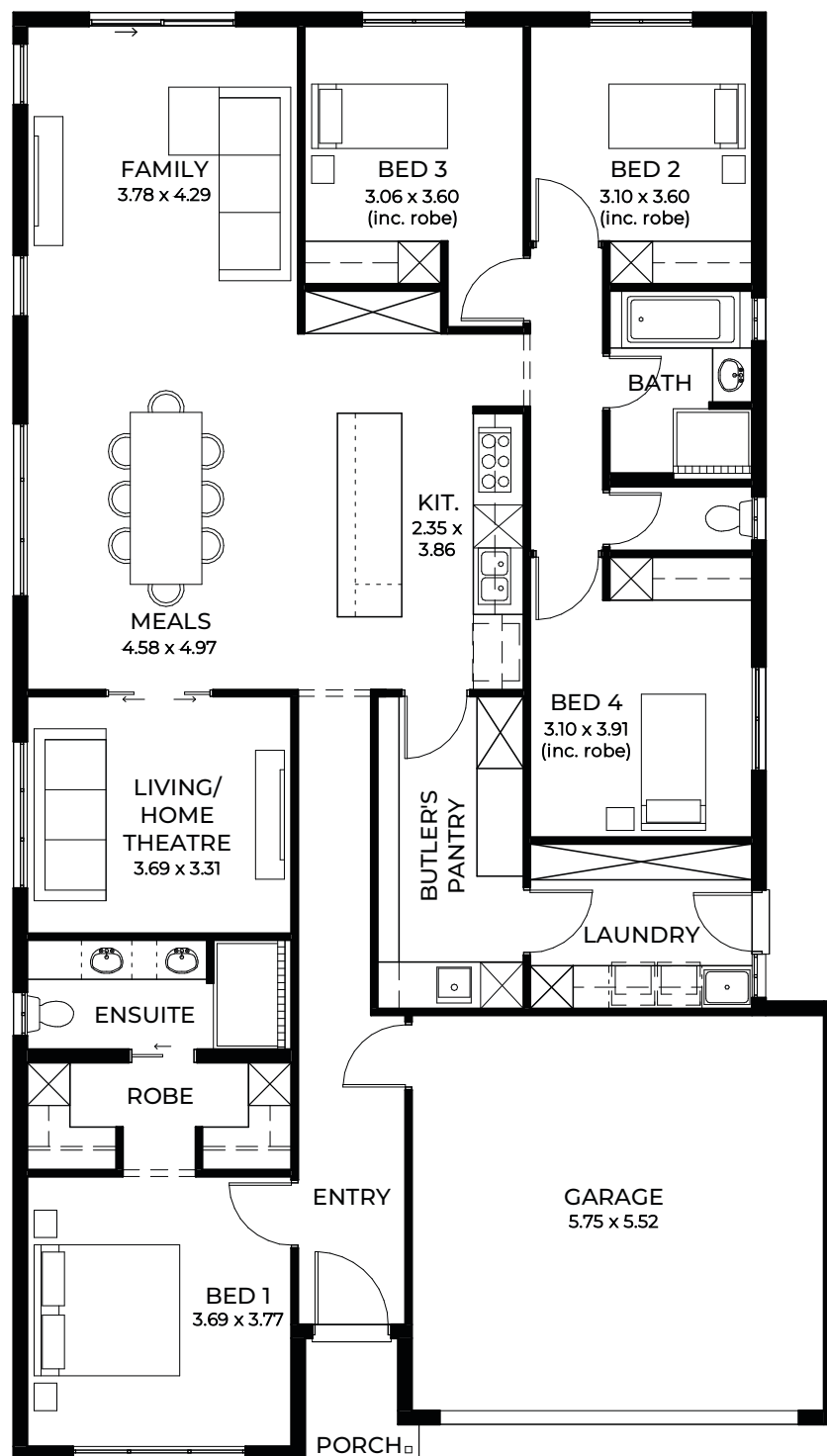
2 4 2 2

This four bedroom beauty is affordable luxury at its best. The sleeping zones and bathrooms surround the central, open-plan living, dining and home theatre bringing everyone together in an easily accessible space with good flow and circulation.

LIVING	180.57m ²
PORCH	3.18m ²
GARAGE	34.13m ²
WIDTH	11.50m (incl. garage)
DEPTH	21.11m
TOTAL	217.88m ² / 23.5 sqs

*Facade chosen may affect site coverage. These floorplans, images and facades are for illustration purposes only. All room sizes are approximate. Unauthorised use of these plans constitutes a breach of copyright which may make you personally liable for damages. The industry standard is 20% of the contract sum. E&OE BLD 8969 RLA 230557 © Statesman Homes June 2025

ZEPHYR_5



For blocks with a 5m set back

2 4 2 2

You'll love the super-sized butler's pantry and laundry with stylish joinery and storage space plus robes in every bedroom, not forgetting the double garage.

LIVING	178.85m ²
PORCH	2.36m ²
GARAGE	34.37m ²
WIDTH	11.50m (incl. garage)
DEPTH	20.20m
TOTAL	212.58m ² / 22.9 sqs

*Facade chosen may affect site coverage. These floorplans, images and facades are for illustration purposes only. All room sizes are approximate. Unauthorised use of these plans constitutes a breach of copyright which may make you personally liable for damages. The industry standard is 20% of the contract sum. E&OE BLD 8969 RLA 230557 © Statesman Homes June 2025



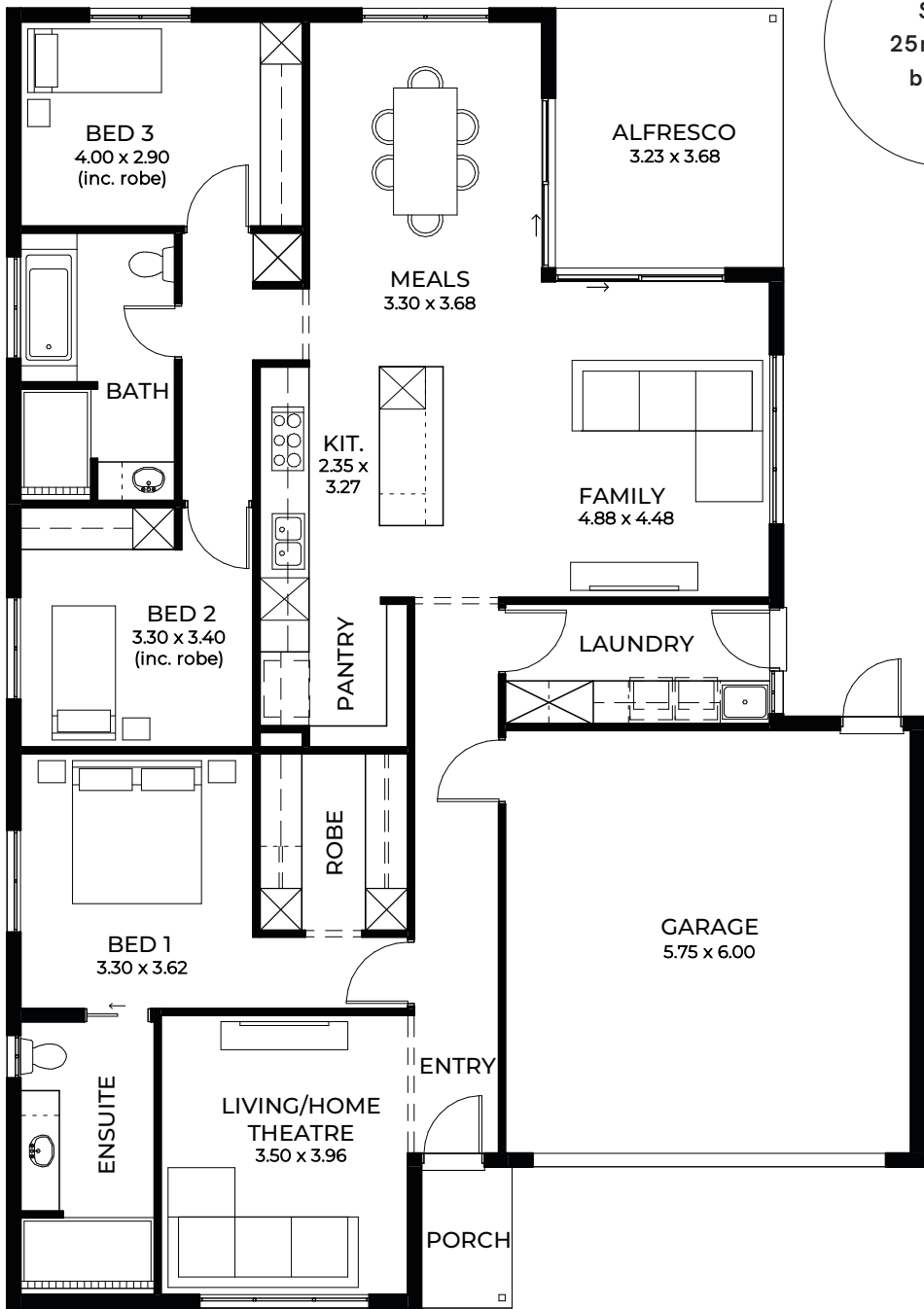


DESIGNS TO SUIT

14m+ Wide Blocks

Discover a range of functional layouts with no constraints on space. Enjoy the luxury of having multiple breakaway areas, giving everyone a space to call their own, while get-togethers are more enjoyable for the family-friendly layout in our kitchen, dining and entertaining spaces.

SEQUOIA 3.5



Suits
25m deep
blocks

For blocks with a 3.5m set back

2

3

2

2

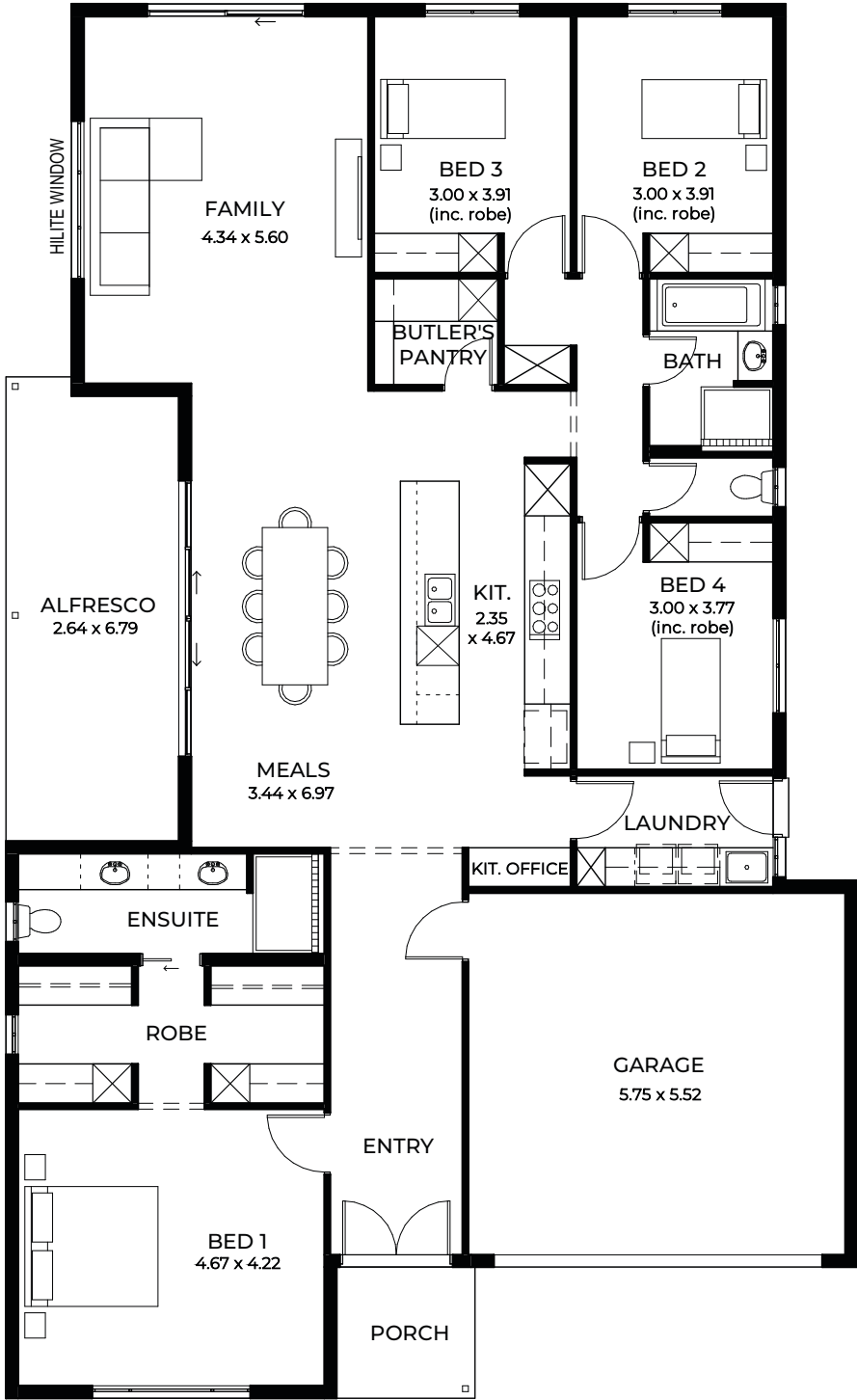
Sequoia maximises the use of space for households of all sizes. Its unique design incorporates wraparound zones: the open-plan dining and family area wraps around the outdoor alfresco; the L-shaped master suite cleverly wraps the flexible home theatre or front living room, while two bedrooms hug either side of the bathroom.

LIVING	156.07m ²
PORCH	2.58m ²
ALFRESCO	11.89m ²
GARAGE	37.17m ²
WIDTH	13.00 (incl. garage)
DEPTH	18.42m
TOTAL	207.71m ² / 22.4 sqs

*Facade chosen may affect site coverage. These floorplans, images and facades are for illustration purposes only. All room sizes are approximate. Unauthorised use of these plans constitutes a breach of copyright which may make you personally liable for damages. The industry standard is 20% of the contract sum. E&OE BLD 8969 RLA 230557 © Statesman Homes June 2025



VESTIGE_3.5



For blocks with a 3.5m set back

1

4

2

2

A luxurious master retreat with a glamorous walk-in robe and double vanity ensuite is thoughtfully positioned away from the rest of the home.

LIVING	187.85m ²
PORCH	4.22m ²
ALFRESCO	18.22m ²
GARAGE	34.14m ²
WIDTH	13.00m (incl. garage)
DEPTH	21.27m
TOTAL	244.43m ² / 26.3 sqs

*Facade chosen may affect site coverage. These floorplans, images and facades are for illustration purposes only. All room sizes are approximate. Unauthorised use of these plans constitutes a breach of copyright which may make you personally liable for damages. The industry standard is 20% of the contract sum. E&OE BLD 8969 RLA 230557 © Statesman Homes June 2025

ALFRESCO
2.64 x 5.82

FAMILY
4.34 x 5.60

MEALS
3.44 x 6.00

BED 1
4.67 x 3.69

BED 2
3.00 x 3.91 (inc. robe)

BED 3
3.00 x 3.91 (inc. robe)

BED 4
3.00 x 3.77 (inc. robe)

BUTLER'S PANTRY

KIT.
2.35 x 4.67

BATH

ENSUITE

ROBE

KIT. OFFICE

LAUNDRY

GARAGE
5.75 x 5.52

ENTRY

PORCH

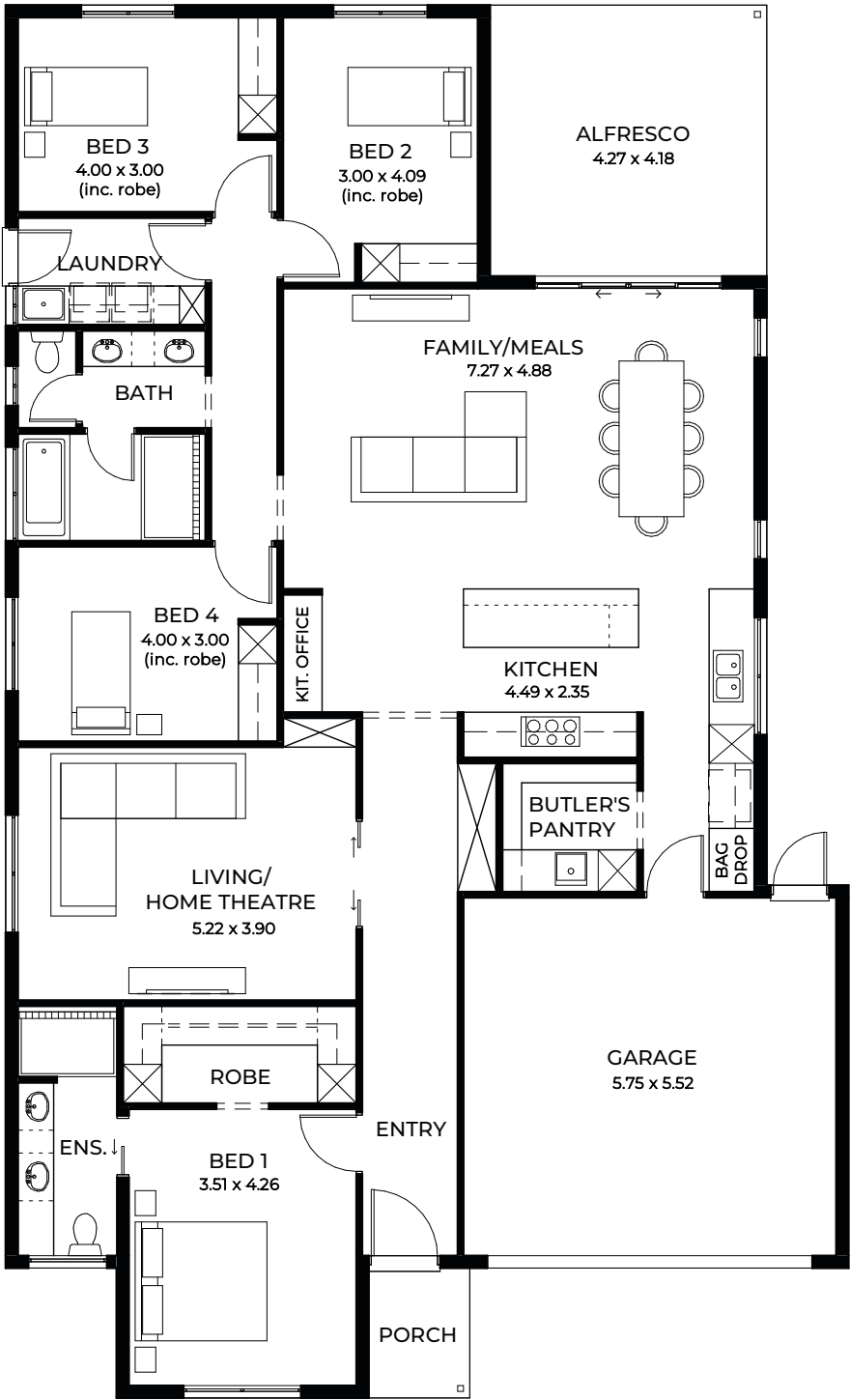
HILITE WINDOW

1 4 2 2

LIVING	180.41m ²
PORCH	3.24m ²
ALFRESCO	15.65m ²
GARAGE	34.39m ²
WIDTH	13.00m (incl. garage)
DEPTH	19.77m
TOTAL	233.69m ² / 25.2 sqs

39

LYRA_3.5



For blocks with a 3.5m set back

 2

 4

 2

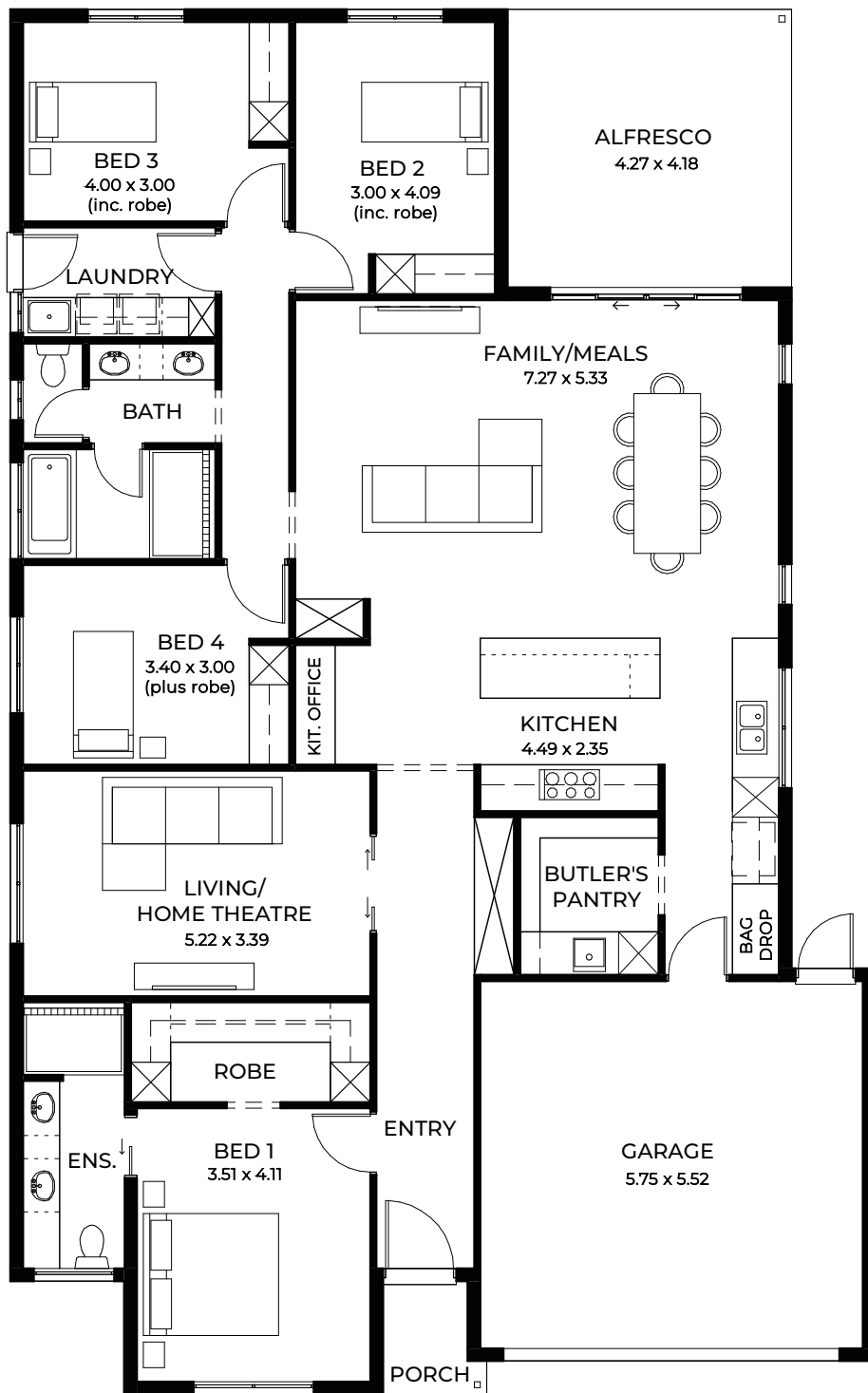
 2

With its handy garage opening straight into a butler’s pantry and bright and airy kitchen beyond, Lyra fuses functionality with style in this spacious four bedroom design. An impressive master bedroom retreat and home theatre occupy the home’s front wing.

LIVING	191.77m ²
PORCH	3.12m ²
ALFRESCO	17.85m ²
GARAGE	34.17m ²
WIDTH	13.00m (incl. garage)
DEPTH	21.47m
TOTAL	246.91m ² / 26.6 sqs

*Facade chosen may affect site coverage. These floorplans, images and facades are for illustration purposes only. All room sizes are approximate. Unauthorised use of these plans constitutes a breach of copyright which may make you personally liable for damages. The industry standard is 20% of the contract sum. E&OE BLD 8969 RLA 230557 © Statesman Homes June 2025

LYRA_5



For blocks with a 5m set back

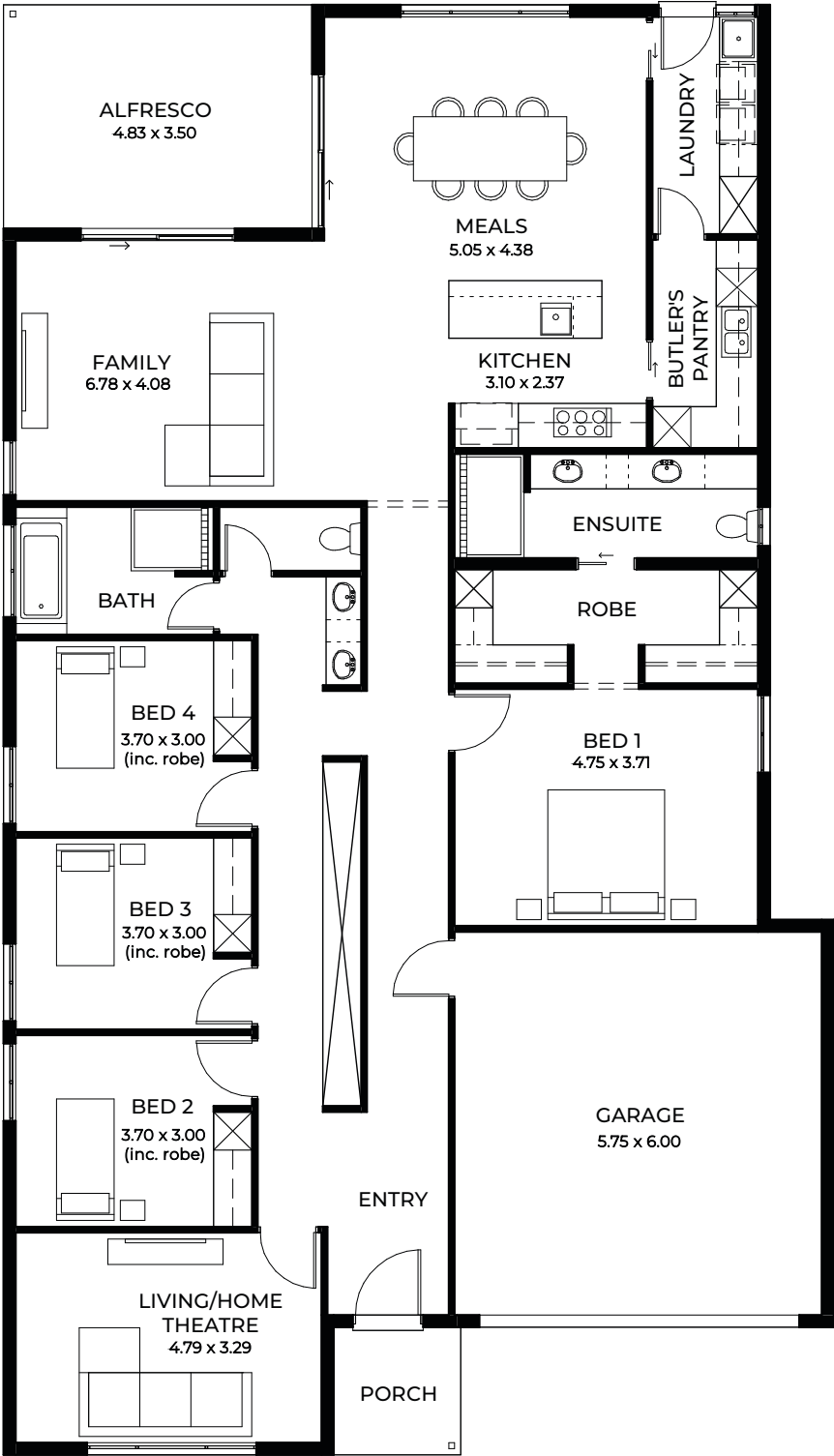


Lyra is designed with a growing or established family in mind, with its laundry and main bathroom ideally positioned close to the bedrooms. And the kitchen office is a perfect spot to Google culinary inspiration.

LIVING	191.97m ²
PORCH	2.30m ²
ALFRESCO	17.85m ²
GARAGE	34.42m ²
WIDTH	13.00m (incl. garage)
DEPTH	20.81m
TOTAL	246.54m ² / 26.5 sqs

*Facade chosen may affect site coverage. These floorplans, images and facades are for illustration purposes only. All room sizes are approximate. Unauthorised use of these plans constitutes a breach of copyright which may make you personally liable for damages. The industry standard is 20% of the contract sum. E&OE BLD 8969 RLA 230557 © Statesman Homes June 2025

ELYSIAN_3.5



For blocks with a 3.5m set back

2

4

2

2

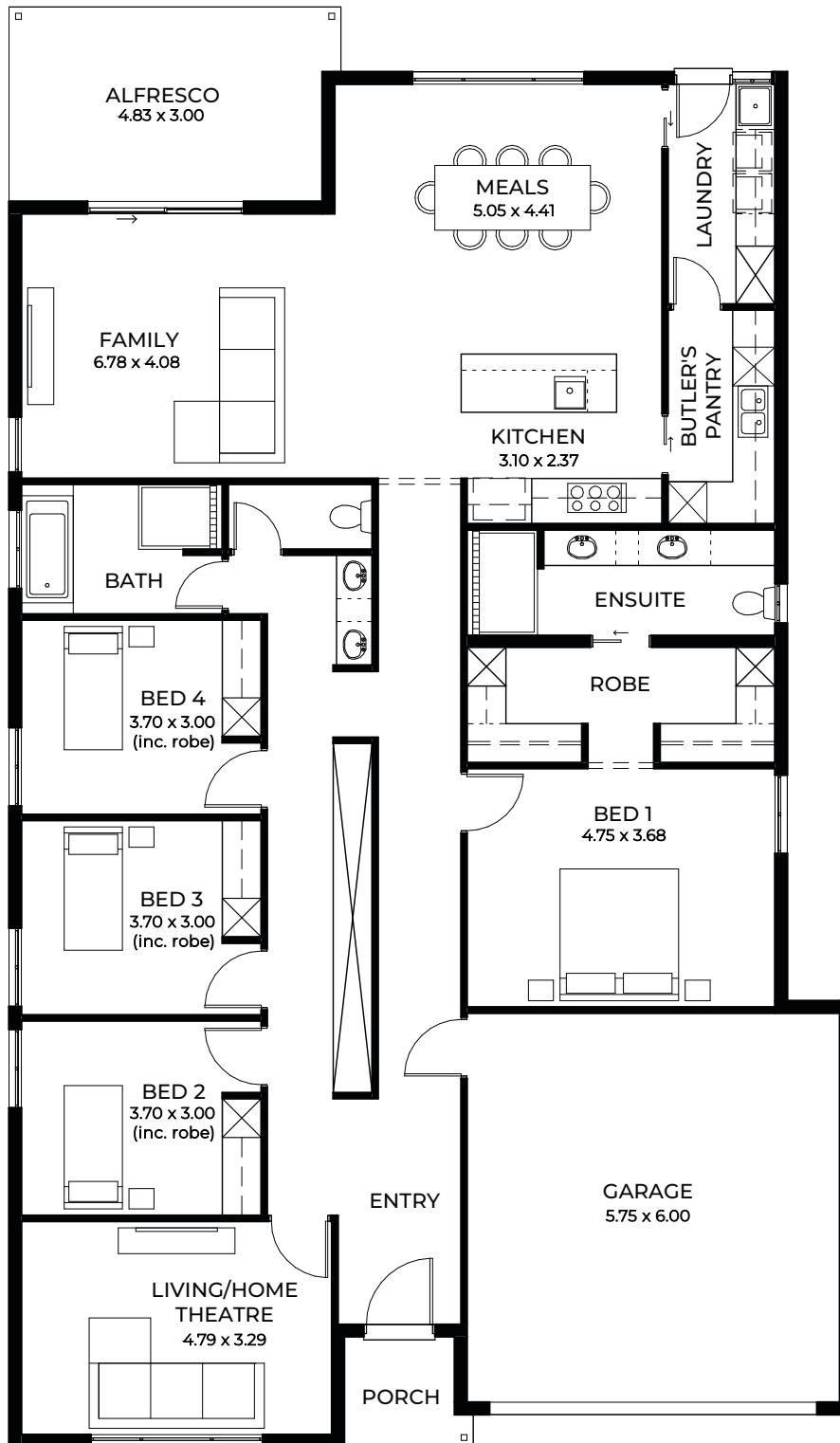
Designed by award-winning architect Francesco Bonato

The four bedroom Elysian is full of clever design ideas like a dual hallway with cupboards that cleverly separate the sleeping zones, and a designer kitchen with a large butler’s pantry that conveniently connects to a laundry pod.

LIVING	211.24m ²
PORCH	3.98m ²
ALFRESCO	16.91m ²
GARAGE	36.98m ²
WIDTH	13.00m (incl. garage)
DEPTH	22.70m
TOTAL	269.11m ² / 29 sqs

*Facade chosen may affect site coverage. These floorplans, images and facades are for illustration purposes only. All room sizes are approximate. Unauthorised use of these plans constitutes a breach of copyright which may make you personally liable for damages. The industry standard is 20% of the contract sum. E&OE BLD 8969 RLA 230557 © Statesman Homes June 2025

ELYSIAN_5



For blocks with a 5m set back



Designed by award-winning architect Francesco Bonato

A luxurious master suite with a super-sized robe and an ensuite with walk in shower, plus a large casual living area that wraps around an outdoor alfresco and a separate home theatre, makes this home a joy to live in.

LIVING	208.44m ²
PORCH	3.04m ²
ALFRESCO	14.78m ²
GARAGE	37.22m ²
WIDTH	13.00m (incl. garage)
DEPTH	22.20m
TOTAL	263.48m ² / 28.4 sqs

*Facade chosen may affect site coverage. These floorplans, images and facades are for illustration purposes only. All room sizes are approximate. Unauthorised use of these plans constitutes a breach of copyright which may make you personally liable for damages. The industry standard is 20% of the contract sum. E&OE BLD 8969 RLA 230557 © Statesman Homes June 2025

LUMO 3.5



For blocks with a 3.5m set back

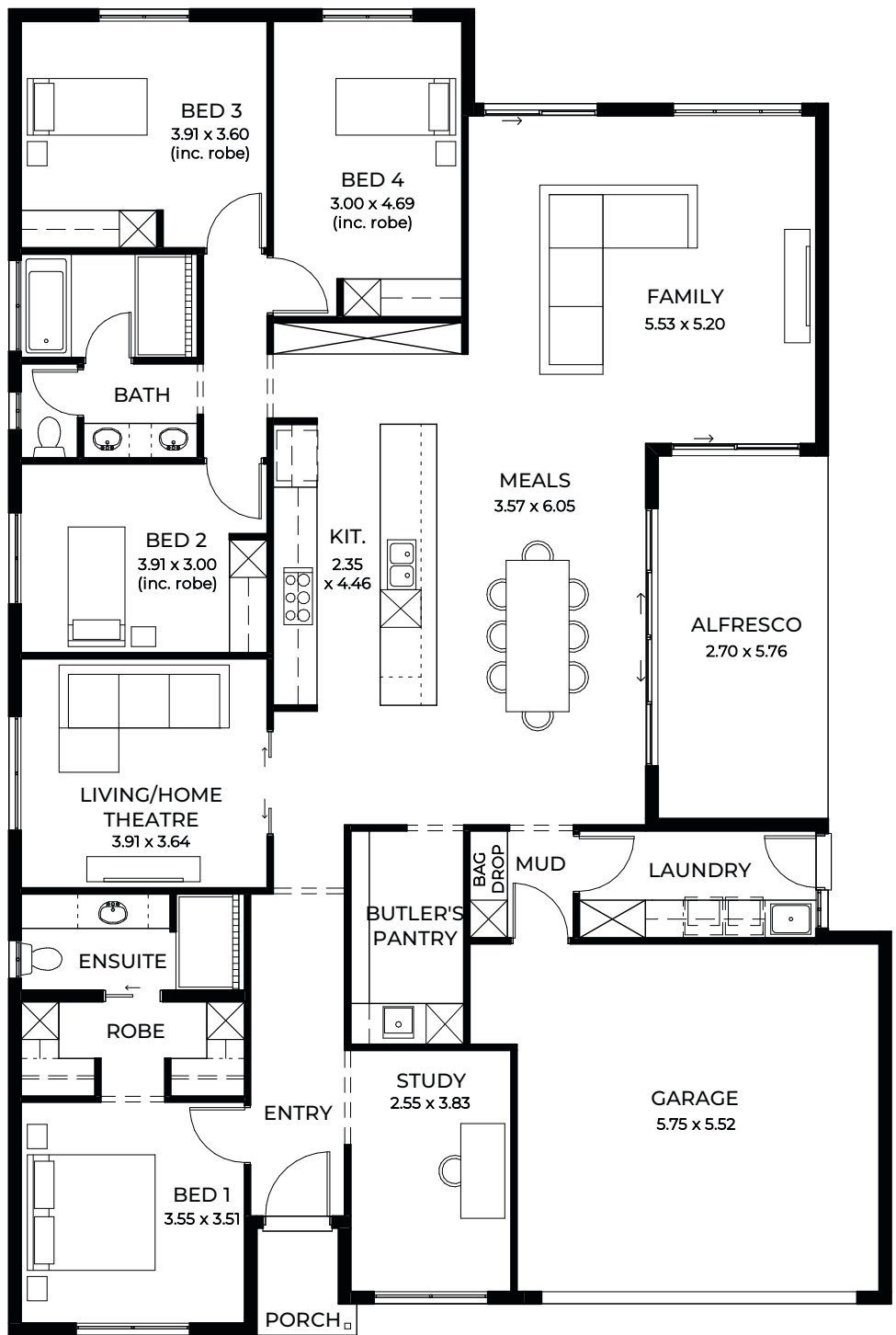
2 4 2 2

Lumo has everything you need in a modern four-bedroom family home that cleverly balances comfort, style and functionality. Sleeping zones, including the luxury master bedroom plus a study, are separated from the home theatre and central living spaces, which hug a relaxing central alfresco area.

LIVING	208.78m ²
PORCH	3.18m ²
ALFRESCO	17.28m ²
GARAGE	35.09m ²
WIDTH	14.00m (incl. garage)
DEPTH	21.03m
TOTAL	264.33m ² / 28.5 sqs

*Facade chosen may affect site coverage. These floorplans, images and facades are for illustration purposes only. All room sizes are approximate. Unauthorised use of these plans constitutes a breach of copyright which may make you personally liable for damages. The industry standard is 20% of the contract sum. E&OE BLD 8969 RLA 230557 © Statesman Homes June 2025

LUMO_5



For blocks with a 5m set back

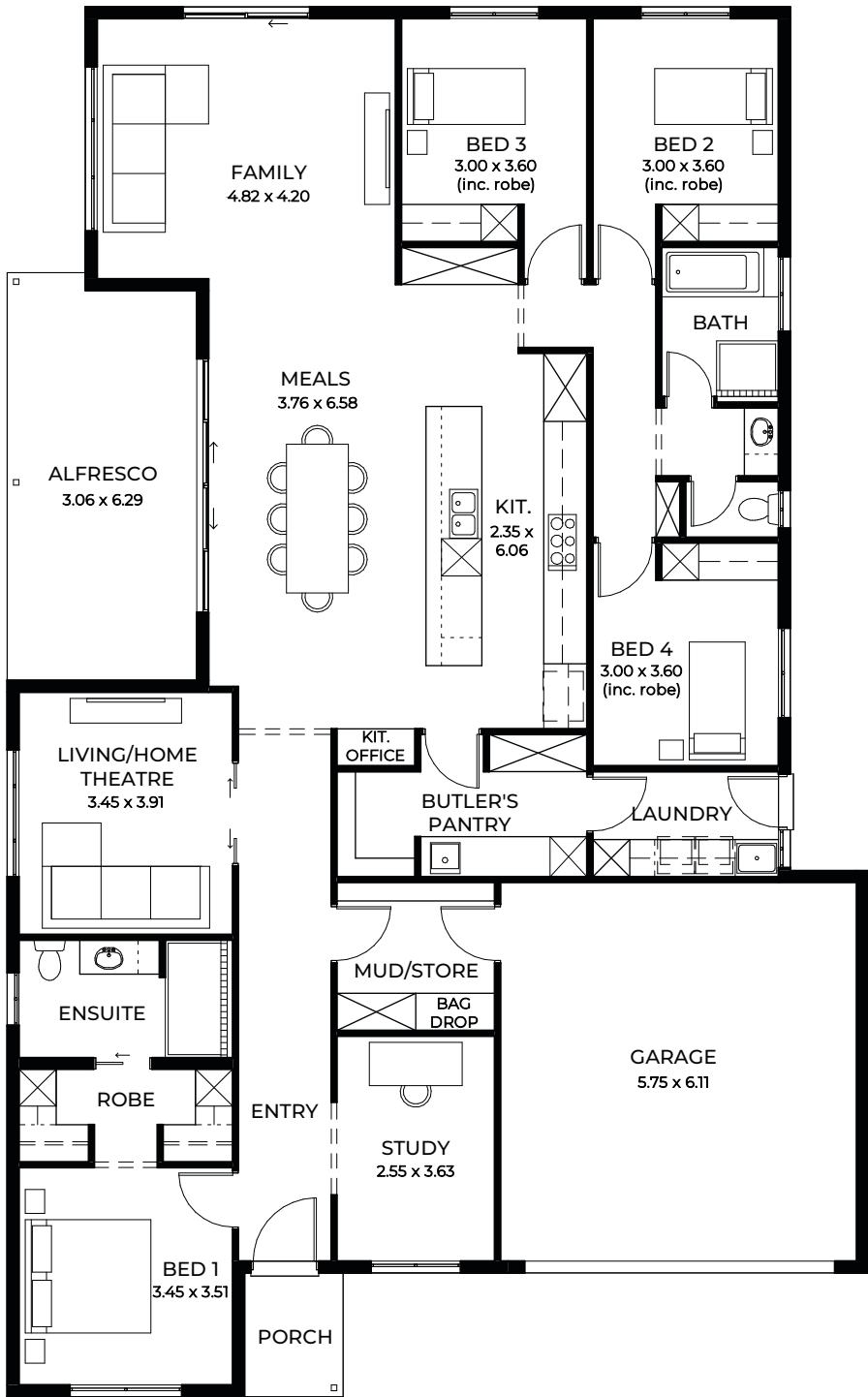


Multi-tasking is made easy in the Lumo with the laundry, a cook's delight kitchen, pantry and bath time all within close reach. Plus a study located away from household noise.

LIVING	213.95m ²
PORCH	2.29m ²
ALFRESCO	15.55m ²
GARAGE	35.33m ²
WIDTH	14.00m (incl. garage)
DEPTH	21.03m
TOTAL	267.12m ² / 28.7 sqs

*Facade chosen may affect site coverage. These floorplans, images and facades are for illustration purposes only. All room sizes are approximate. Unauthorised use of these plans constitutes a breach of copyright which may make you personally liable for damages. The industry standard is 20% of the contract sum. E&OE BLD 8969 RLA 230557 © Statesman Homes June 2025

OPAL_3.5



For blocks with a 3.5m set back

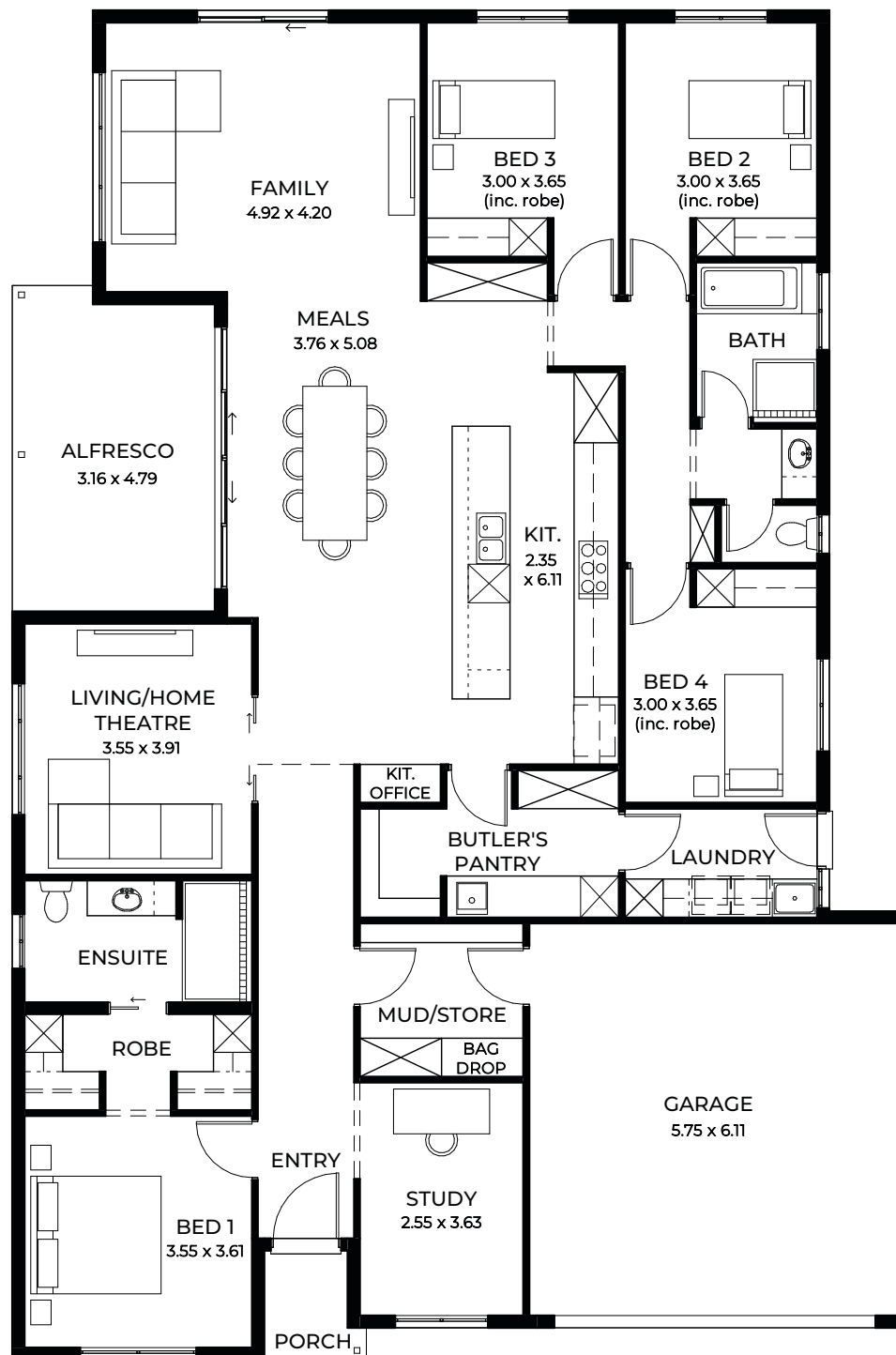
2 4 2 2

Opal sparkles with family-friendly features - garage opens to a mud room for dirty sports gear, a clever main bathroom layout is ideal for busy mornings, and multiple indoor-outdoor entertaining spaces for everyone.

LIVING	211.50m ²
PORCH	3.18m ²
ALFRESCO	19.61m ²
GARAGE	37.68m ²
WIDTH	13.90m (incl. garage)
DEPTH	22.43m
TOTAL	271.97m ² / 29.3 sqs

*Facade chosen may affect site coverage. These floorplans, images and facades are for illustration purposes only. All room sizes are approximate. Unauthorised use of these plans constitutes a breach of copyright which may make you personally liable for damages. The industry standard is 20% of the contract sum. E&OE BLD 8969 RLA 230557 © Statesman Homes June 2025

OPAL_5



For blocks with a 5m set back



There is plenty for grown-ups in the four bedroom Opal with a quiet retreat or study in its master suite zone, loads of storage in both the laundry and butler's pantry and a cook's kitchen with abundant bench space for food prep.

LIVING	211.55m ²
PORCH	2.36m ²
ALFRESCO	15.50m ²
GARAGE	37.68m ²
WIDTH	14.00m (incl. garage)
DEPTH	21.03m
TOTAL	267.09m ² / 28.7 sqs

*Facade chosen may affect site coverage. These floorplans, images and facades are for illustration purposes only. All room sizes are approximate. Unauthorised use of these plans constitutes a breach of copyright which may make you personally liable for damages. The industry standard is 20% of the contract sum. E&OE BLD 8969 RLA 230557 © Statesman Homes June 2025





DESIGNS TO SUIT

16m+ Wide Blocks

When you have space, you want to maximise it; our designs for 16m+ wide blocks are built for living large with room for all the family and more. An entertainer's dream for a free-flowing indoor-outdoor lifestyle, there are multiple living spaces, generous bedrooms, a mud room off the garage and a relaxing kitchen layout. These designs ensure your address will be home to everyone.

NIMBUS_3.5



Suits
25m deep
blocks

For blocks with a 3.5m set back

2

4

2

2

A true family home combining style and convenience. Garden windows draw natural light and ventilation into the central family living space, which flows seamlessly into the outdoor alfresco. Note the super-sized Butler’s pantry, convenient mud and storage room, and the discreetly located laundry.

LIVING	186.17m ²
PORCH	1.59m ²
ALFRESCO	13.38m ²
GARAGE	36.63m ²
WIDTH	15.00 (incl. garage)
DEPTH	18.17m
TOTAL	237.77m ² / 25.6 sqs

*Facade chosen may affect site coverage. These floorplans, images and facades are for illustration purposes only. All room sizes are approximate. Unauthorised use of these plans constitutes a breach of copyright which may make you personally liable for damages. The industry standard is 20% of the contract sum. E&OE BLD 8969 RLA 230557 © Statesman Homes June 2025

NIMBUS_5



Suits
25m deep
blocks

For blocks with a 5m set back

2

4

2

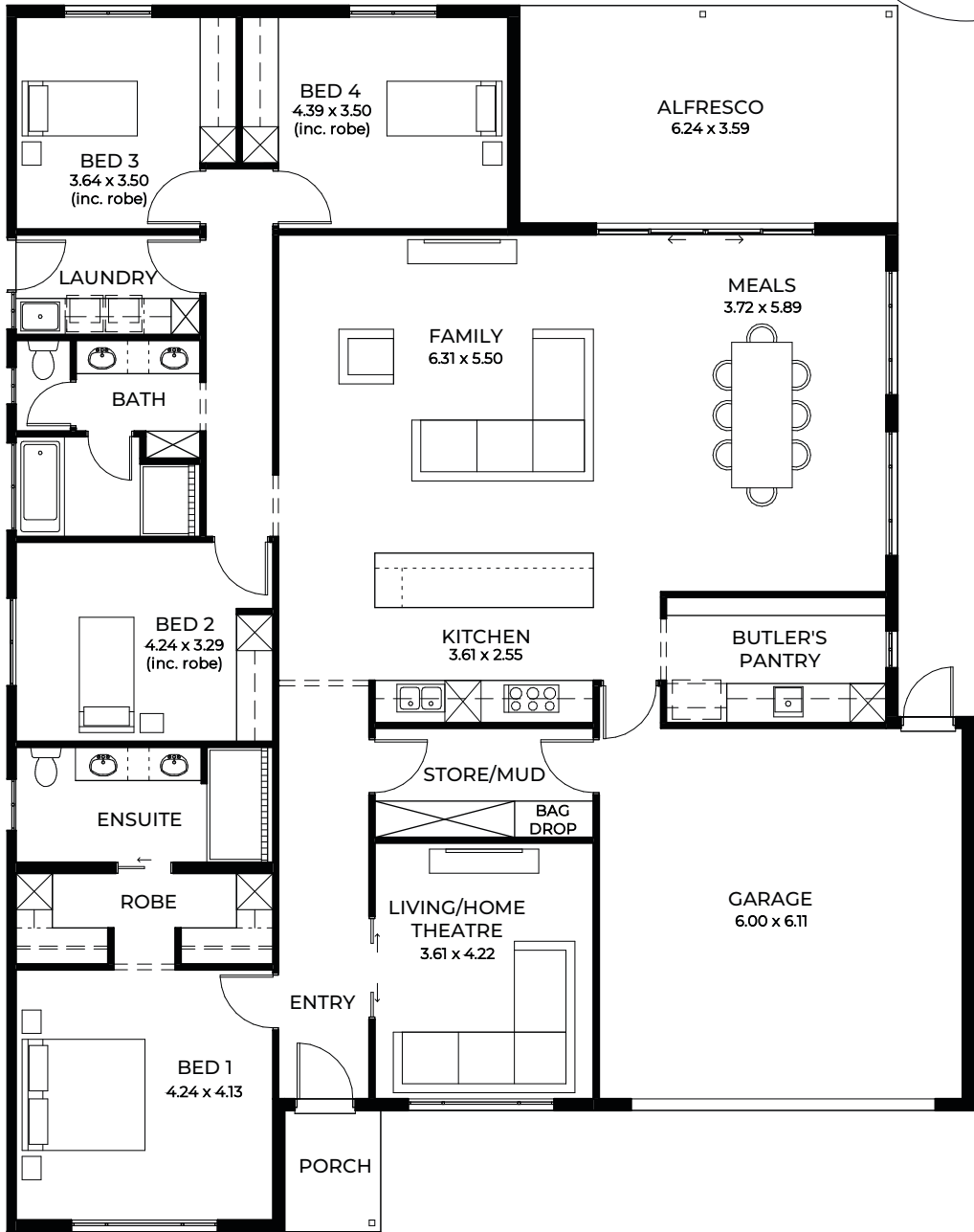
2

The master suite has all the luxury must-haves while generous-sized bedrooms with space for studying wraparound a multi-use shared bathroom. A second living room can double as a home theatre, media or games room.

LIVING	175.82m ²
PORCH	2.36m ²
ALFRESCO	10.89m ²
GARAGE	36.63m ²
WIDTH	15.00m (incl. garage)
DEPTH	16.67m
TOTAL	225.70m ² / 24.3 sqs

*Facade chosen may affect site coverage. These floorplans, images and facades are for illustration purposes only. All room sizes are approximate. Unauthorised use of these plans constitutes a breach of copyright which may make you personally liable for damages. The industry standard is 20% of the contract sum. E&OE BLD 8969 RLA 230557 © Statesman Homes June 2025

ETHEREAL_3.5



Suits
masterplanned
estates and 27m
deep blocks

For blocks with a 3.5m set back

 2

 4

 2

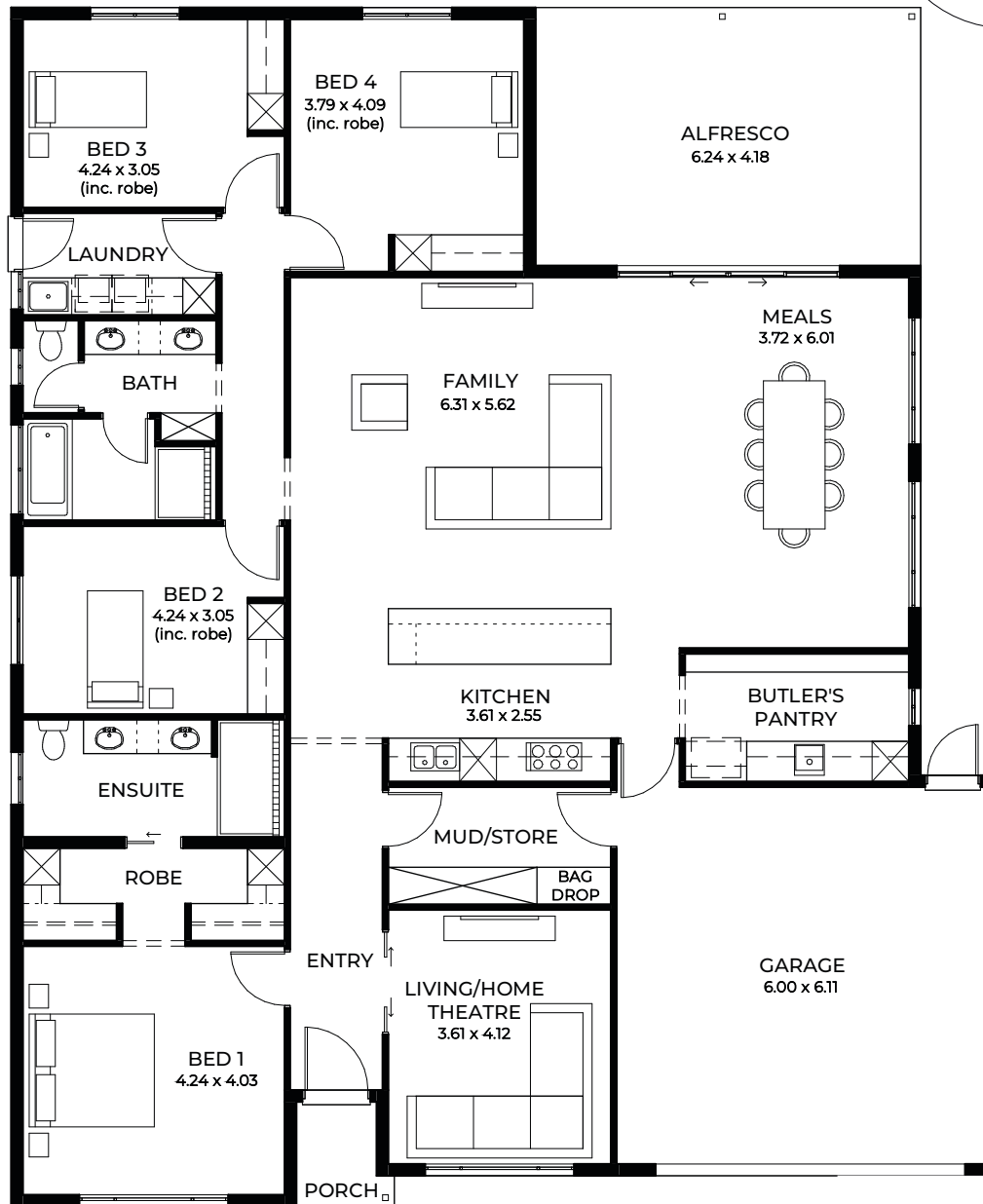
 2

Ethereal seamlessly blends contemporary function with a touch of sophistication. The sleeping and utility zones are thoughtfully arranged around the living and entertaining zones, creating an organic flow that feels just right. There's ample space for the entire family and friends.

LIVING	223.61m ²
PORCH	3.18m ²
ALFRESCO	22.40m ²
GARAGE	39.97m ²
WIDTH	16.00m (incl. garage)
DEPTH	20.22m
TOTAL	289.16m ² / 31.1 sqs

*Facade chosen may affect site coverage. These floorplans, images and facades are for illustration purposes only. All room sizes are approximate. Unauthorised use of these plans constitutes a breach of copyright which may make you personally liable for damages. The industry standard is 20% of the contract sum. E&OE BLD 8969 RLA 230557 © Statesman Homes June 2025

ETHERAL_5



For blocks with a 5m set back

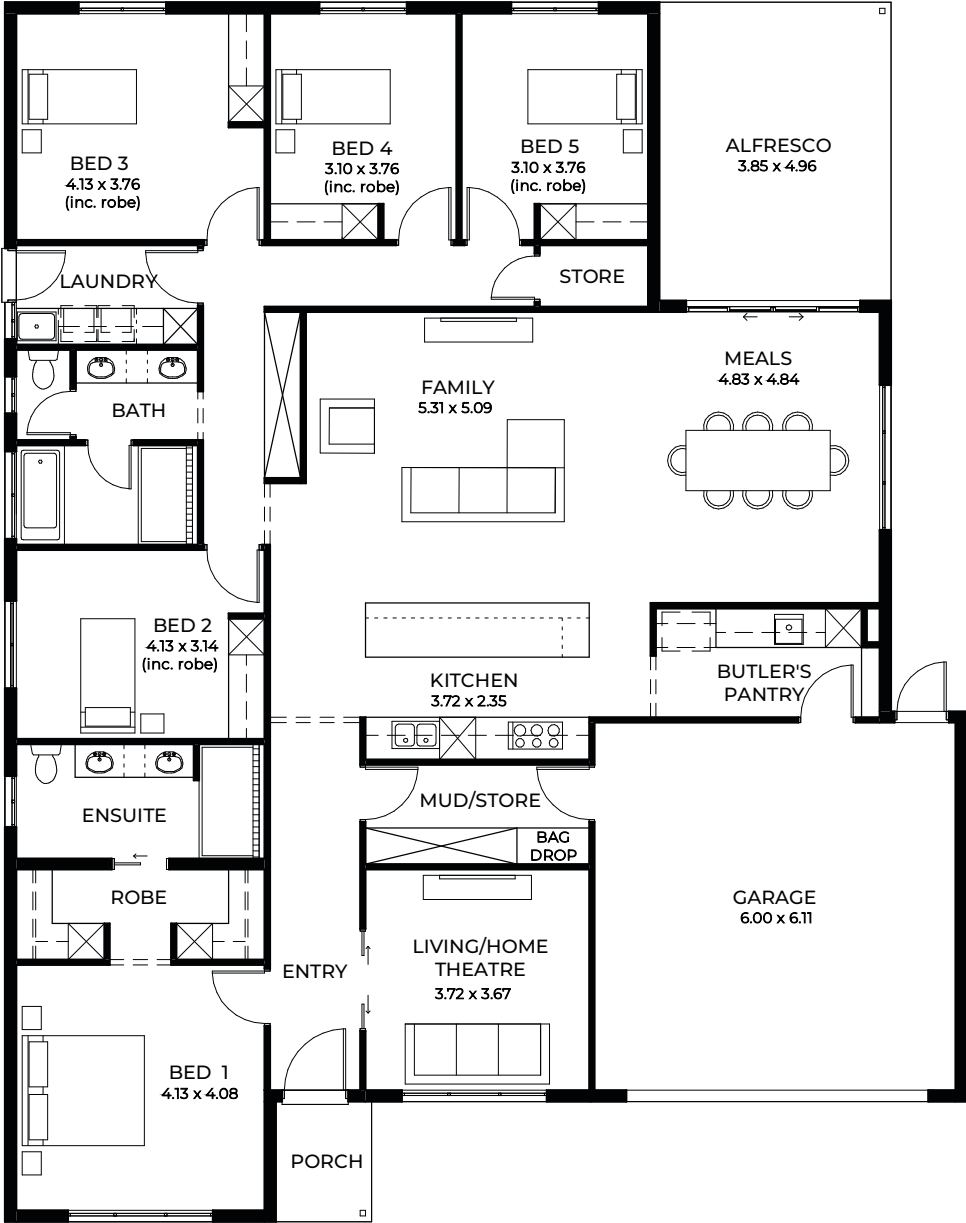


There is a luxurious-sized walk-in wardrobe, double vanities in both bathrooms and a fantastic mud and storage room with direct access from the garage.

LIVING	221.90m ²
PORCH	2.36m ²
ALFRESCO	26.08m ²
GARAGE	39.97m ²
WIDTH	16.00m (incl. garage)
DEPTH	19.43m
TOTAL	290.31m ² / 31.2 sqs

*Facade chosen may affect site coverage. These floorplans, images and facades are for illustration purposes only. All room sizes are approximate. Unauthorised use of these plans constitutes a breach of copyright which may make you personally liable for damages. The industry standard is 20% of the contract sum. E&OE BLD 8969 RLA 230557 © Statesman Homes June 2025

AZURE_3.5



For blocks with a 3.5m set back

2

5

2

2

A five bedroom beauty, Azure is for families who love to spread out. Generous-sized bedrooms, including the dreamy master suite, as well as a wow-factor home theatre.

LIVING	228.29m ²
PORCH	3.18m ²
ALFRESCO	19.10m ²
GARAGE	39.25m ²
WIDTH	16.00m (incl. garage)
DEPTH	20.28m
TOTAL	289.82m ² / 31.2 sqs

*Facade chosen may affect site coverage. These floorplans, images and facades are for illustration purposes only. All room sizes are approximate. Unauthorised use of these plans constitutes a breach of copyright which may make you personally liable for damages. The industry standard is 20% of the contract sum. E&OE BLD 8969 RLA 230557 © Statesman Homes June 2025

AZURE_5



For blocks with a 5m set back

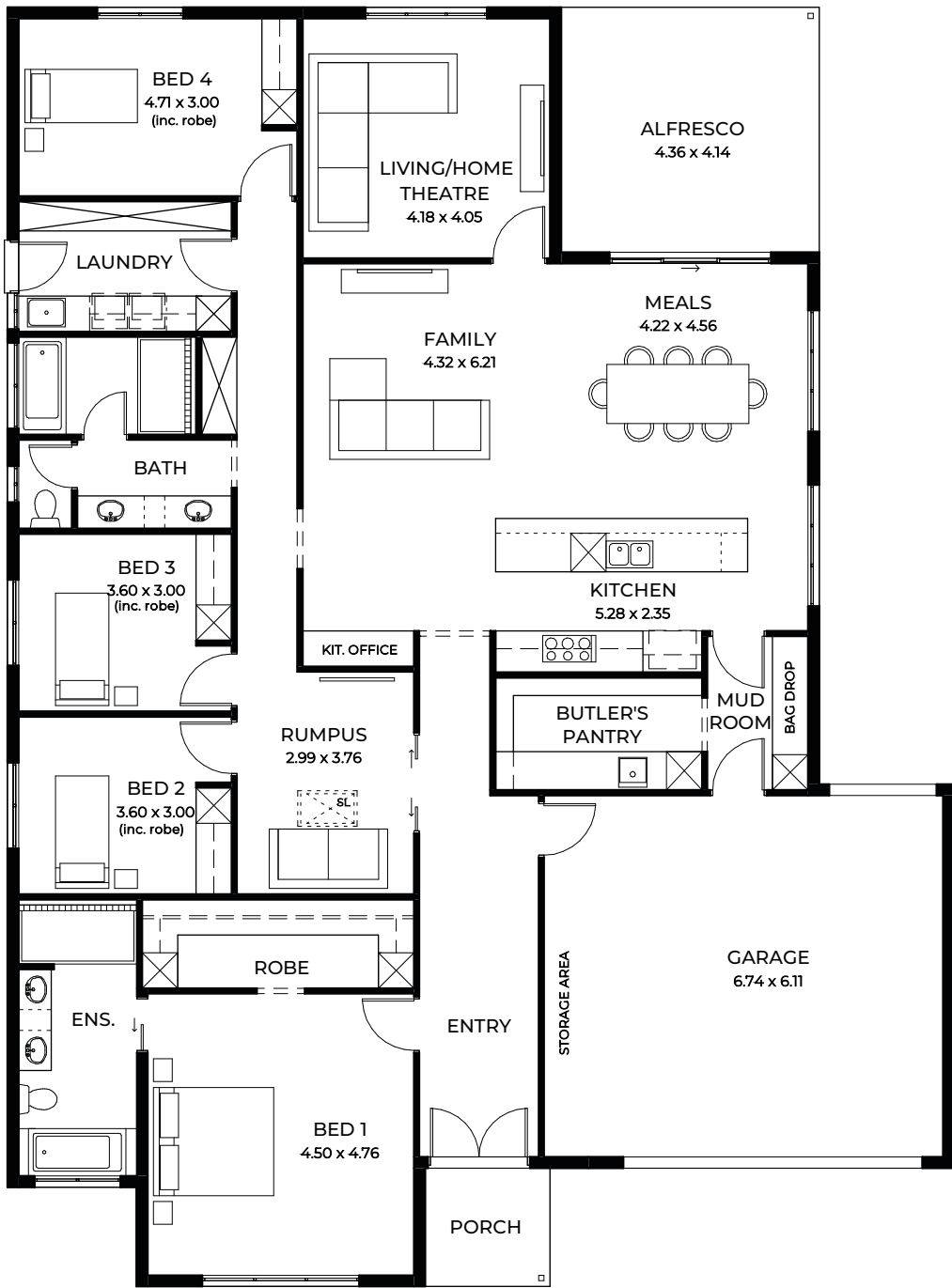


It's the extras in Azure that raise its bar: the handy mud room or storage off the garage, the extra-large butler's pantry, double vanity in the main bathroom, hallway storage and a generous laundry.

LIVING	229.46m ²
PORCH	2.36m ²
ALFRESCO	18.33m ²
GARAGE	39.97m ²
WIDTH	16.00m (incl. garage)
DEPTH	19.42m
TOTAL	290.12m ² / 31.2 sqs

*Facade chosen may affect site coverage. These floorplans, images and facades are for illustration purposes only. All room sizes are approximate. Unauthorised use of these plans constitutes a breach of copyright which may make you personally liable for damages. The industry standard is 20% of the contract sum. E&OE BLD 8969 RLA 230557 © Statesman Homes June 2025

PURA_3.5



For blocks with a 3.5m set back

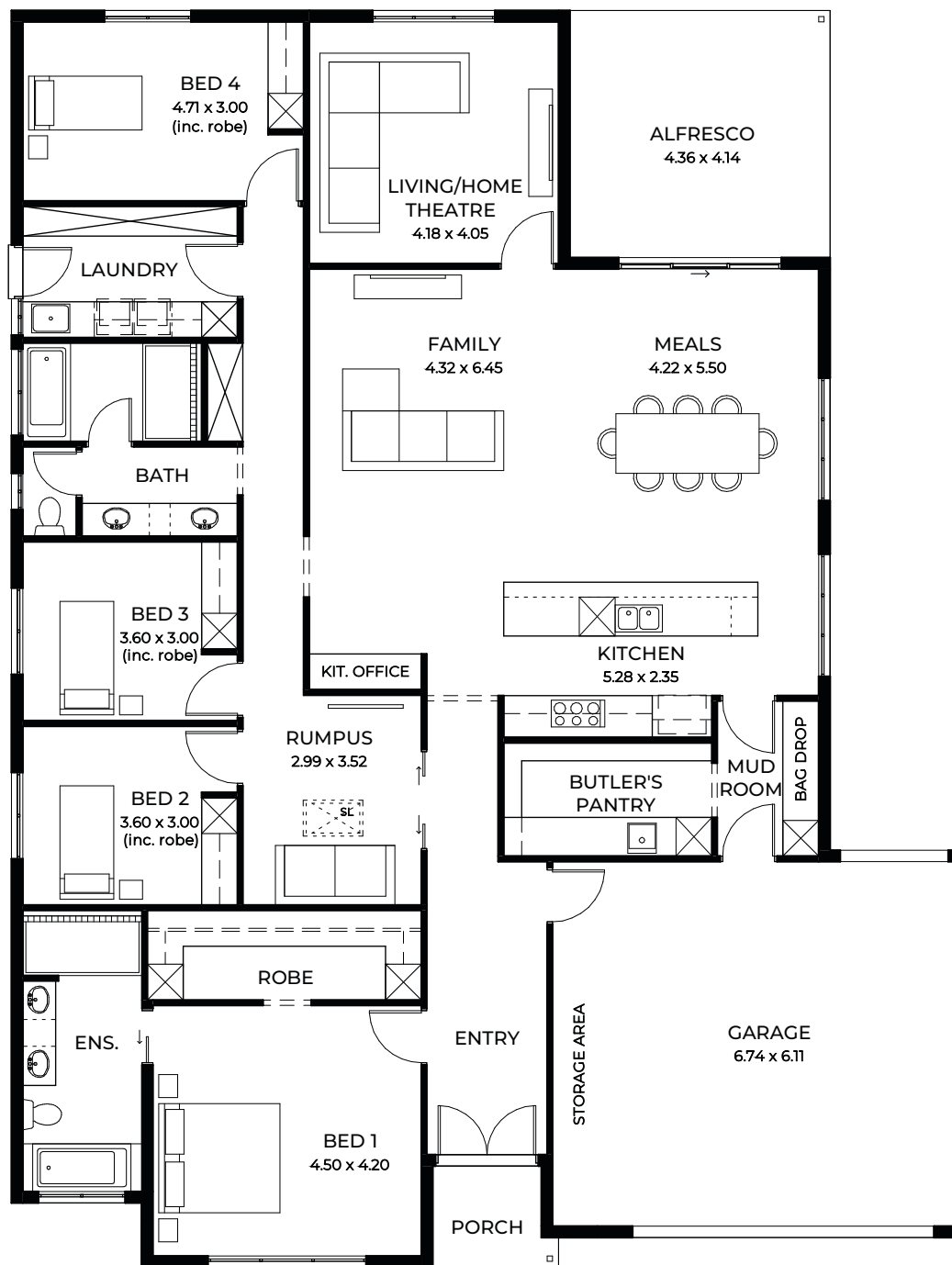


Ultimate in family living, the four-bedroom Pura has a fantastic parent's retreat with glam walk-in robe and luxurious ensuite, rumpus room in the separate bedroom wing and home theatre or second living room off the super-size casual living and designer kitchen.

LIVING	232.28m ²
PORCH	4.22m ²
ALFRESCO	18.05m ²
GARAGE	44.11m ²
WIDTH	16.00m (incl. garage)
DEPTH	21.62m
TOTAL	298.66m ² / 32.1sqs

*Facade chosen may affect site coverage. These floorplans, images and facades are for illustration purposes only. All room sizes are approximate. Unauthorised use of these plans constitutes a breach of copyright which may make you personally liable for damages. The industry standard is 20% of the contract sum. E&OE BLD 8969 RLA 230557 © Statesman Homes June 2025

PURA_5



For blocks with a 5m set back



Style meets functionality with clever storage included in the double garage - which opens into the super-size butler's pantry and mud room - and the all-important laundry. Baths in both bathrooms, and central picture windows bringing beautiful light and ventilation.

LIVING	233.47m ²
PORCH	3.24m ²
ALFRESCO	18.05m ²
GARAGE	44.36m ²
WIDTH	16.00m (incl. garage)
DEPTH	21.06m
TOTAL	299.12m ² / 32.1 sqs

*Facade chosen may affect site coverage. These floorplans, images and facades are for illustration purposes only. All room sizes are approximate. Unauthorised use of these plans constitutes a breach of copyright which may make you personally liable for damages. The industry standard is 20% of the contract sum. E&OE BLD 8969 RLA 230557 © Statesman Homes June 2025

DESIGNS TO SUIT

Extra Wide Blocks

Large acreage-style blocks are usually narrow, requiring a thoughtful balance to achieve a free-flowing design with every feature and convenience that takes advantage of its setting and views or maximises the home’s street appeal. A spacious, open-plan living hub with a super-size home theatre or teen retreat, alfresco area and kitchen fit for a master chef sits at the heart of Halo.



 2

 5

 2.5

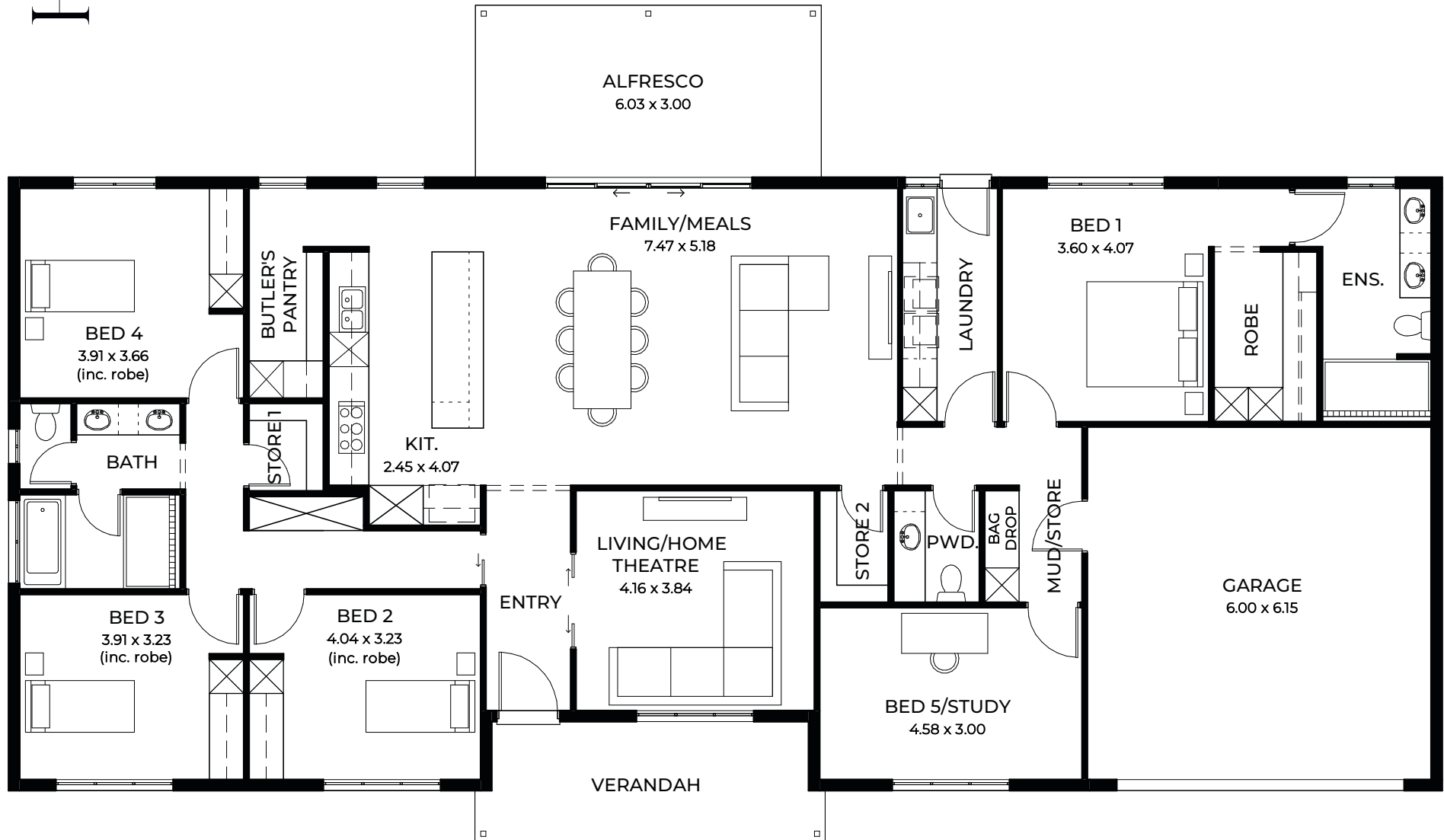
 2

Surrounding the impressive entertaining space are the luxurious master suite plus three bedrooms with robes and extra hallway storage, spacious main bathroom plus extra powder room and a garage conveniently opening into the mud room.

LIVING	221.37m ²
VERANDAH	12.14m ²
ALFRESCO	18.09m ²
GARAGE	39.24m ²
WIDTH	25.00m (incl. garage)
DEPTH	14.59m
TOTAL	290.84m ² / 31.3 sqs

*Facade chosen may affect site coverage. These floorplans, images and facades are for illustration purposes only. All room sizes are approximate. Unauthorised use of these plans constitutes a breach of copyright which may make you personally liable for damages. The industry standard is 20% of the contract sum. E&OE BLD 8969 RLA 230557 © Statesman Homes June 2025

HALO







The Horizon Elevation Collection

It's the last thing you see when you head off to work, and it welcomes you home after a long day. The right exterior elevation sets the tone for the rest of your house - inside and out - and creates a picture of how you live.

With six architecturally designed elevations to select from, each includes statement windows, auto remote-controlled panel-lift garage doors and a mix of colours and materials that will truly complement the interior and deliver maximum street appeal.

ELEVATIONS TO SUIT NARROW BLOCKS

Elevations to suit narrow blocks



ELEVATIONS TO SUIT WIDER BLOCKS



ELEVATIONS TO SUIT WIDER BLOCKS

Elevations to suit wide blocks



ELEVATIONS TO SUIT WIDER BLOCKS







View our Home Designs

Scan the QR code below to explore the full range of designs and elevations. Each floorplan is meticulously designed down to the last centimetre, tailored to maximise the way Australians love to live. From spacious open-plan living to seamless integration with outdoor spaces, our homes are thoughtfully designed for modern lifestyles. With timeless finishes that exude elegance while embracing current styling trends, every detail reflects the perfect balance of sophistication and functionality. Embark on the path to your new home with confidence, knowing that every choice has been made to elevate your living experience.



Display Homes

Our stunning Statesman Homes displays serve as the ideal destination for discovering the information and inspiration essential to creating a home you will truly cherish. Immerse yourself in the elegance and craftsmanship of our designs, and explore the possibilities for your future home.

Simply scan the QR code to find a display location near you.



STATESMAN
HOMES

To learn more contact us on **8366 0080**
or visit **statesman-homes.com.au**

Every reasonable effort has been made to ensure that all information provided in this magazine is correct at the time of printing. All floorplans, images and facades are for illustration purposes only. Some images may contain upgrade or discontinued items and may not represent standard specifications or inclusions. The information provided in this magazine is to be used as a guide only and Statesman Homes makes no warranties about the accuracy or completeness of the information. This magazine has been prepared for general information purposes only and you should not rely on it for the purposes of making a decision about entering into a contract for the construction of a home or the purchase of land. E&OE BLD 8969 RLA 230557 © Statesman Homes June 2025